



Flexible storage series with great opportunities to adapted to everyday needs. Doors with seamless fronts in MDF as standard, choose your preferred NCS colour after taste and preferences. The frames are also available in any NCS colour. Choose between different frame and door heights. Cabinet doors are available with different types of locks and closures. It is also possible to have doors with mail-inlets.

Complete with cover panels and work tops, especially when placed back to back. See also other modules in the same series, bench, shoe shelves and open storage in lacquered MDF. As accessories there are removable shelves, clothes rails, mirrors, hook, carpet, cork box Stuff and the Office Bag.

This storage series can be customised.

Discover the entire series within Space, which consists of storage cabinets, storage lockers, benches, seating modules, shoe shelves, drawers, wardrobes and modules with recessed electricity.

Locks and closing

We offer different types of locks and closings for doors, such as electronic RFID locks, code locks, cabinet locks, padlock fittings and push-to-open.

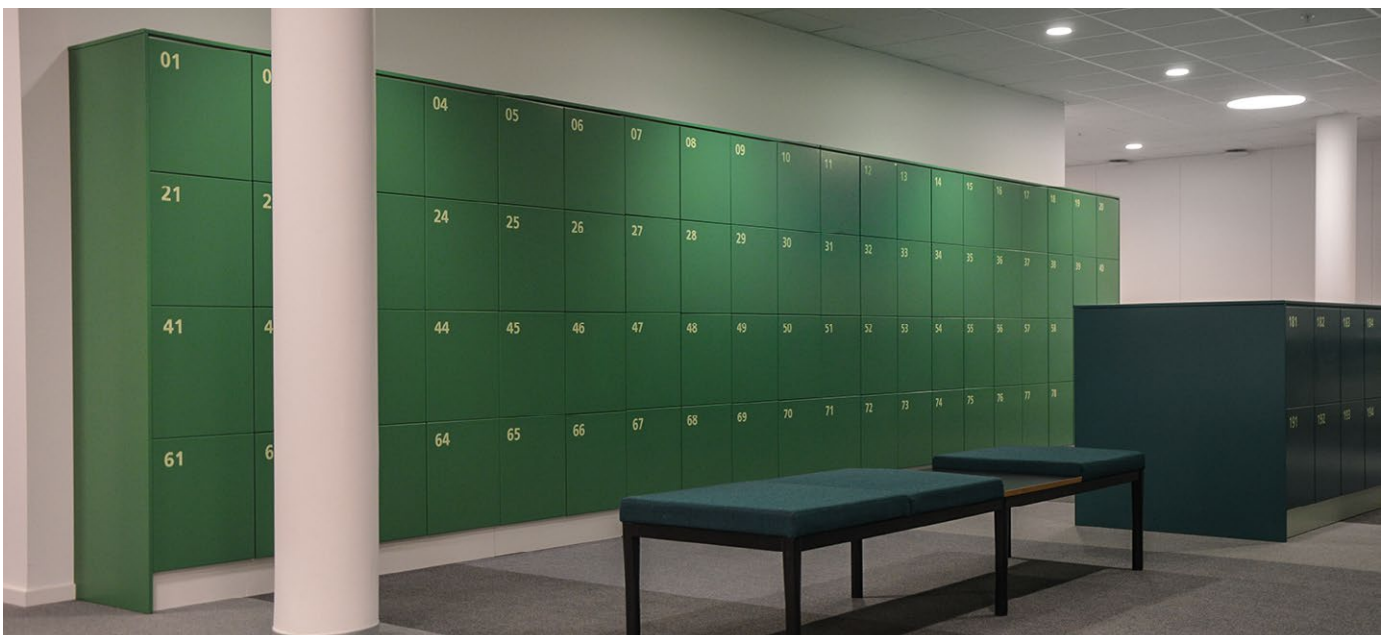
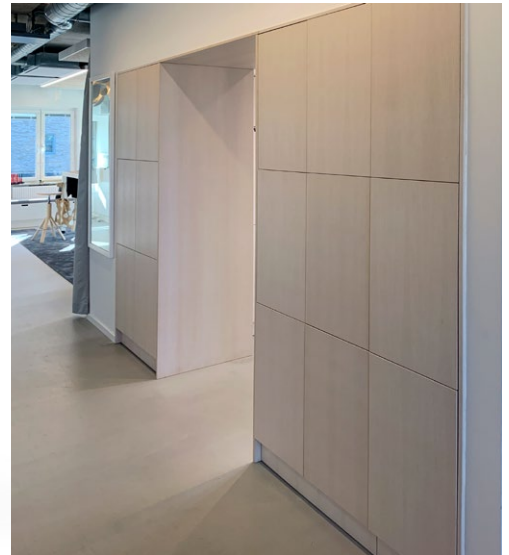
For network-based locks, contact TreCe for individual advice.

Accessories

For Space storage lockers/units there are accessories such as removable shelves, clothes rail, mirror, hook, carpet, cork box Stuff and Office products. Integrated electricity for charging computers/mobile phones is also available as an option.

Dimensions: Width x Height (incl. plinth). x Depth. **Frame and front:** 16 mm. **Plinth:** 143 mm.
All doors are right-hung as standard.

Reference images of both standard and customised Space



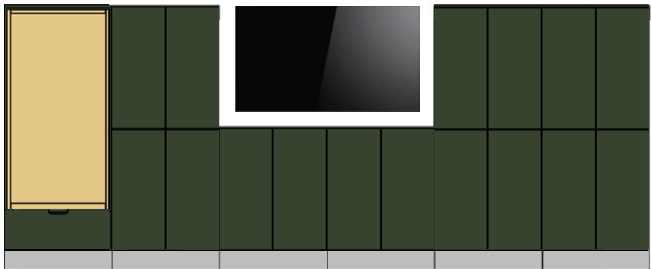
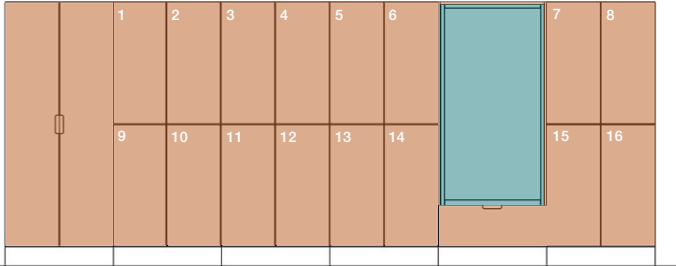
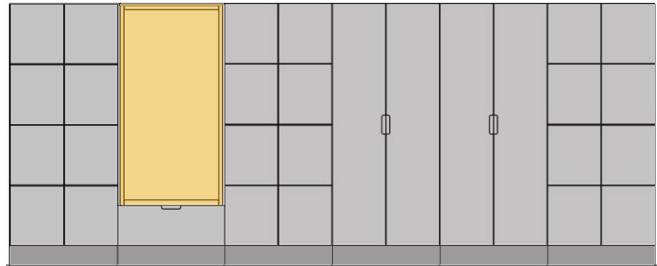
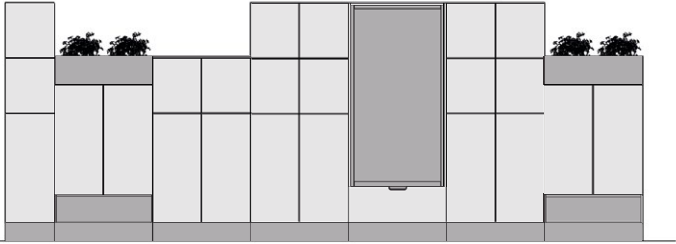
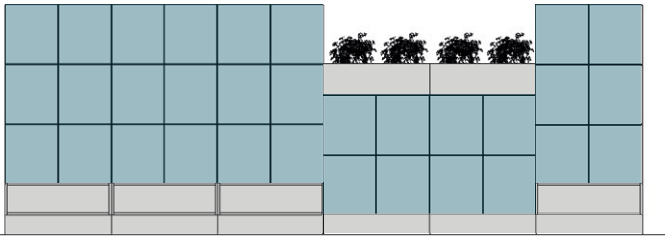
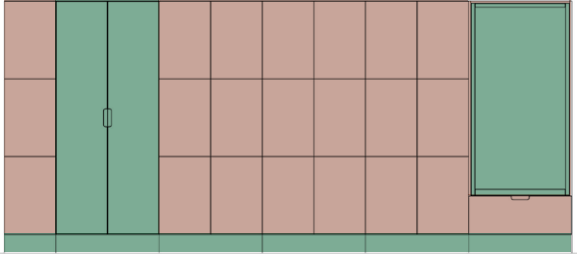
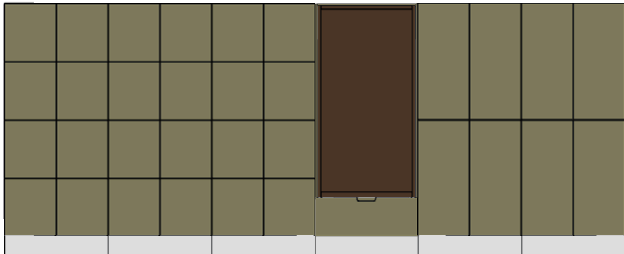
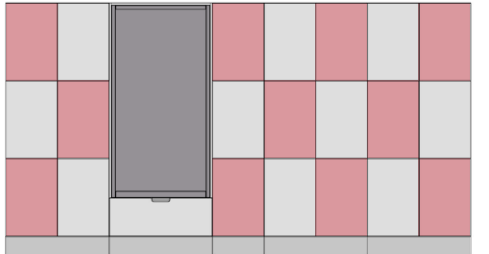
Dimensions: Width x Height (incl. plinth). x Depth. **Frame and front:** 16 mm. **Plinth:** 143 mm.
All doors are right-hung as standard.

Reference images of both standard and customised Space



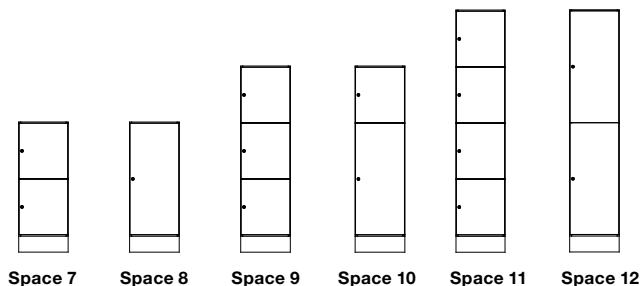
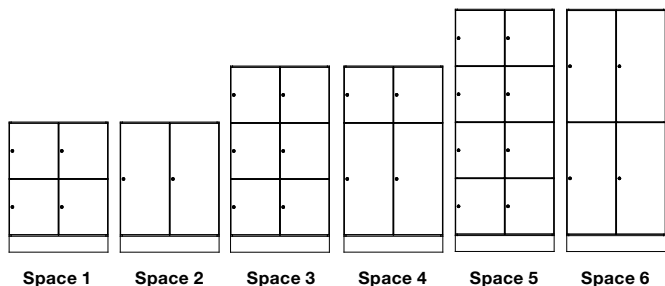
Dimensions: Width x Height (incl. plinth). x Depth. **Frame and front:** 16 mm. **Plinth:** 143 mm.
All doors are right-hung as standard.

Space Combinations



Dimensions: Width x Height (incl. plinth). x Depth. **Frame and front:** 16 mm. **Plinth:** 143 mm.
All doors are right-hung as standard.

Space personal storage



Finished modules – model double including cabinet locks

Inside dimensions/locker: Space door/locker low 363x424x454 mm.
Inside dimensions/locker: Space door/locker high 363x864x454 mm.
Cabinet locks included in the finished modules, incl. 2 keys.
Frame, plinth and divider in white MFC laminate, 16 mm with 0,8 mm straight ABS-lipping.
Fronts in 16 mm MDF, NCS S 0500-N, white.

Name, finished modules	Size	White
Space 1 double low, 4 door low	790x1039x470	208111
Space 2 double low, 2 door high	790x1039x470	208112
Space 3 double middle, 6 door low	790x1487x470	208113
Space 4 double middle, 2 door low + 2 door high	790x1487x470	208114
Space 5 double high, 8 door low	790x1936x470	208115
Space 6 double high, 4 door high	790x1936x470	208116

Finished modules – model single including cabinet lock

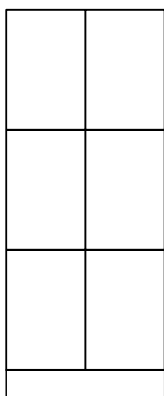
Inside dimensions/locker: Space door/locker low 363x424x454 mm.
Inside dimensions/locker: Space door/locker high 363x864x454 mm.
Cabinet locks included in the finished modules, incl. 2 keys.
Frame, plinth, back and divider in white MFC laminate, 16 mm with 0,8 mm straight ABS-lipping.
Fronts in 16 mm MDF, NCS S 0500-N, white.

Name, finished modules	Size	White
Space 7 single low, 2 door low	395x1039x470	208117
Space 8 single low, 1 door high	395x1039x470	208118
Space 9 single middle, 3 door low	395x1487x470	208119
Space 10 single middle, 1 door low+1 door high	395x1487x470	208120
Space 11 single high, 4 door low	395x1936x470	208121
Space 12 single high, 2 door high	395x1936x470	208122

Internal dimensions/locker, Space door middle: W363xH573xD454 mm.



Space 13
Space frame single high/3 with fixed shelves and Space door middle.



Space 14
Space frame double high/3 with fixed shelves and Space door middle.

Space personal storage has been expanded by an additional door height, which we have chosen to name “middle”. This door size only fits Space frame high/3, which like the other units is available in a single and double version. Space door middle is available with several different lock types and can be fitted with a letterbox. Internal dimensions/locker: Space door middle: W363xH573xD454 mm.

Dimensions: Width x Height (incl. plinth). x Depth. **Frame and front:** 16 mm. **Plinth:** 143 mm.
All doors are right-hung as standard. .

Frames double single with divider

Name	Size	White	NCS
Space Frame single low	395x1039x470	201108	201118
Space Frame single middle	395x1487x470	201109	201119
Space Frame single high	395x1936x470	201110	201120
Space Frame double low	790x1039x470	201111	201121
Space Frame double middle	790x1487x470	201112	201122
Space Frame double high	790x1936x470	201113	201123
Space frame single high/3*	395x1936x470	201124	201125
Space frame double high/3*	790x1936x470	201126	201127

White: MFC laminate. **NCS:** Lacquer any NCS.

Clothes rail included in Space frame wardrobe, double doors ordered separately. Klädstång ingår i klädsåp, pardörrar tillkommer.

* Module adapted for Space door middle, 3 doors in height. Suitable for Space 13 and 14.

Shelves

Name	Size	White	NCS
Space shelf single fixed between lockers	363x16x451	205009	205019
Space shelf single movable*	363x16x385	205010	205020
Space shelf double fixed between lockers	371x16x451	205011	205021
Space shelf double movable*	371x16x385	205012	205022

White: MFC laminate. **NCS:** Lacquer any NCS.
*Indrawn front.



Doors wardrobes

Name	Size	NCS
Space door wardrobe low, cabinet lock	393x1342x16	204061
Space door wardrobe low, RFID excl. lock*	393x1342x16	204062
Space door wardrobe low, cabinet lock +mail	393x1342x16	204063
Space door wardrobe low, padlock fitting*	393x1342x16	204064
Space door wardrobe low, RFID excl. lock +mail*	393x1342x16	204065
Space door wardrobe low, push open	393x1342x16	204066
Space door wardrobe high, cabinet lock	393x1790x16	204051
Space door wardrobe high, RFID excl. lock*	393x1790x16	204052
Space door wardrobe high, padlock fitting**	393x1790x16	204054
Space door wardrobe high, push open	393x1790x16	204056

NCS: Lacquered MDF, any NCS

Detail images of locks see page 9.

** Padlocks and RFID locks are ordered separately Contact TreCe.

*** Inlet: W:270 x H:125 mm. Cover plate inside door, lacquered in RAL 9016 white.

Contact TreCe if you want numbering on doors.

Doors

Inside dimensions/locker, Space door/locker low: W363xH424xD454 mm.

Inside dimensions/locker, Space door/locker middle: W363xH573xD454mm.

Inside dimensions/locker, Space door/locker high: W363xH864xD454 mm.

Name	Size	NCS
Space door low, cabinet lock	393x446x16	202121
Space door low, RFID*	393x446x16	202122
Space door low, lock+mail	393x446x16	202123
Space door low, padlock fitting*	393x446x16	202124
Space door low, RFID+mail*	393x446x16	202125
Space door low, push open	393x446x16	202126
Space door high, cabinet lock	393x595x16	202141
Space door high, RFID*	393x595x16	202142
Space door high, lock+mail	393x595x16	202143
Space door high, padlock fitting*	393x595x16	202144
Space door high, RFID+mail*	393x595x16	202145
Space door high, push open	393x595x16	202146
Space door high, cabinet lock	393x894x16	203121
Space door high, RFID excl. lock**	393x894x16	203122
Space door high, cabinet lock + mail	393x894x16	203123
Space door high, padlock fitting**	393x894x16	203124
Space door high, RFID excl. lock+mail**	393x894x16	203125
Space door high, push open	393x894x16	203126
Space door high, with inlet***	392x894x16	203129

NCS: Lacquered MDF, any NCS

Detail images of locks see page 9.

** Padlocks and RFID locks are ordered separately Contact TreCe.

*** Inlet: W:270 x H:125 mm.

Cover plate inside door, lacquered in RAL 9016 white.

Contact TreCe if you want numbering on doors.



Mailbox in metal is powder coated as standard, RAL 9016 white. It can be painted in any RAL colour at an additional cost.

Drawer/Hatch

Name	Size	NCS
Space drawer, 100% expansion, 35 kg, RFID* (with high sides)	392x446x450	208060
Space drawer, 100% expansion, 35 kg, RFID* (with low sides)	392x446x450	208061

NCS: Lacquered MDF, any NCS.

* RFID locks will be added separately.



Space drawer, high sides.

Dimensions: Width x Height (incl. plinth). x Depth. **Frame and front:** 16 mm. **Plinth:** 143 mm.

All doors are right-hung as standard.

NCS refers to product lacquered in one optional NCS colour.

Shared storage

Name	Size	White	NCS
Space frame wardrobe Clothes rail included	790x1936x470	204110	204120
Space double door wardrobe*	786x1790x16		204140
Space shelf wardrobe, fixed	755x19x455	205031	205041

* Milled metal handle, powder coated in RAL 9016 white as standard.

Can be lacquered in any RAL colour at an additional cost.

White: White direct laminate **NCS:** Lacquered MDF, any NCS

Open shelf/bench



Name	Size	NCS
Space open shelf/bench, single	395x298x487	208092
Space open shelf/bench, double	790x298x487	208091
Space shelf movable, single	363x16x469	205052
Space shelf movable, double	758x16x469	205051

Aligned with fronts. **NCS:** Lacquered MDF, any NCS

Seat height 441 mm, incl. plinth.

Cushions and fabric are ordered separately, contact TreCe.

Shoe shelf



Name	Size	NCS
Space open shoe shelf, single	395x232x487	207092
Space open shoe shelf, double	790x232x487	207091

Aligned with fronts. **NCS:** Lacquered MDF, any NCS.

Carpets, see accessories page 9.

Plinth

Name	Size	White	NCS
Space plinth, single	395x143x430	208072	208082
Space plinth, double	790x143x430	208071	208081

White: MFC laminate. **NCS:** Lacquer any NCS.

Storage box open/Flower box

Name	Size	Art no.
Space storage box open single	395x232x487	209093
Space storage box open double	790x232x487	209091
Space storage box open single, back to back	395x232x976	209092
Plastic box 19L, for plants	446x190x354	209099

Aligned with fronts. **NCS:** Lacquered MDF, any NCS.

The unit is not water resistant.



Space seating module

Name	Size	White	NCS
Space seating module with flap doordownward opening, milled handle, gas springs	790x1936x470	214130	214040
Space seating module with drawer 100% extension, 35kg, push open fittings (high side railing)	790x1936x470	214131	214141

NCS: Lacquered MDF optional NCS.

Seat height 441 mm

Cushions and fabric are additional, contact TreCe.



Space seating module flap door



Flap door

Drawer - Wardrobe/seat module

Name	Size	NCS
Space drawer wardrobe, w. railing 100%, push open (alternative to Flap door)	788x296x16	204072
Space wardrobe drawer, high side 100%, push open (alternative to Flap door)	788x296x16	204073

NCS: Lacquered MDF optional NCS.

* RFID lock is additional, ordered separately.



Plastic box: Fits two in Space box open/flower box.



Space drawer wardrobe, w. railing 100%, push open

Dimensions: Width x Height (incl. plinth). x Depth. **Frame and front:** 16 mm. **Plinth:** 143 mm.
All doors are right-hung as standard. .



Leg stand



Name	Colour	Size	Art no.
Space double leg stand	RAL 9010	789x143x469	209101
Space double leg stand	RAL 7032	789x143x469	209102
Space double leg stand	RAL 7016	789x143x469	209103
Space double leg stand	RAL 5023	789x143x469	209104
Space double leg stand	RAL 1013	789x143x469	209105
Space double leg stand	RAL 6013	789x143x469	209106
Space double leg stand	RAL 6020	789x143x469	209107
Space double leg stand	RAL 8014	789x143x469	209108
Space double leg stand	RAL 1017	789x143x469	209109
Space double leg stand	RAL 3014	789x143x469	209110
Space double leg stand	RAL 3005	789x143x469	209111
Space triple leg stand	RAL 9010	1184x143x469	209121
Space triple leg stand	RAL 7032	1184x143x469	209122
Space triple leg stand	RAL 7016	1184x143x469	209123
Space triple leg stand	RAL 5023	1184x143x469	209124
Space triple leg stand	RAL 1013	1184x143x469	209125
Space triple leg stand	RAL 6013	1184x143x469	209126
Space triple leg stand	RAL 6020	1184x143x469	209127
Space triple leg stand	RAL 8014	1184x143x469	209128
Space triple leg stand	RAL 1017	1184x143x469	209129
Space triple leg stand	RAL 3014	1184x143x469	209130
Space triple leg stand	RAL 3005	1184x143x469	209131

Space double leg stand: Steel leg stand with adjustable feet, 4 legs. Fits Space double frame. Delivered not fitted to cabinet, leg stand must be adjusted in height before cabinet is lifted on.

Space triple leg stand: Steel leg stand with adjustable feet, 5 legs (1 support leg in the middle). Fits 1x Space double frame + 1x Space single frame. Delivered not fitted to cabinet, leg stand must be adjusted in height before cabinet is lifted on.

Top cover

Name	Size	Thickness	NCS
Space top cover panel single	490	16	207021
When placing modules back to back			
Space top cover panel double	980	16	207022

NCS: Lacquered MDF, any NCS.

Cover panels

Name	Size	NCS
<i>For frames personal storage</i>		
Space cover panel single, low	490x1039x16	206021
Space cover panel single, middle	490x1487x16	206022
Space cover panel single, high	490x1936x16	206023
<i>When placed back to back</i>		
Space cover panel double, low	980x1039x16	206521
Space cover panel double, middle	980x1487x16	206522
Space cover panel double, high	980x1936x16	206523

NCS: Lacquered MDF, any NCS.

Colours



Dimensions: Width x Height (incl. plinth). x Depth. **Frame and front:** 16 mm. **Plinth:** 143 mm.

All doors are right-hung as standard.

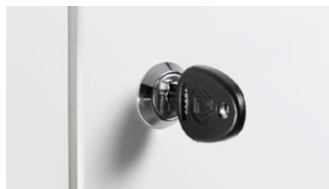
NCS refers to product lacquered in one optional NCS colour.

Master key

Name	Lock type	Art no.
Master key	Cabinet locks	840913



Padlock fittings, excluding padlocks.



Cabinet lock incl. 2 keys as standard.



RFID-locks EM or Mifare.



Code lock, mechanical, for private or public use.

Accessories

Name	Material	Size	Art no.
Space shelf insert <i>Turnable shelf is mounted on the right or left side of the cabinet. Are as standard powder coated, RAL 9010 white. It can be painted in any RAL colour at an additional cost.</i>	White metal	185x341x290	209040
Mirror		230x400	840912
Space single clothes rail	Aluminium	356	209009
Space double clothes rail	Aluminium	371	209010
Hook, for clothes rail	Alu look		830006
Anchor hook, fixed above panel	Alu look		830899
Stuff cork box	Cork	90x44x347	890101
Stuff shelf cork box	White aluminium	97x80x350	890201
Space single carpet	Black rubber	362x454	209026
Space single carpet shoe shelf	Black rubber	363x475	209023
Space single carpet open drawer	Black rubber	363x944	209025
Space wardrobe carpet, inner shelf	Black rubber	757x381	209030
Space double carpet	Black rubber	370x454	209027
Space double carpet wardrobe	Black rubber	757x454	209028
Space double carpet shoe shelf	Black rubber	758x475	209022
Space double carpet open drawer	Black rubber	773x455	209024



Anchor hook



Clothes rail

Alternative locks, addition

Name	Info
Code lock (mechanical)	For personal storage
Code lock (digital)	Available for both personal storage and public storage
RFID-lock	For personal/public storage



Digital code lock, black, for private or public use.

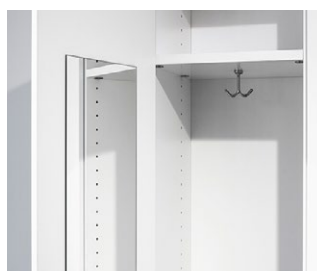


Digital code lock, silver, for private or public use.

* Contact TreCe for proximity based locks and locks as above.



Space shelf insert and black rubber mat



Mirror



Stuff cork box and shelf keep smaller items organised.

Dimensions: Width x Height (incl. plinth). x Depth. **Frame and front:** 16 mm. **Plinth:** 143 mm.
All doors are right-hung as standard.



Space with integrated electricity

Space can be supplemented with power strips in Aluminium for electricity. USB port with 2 sockets can also be mounted in the rail.

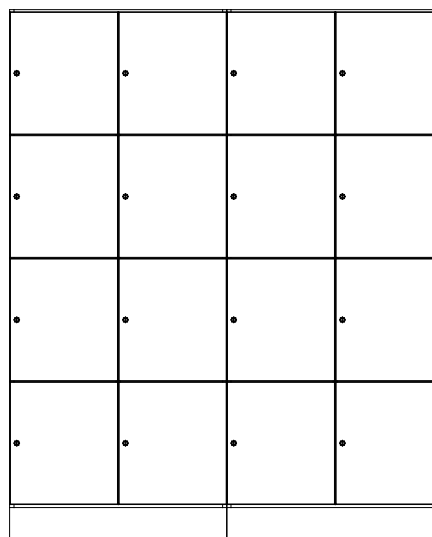
Accessories

Power cable with connection, extension cable and quick connectors/T-connection (max. 300 watts/socket).
Frames prepared for electrical duct and power strip.
Contact TreCe for details and prices.

Example 16 frames with electrical outlets

Lacquered in any NCS colour

	Art no.
Space frame double high, electric (x2)	205523
Space shelf double high, fixed (x12)	205121
Space door low, cabinet lock (x16)	202121
Space socket strip, 4 sockets (x4)	208052
Space power cable with connector (x2)	208040
Space splicing cable, quick connectors (3 pcs)	208041
Space T-coupling, quick (4 pcs)	208042



Dimensions: Width x Height (incl. plinth). x Depth. **Frame and front:** 16 mm. **Plinth:** 143 mm.
All doors are right-hung as standard.

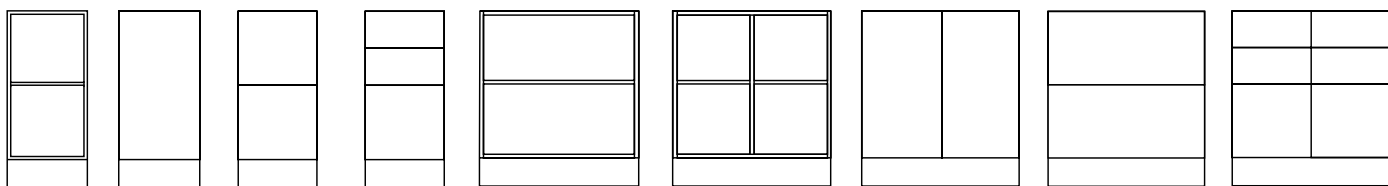


Space common storage, recycling counters

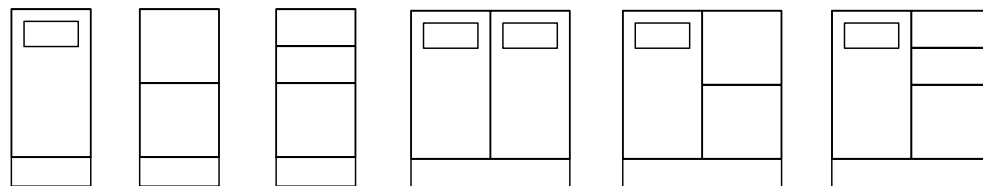
Space is now also available as a storage series with working height counters, in height 882 mm. Frames in single and double modules that can be freely combined with shelves, doors, partition panels and drawers in several variants.

The Space storage series also has its own recycling units.

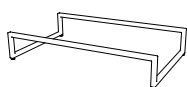
Choose freely from one of the ready-made modules or put together your own version. Suitable bag holder is available as an accessory. Inlets are also available in the top cover at an additional cost. Ready-made modules with a front inlet have a pull-out bag holder inside the door, recommended waste bags 85-125 L. The fronts are seamless with push open fittings.



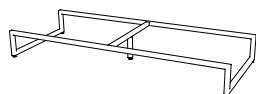
- Space** frame counter single
1x Shelf single
- Space** frame counter single
1x Shelf single
1x Door single
- Space** frame counter single
2x Drawer High single
- Space** frame counter single
2x Drawer Low single
1x Drawer High single
- Space** frame counter double
1x Shelf double
- Space** frame counter double
1x Partition panel
2x Shelf single
- Space** frame counter double
1x Shelf double
1x Pair door double
- Space** frame counter double
2x Drawer High double
- Space** frame counter double
1x Partition panel
4x Drawer Low single
2x Drawer High single



- MDS** 395x882x470
- MDS/2L** 395x882x470
- MDS/3L** 395x882x470
- MDD** 790x882x470
- MDD/2L** 790x882x470
- MDD/3L** 790x882x470



Space Space double leg stand
789x143x469

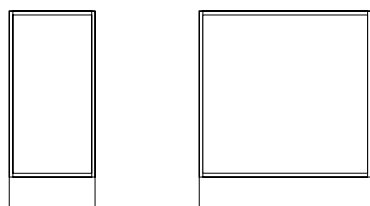


Space triple leg stand
1184x143x469

Plinths can be replaced with leg stands available in two sizes, double and triple. Choose from our 11 standard colours.

Dimensions: Width x Height (incl. plinth). x Depth. **Frame and front:** 16 mm. **Plinth:** 143 mm.
All doors are right-hung as standard.

Frames



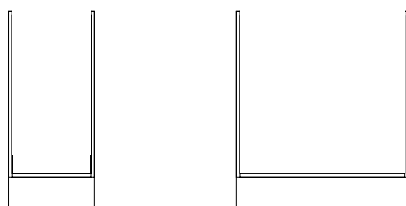
Frame counter single Frame counter double

Name	Size	White	NCS
Space frame counter single	395x882x470	201128	201129
Space frame counter double	790x882x470	201130	201131

White: Direct laminate | **NCS:** Lacquered MDF, any NCS.

Frame discs without top shelf

Top shelf replaced by compartment mouldings, width 60 mm. Used when making holes in the top panel.



Frame counter single Frame counter double

Name	Size	White	NCS
Space frame counter single, without top	395x882x470	201132	201133
Space frame counter double, without top	790x882x470	201134	201135

White: Direct laminate | **NCS:** Lacquered MDF, any NCS.

Partition panel

Name	Size	White	NCS
Space double partition panel counter	16x704	201140	201141

White: Direct laminate | **NCS:** Lacquered MDF, any NCS.

Shelves

Name	Size	White	NCS
Space single shelf counter	363x16x451	201150	201151
Space double shelf counter*	758x19x451	201152	201153
Space double shelf disk, divider	371x16x451	201154	201155

* Lamellar core

White: Direct laminate | **NCS:** Lacquered MDF, any NCS.

Bag holder

Name	Size	White	NCS
Space Bag holder	RAL 9001, white	355x412	209029

Recommended waste bags 85-125 L

Doors

Name	Size	NCS
Space door counter, push open	392x734x16	204001
Space door counter, with inlet*	392x734x16	204002
Space pair doors, push open	788x734x16	204003

The cover plate inside the metal door is powder coated as standard, RAL 9016 white. It can be painted in any RAL colour at an additional cost.

*Inlet: W:270 x H:125 mm

NCS: Lacquered MDF, any NCS.



Drawers

Name	Size	NCS
Space counter single drawer low	393x182x466	208066
Space counter single drawer high, high sides	393x366x466	208067
Space counter single drawer high, high sides	393x366x466	208068
Space counter double drawer low	788x182x466	208076
Space counter double drawer high, with railing	788x366x466	208077
Space counter double drawer high, high sides	788x366x466	208078

Drawers with 100% extension, max load weight 35 kg with push open fittings.

Inside dimensions drawer low:

W325 x H127 x D420 mm

Inside dimensions drawer high:

W325 x H311 x D420 mm.

NCS: Lacquered MDF, any NCS.



Drawer inserts

Name	Size	NCS
Space disk single drawer insert low, 6 compartments	135x154	209301
Space disk single drawer insert high, 6 compartments	135x154	209302
Space disk double drawer insert low, 12 compartments	135x171	209303
Space disk double drawer insert high, 12 compartments	135x171	209304

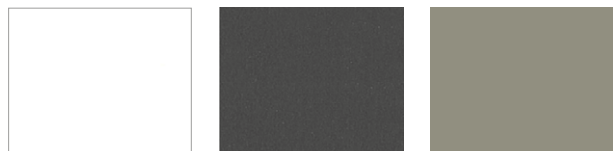


Dimensions: Width x Height (incl. plinth). x Depth. **Frame and front:** 16 mm. **Plinth:** 143 mm.
All doors are right-hung as standard.

Cover panels

Name	Size	NCS
Space cover panel single, counter	490x882x16	206024
<i>When placing modules back to back</i>		
Space cover panel double, counter	980x882x16	206524

NCS: Lacquered MDF, any NCS.



White
(F1040)

Anthracite
(F2297)

Olive
(F5343)

Top cover in compact laminate, black core

Name	Colour	Depth	Thickness	Art no.
Space top cover single	F2255 White	490	12	209140
Space top cover single	F2297 Anthracite	490	12	209141
Space top cover single	F5342 Olive	490	12	209142
<i>When placed back to back</i>				
Space top cover double	F2255 White	980	12	209143
Space top cover double	F2297 Anthracite	980	12	209144
Space top cover double	F5342 Olive	980	12	209145

Contact TreCe if you would like the top cover in another material.

Top cover

Name	Size	Thickness	NCS
Space top cover panel single	490	16	207021
<i>When placing modules back to back</i>			
Space top cover panel double	980	16	207022

NCS: Lacquered MDF, any NCS.

Inlets for top cover, compact laminate

Name	Size	Art no.
Space inlet square	220x220	209150
Space inlet round	Ø220	209152
Space inlet custom	Max. size 220x260	209151



Lid, compact laminate

Name	Description	Size	Colour	Art no.
Space lid, <i>Pfleiderer WSR209</i>	Lid for Space inlet Ø220 mm, art. no. 209152. Compact laminate white core and white knob RAL 9010.	Ø230	White	209153
Space lid, <i>Formica F2297</i>	Lid for Space inlet Ø220 mm, art. no. 209152. Compact laminate black core and anthracite knob RAL 7016.	Ø230	Anthracite	209154
Space lid, <i>Formica F5343</i>	Lid for Space inlet Ø220 mm, art. no. 209152. Compact laminate black core and olive coloured knob RAL 6013.	Ø230	Olive	209155

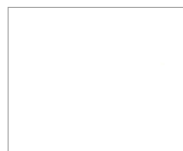


Dimensions: Width x Height (incl. plinth). x Depth. **Frame and front:** 16 mm. **Plinth:** 143 mm.
All doors are right-hung as standard.

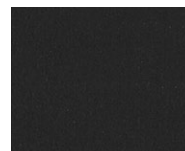
Countertop in high-pressure laminate Formica Collection Colors

Name	Colour	Depth	Thickness	Art no.
Space countertop single	F2255 White	490	23	209201
Space countertop single	F2297 Anthracite	490	23	209202
Space countertop single	F5342 Olive	490	23	209203
<i>When placed back to back</i>				
Space countertop double	F2255 White	980	23	209211
Space countertop double	F2297 Anthracite	980	23	209212
Space countertop double	F5342 Olive	980	23	209213

Contact TreCe if you would like the top cover in another material.



White
(F1040)



Anthracite
(F2297)



Olive
(F5343)

Holes for high-pressure laminate worktops

Inlet with powder coated steel frame

Name	Size	Colour	Art no.
Inlet round	Ø 110	White	820951
Inlet round	Ø 250	White	820953
Inlet round	Ø 110	Black	820952
Inlet round	Ø 250	Black	820954
Inlet square	250x250	White	820961
Inlet square	250x250	Black	820962



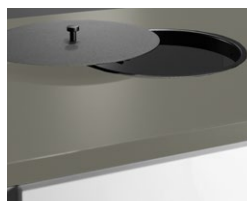
Inlet with powder-coated
frame, 250x250 mm.



Inlet with powder-coated
frame, 250x250 mm.

Lid with knob for round inlets in lacquered steel

Name	Size	Colour	Art no.
Lid	Ø 250	White	820957
Lid	Ø 250	Black	820959



Lid with knob for round
inlets in lacquered steel.

Inlet and lid with knob integrated/lowered in worktop

Name	Size	Material	Art no.
Inlet round	Ø 250	Stainless steel	820980
Lid inlet compact laminate*	Ø 250	White (F1040)	820985
Lid inlet compact laminate*	Ø 250	Anthracite (F2297)	820986

* Knob, Ø19 mm, stainless steel.



Inlet and lid integrated/
lowered in worktop.



Lid in compact laminate,
(F2297).

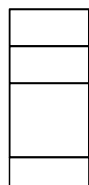
Dimensions: Width x Height (incl. plinth). x Depth. **Frame and front:** 16 mm. **Plinth:** 143 mm.
All doors are right-hung as standard.

Space recycling units finished modules

Hight: 882 mm



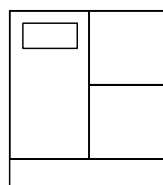
MDS/2L
395x882x470



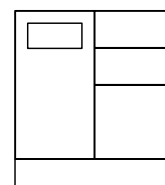
MDS/3L
395x882x470



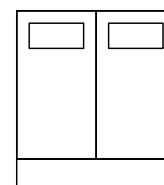
MDS
395x882x470



MDD/2L
790x882x470



MDD/3L
790x882x470



MDD
790x882x470

Name	Size	White
Space Recycling unit MDS/2L	395x882x470	200101
Space Recycling unit MDS/3L	395x882x470	200102
Space Recycling unit MDS*	395x882x470	200103

Name	Size	White
Space Recycling unit MDD/2L*	790x882x470	200111
Space Recycling unit MDD/3L*	790x882x470	200112
Space Recycling unit MDD*	790x882x470	200113

*Inlet: W:270 x H:125 mm.

Cover plate inside door, lacquered in RAL 9016 white.

Pull-out bag holder is included. Waste bags 85-125 L is recommended.

Drawers with 100% extension, max load weight 35 kg with push open fittings.

Inside dimensions drawer low: W325 x H127 x D420 mm

Inside dimensions drawer high: W325 x H311 x D420 mm.

Material White: Frames, plinths, backs and dividers in white direct laminate, 16 mm with 0.8 mm straight ABS edging.

Fronts in 16 mm lacquered MDF, NCS S 0500-N, white.

Accessories

Name	Suits	Fits	Size	Art no.
Space single carpet		Black rubber	362x454	209026
Space double carpet		Black rubber	370x454	209027
Containers 21L	Box		265x275x375	820927

Space symbol, foiled, white or anthracite



WASTE



PLASTIC



BOTTLES
CANS



BOTTLES



CARTON



CLEAR GLASS



COLOURED GLASS



METAL



PAPER



ORGANIC

Colour	WASTE	PLASTIC	BOTTLES CANS	BOTTLES	CARTON	CLEAR GLASS	COLOURED GLASS	METAL	PAPER	ORGANIC
White	209160	209161	209162	209163	209164	209165	209166	209167	209168	209169
Anthracite	209170	209171	209172	209173	209174	209175	209176	209177	209178	209179

Please contact TreCe if you require other symbols or text in other languages.



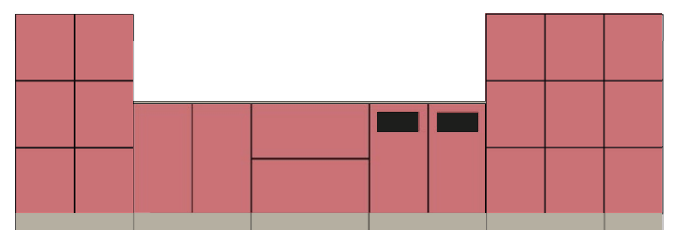
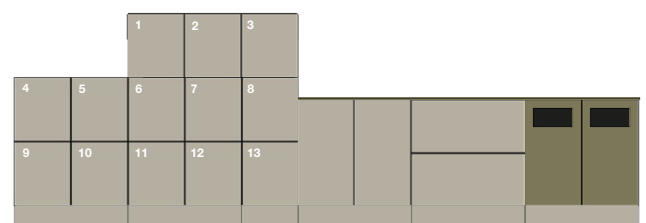
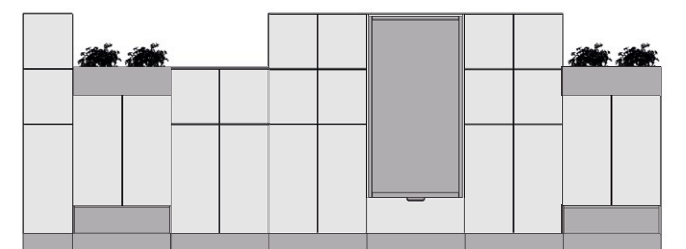
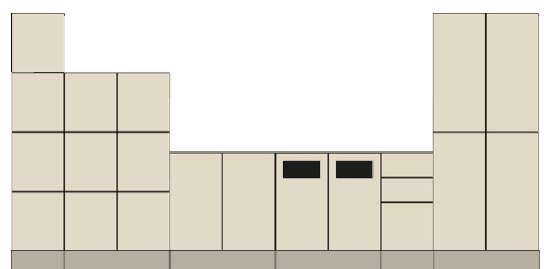
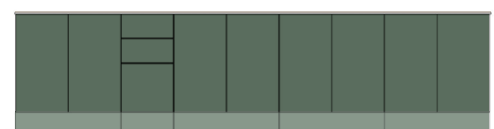
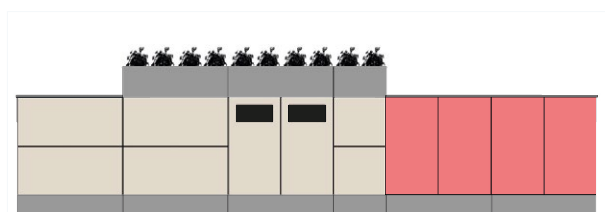
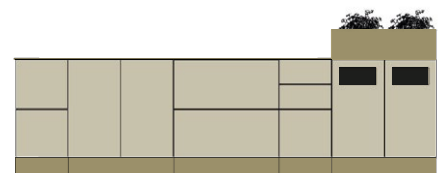
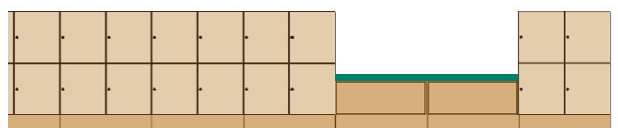
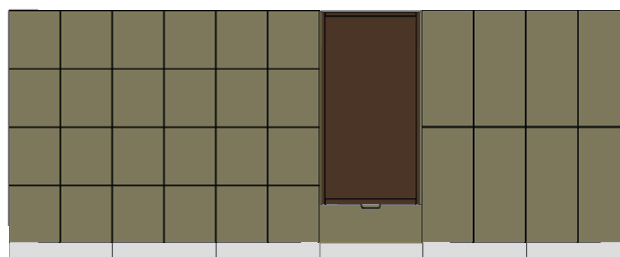
Combine your own storage with standard modules in white and any NCS colour.



The cover plate inside the metal door is powder coated as standard, RAL 9016 white. It can be painted in any RAL colour, at an additional cost.

Dimensions: Width x Height (incl. plinth). x Depth. **Frame and front:** 16 mm. **Plinth:** 143 mm.
All doors are right-hung as standard.

Space Combinations



Specifications Space

Space

MFC laminated surfaces within Space have a chip core, with the exception of some shelves. Back, frame and edging strip have matching colours unless otherwise stated.

Fronts, Shoe shelf, Open shelf/Bench and Storage box open/Flower box have an MDF core. Textiles at an additional cost.

Frame incl. plinth

Thickness 16 mm, 0.8 mm straight ABS-lipping.

- MFC laminate, white.
- Lacquered, any NCS-colour.
- Double module, width 790 mm
- Single module, width 395 mm

Back

Thickness 16 mm, MFC laminate in- and out. Lacquered when choosing any NCS-colour.

Plinth

Each unit has its own setback plinth, front and rear, with 4 adjustable feet, (Plinth height 143 mm.)

Leg stand

Leg stand in steel with adjustable feet, 4 legs. Delivered not fitted to cabinet, leg stand must be adjusted in height before cabinet is lifted on.

- Leg stand double fits Space double.
- Leg stand triple fits 1x Space double + 1x Space single.
- Leg stand height 143 mm.
- Available in 11 RAL colours.

Fronts

Seamless fronts, thickness 16 mm

- Lacquered MDF, any NCS colour

Inside dimensions:

Space door low: W363 x H424 x D454 mm. Space door middle: W363 x H573 x D454mm. Space door high: W363 x H864 x D454 mm.

Drawers

Drawers have soft closing. Extension capacity of 100%, maximum weight 35 kg.

- Drawers with railings or with elevated sides.

Doors to Space recycling units and Space counter

- With push open

Seat module with hatch door

Opens downwards with gas spring.

- Milled-in handle. Are powder coated white as standard. Can be painted in any RAL colour at an additional cost.

Cushions and fabric are additional

Shoe shelf, Open shelf/Bench and Storage box open/Flower box

Thickness 16 mm.

- Lacquered MDF, any NCS colour.
- Modules aligned with fronts.
- Plant pot can be combined with plastic box 19L.
- Accessories: Seat cushion

Double doors Wardrobes

With milled-in handles. Are as standard powder coated, white. It can be painted in any RAL colour at an additional cost.

Mail inlet

Powder-coated steel, White (RAL 9010). Opening 290x20 mm. Mail inlet has an angled steel lip on the inside of the door.

Hinges

- Self closing concealed hinges with integrated soft closing.
- Doors are right-hung as standard.

Shelves, fixed

Shelves mounted with milled-in connection fittings that are secured with screws.

- Shelves for lockers have a chip core
- Shelves for wardrobes have a lamellar wood core.

Shelves, removable for personal storage

The shelf is recessed in the front edge.

Mounted with milled shelf brackets, movable according to drill division c/c 32 mm.

Shelves, movable for storage

Installed with milled shelf brackets, removable according to drill division c/c 32 mm.

- 363 - 371 mm has chip core thickness of 16 mm
- 755 mm has laminated core with pine wood thickness 19 mm, max weight 120 kg.

Cover panels/Top cover panels

Thickness 16 mm.

- Lacquered MDF, any NCS colour.

Top cover in compact laminate

Thickness 10 mm

- F2255, white
- F2297 anthracite
- F5343 olive grey

Inlets for top cover, compact laminate

- Inlets square B220 x D220 mm
- Inlet custom, max. size B220 x D260 mm

Accessories

Space shelf insert, clothes rail, carpet, clothes hook, anchor hook, mirror and cork box Stuff.

Cabinet locks

Robust cabinet locks with master key system, individual lock numbers and 2 keys as standard. Identical locks are available at extra cost.

Lock types

Different types of locks and fittings are available for doors, such as electronic RFID locks, code locks, cabinet locks, padlock fittings and push-to-open. For network-based locks contact TreCe for individual advice.

General care instructions

Metal

Wipe with a slightly damp, soft lint-free cloth and mild detergent. Always wipe dry with a dry cloth. Never use solvents on painted metal nor any abrasive cleaners/ materials.

Wood

Wood is a living material and is affected for example by seasons, heat and humidity. Direct sunlight will give surfaces permanent colour and light differences. To avoid colour shifts, all surfaces should be exposed to equal amounts of light.

Normal/daily cleaning:

Dust dry and clean with mild soap solution or mild hand washing-up liquid. Wipe dry with a dry cloth. Never use strong detergents, solvents or products containing abrasives. Remove all stains as soon as possible and wipe the surface dry after cleaning.

Note! Use a minimum amount of water.

General info

Mounting

All modules are factory mounted. Worktops/ Cover panels/Top cover panels are mounted on site.

Warranty

We provide a 5 year factory warranty on Space. Other products, contact TreCe.

Cabinet locks

Robust cabinet locks with master key system, individual numbers with 2 keys as standard. Identical locks available to addition.

Contact TreCe for customisation of selected product.

QUICK INFO.

Content	Certification TreCe	Certification TreCe
Environmental, quality & social aspects	ISO 9001:2015	ISO 14001:2015
Country of manufacture	Certification Product	Approved user environments
Sweden	Möbelfakta	Offices, public spaces & schools



SVHC/ECHA's candidate list

No chemicals included in ECHA's candidate list of SVHC may be contained in levels of >0.1% by weight in the components, parts or chemicals that are included or used in the manufacturing of the furniture/product. See <http://echa.europa.eu/en/candidate-list-table>

Wood

Routines must be in place to ensure that wood based materials are traceable and come from legal and acceptable sources, see table 1.

Table 1: Requirements wood

Requirements	Complies
Has legal ownership and access rights	X
Follows nationally and locally applicable laws and regulations regarding use, environment, labour and welfare, health and safety, and other parties' rights.	X
Pays the relevant taxes and charges related to use.	X
Follows CITES regulations (only applicable to certain tree species, see the CITES website).	X
The wood complies with the requirements for formaldehyde emission requirements according to E1.	X

Metal

Fittings such as hinges, screws and handles for-fill the requirements in table 2.

Table 2: Requirements metal

Requirements	Complies
Metal that will have prolonged contact with skin (e.g. armrests) must not consist of alloys containing nickel, chromium III or chromium VI.	X

Adhesives

Adhesives used in manufacturing meet the requirements of table 3 which limit the use of environmentally and health hazardous volatile organic solvents (VOCs) and hazardous formaldehyde.

Table 3: Requirements adhesives

Requirements	Complies
Adhesives used in the manufacture of furniture or components for furniture may contain a maximum of 10% by weight VOC.	X
Adhesives used in the manufacture of furniture or components for furniture may contain a maximum of 0.2% by weight of free formaldehyde.	X

Plastic

Plastic parts such as edgings, fittings and post shelves meet the requirements in table 4.

Table 4: Requirements plastic

Requirements	Complies
Free from PVC (polyvinyl chloride)	X
Softeners/phthalates classified as hazard classification H360 have not been actively added or that the measured level does not exceed 0.1% by weight/substance and component.	X
Short-chain chlorinated paraffins (SCCPs) must not be actively added or that the measured level must not exceed 0.01% by weight/substance and component.	X
The following flame retardants have not been actively added or that the measured level does not exceed 0.1% by weight/substance and component.	X
Polybrominated biphenyls (PBBs) CAS-nr: 59536-65-1	
Decabromodiphenyl ether (dekaBDE) CAS-nr: 1163-19-5	
Pentabromodiphenylether (pentaBDE) CAS-nr: 32534-81-9	
Oktabromdiphenylether (oktaBDE) CAS-nr: 32536-52-0	
Tris (2,3-dibromopropyl) phosphate (TBPP) CAS-nr: 126-72-7	
Tris (1-aziridinyl) phosphine oxide (TEPA) CAS-nr: 5455-55-1	
Hexabromocyclododecane (HBCDD) CAS-nr: 25637-99-4	
Tris (2 chloroethyl) phosphate (TCEP) CAS-nr: 115-96-8	
No pigments containing lead, cadmium, tin, chromium VI or mercury have not been actively added or that the measured level does not exceed 0.01% by weight per component.	X

Surface treatment – white

Doors and fronts are UV-lacquered in white and meet the requirements stated in tables 5 and 6. Safety data sheets according to REACH CLP-regulation no1272/2008 are sent on request. Direct laminate products in beech, birch and oak are not surface treated.

Table 5: Requirements surface treatment

Requirements	Complies
The content of aromatic solvents / hydrocarbons in surface treatment products / preparations may not exceed 1.0% by weight.	X
Surface treatment with preparations containing VOC may have a maximum applied VOC component of 60 g / m ² for office / public / outdoor environment.	X

Table 6: Hazard class and hazard statement according to Regulation 790/2009

Hazard category	Hazard statement according to regulation 790/2009	Complies
Acute toxicity	H300, H301, H310, H311, H330, H331	X
Toxic to body organs	H370, H371, H372, H373	X
Carcinogenic	H350, H351	X
Mutagenic	H340, H341	X
Toxic for reproduction	H360, H361	X
Allergenic	H334	X
Dangerous to the environment	H400, H410, H411, H412, H413 If the use of surface treatment products is required for technical reasons, products labelled as dangerous to the environment (H400, H410, H411, H412, H413) may be acceptable if the content of environmentally hazardous substance <14 g/per m ² of surface.	X

The production

Space is manufactured and assembled in Sweden. Environmental aspects related to production are presented in table 7.

Table 7: The environmental aspects of production

Environmental aspect	
Environmentally classified materials / chemicals	Particularly hazardous chemicals, phasing out substances or priority risk reduction substances are not used. Handling and storage of all chemicals and substances are regulated so emissions to air, ground or water do not occur.
Surface coating	During the surface coating the production works actively to minimise the environmental impact through special handling and environmentally adapted colors and solvents. For example excess paint is collected and reused.
Emissions air	Emissions below the set license conditions. An air filter cleaner is installed that recycles tempered air which saves energy and reduces emissions to the outdoor environment.
Emissions water	Emissions below the set license conditions. Substances that are discharged into wastewater are environmentally friendly and contain no chemicals that the treatment plants cannot handle. Adhesives and varnishes that according to the safety data sheet are considered to pose a risk when released into water are collected in sealed containers and classified and treated as dangerous waste.
Waste	Residual material from particleboard is baled and collected for combustion in order to extract energy. TreCe is connected to the Packaging and Newspaper Collection (FTI). Waste is sorted according to the regulations that are based on the FTI and current legislation. Waste and residual products such as glue and oil residues are handled and collected separately.
Energy	In order to minimise energy consumption, heating is regulated based on working hours and which workstations are staffed. Investment in a compressor for a sustainable use of electricity resulted in an energy reduction of about 110,000 kWh/year.
Production optimization	The production process is optimised to save on materials, resulting in a reduced amount of waste, and to minimise energy consumption.
Energy per product	The energy consumption in electricity per product is 8.8 kWh.

The product

Environmental aspects linked to the product in addition to the materials are presented in table 8.

Table 8: The products aspects

Aspect	
Packaging	Stretch film and corrugated board used to pack TreCe products are free of chlorine and bleach. The box is glued with wheat or cornstarch.
Reuse and restoration	One of our core values is Smart design. This means, among other things, that we look at design from a wider perspective. TreCe products are long lasting. Instead of replacing the whole piece of furniture, there is the option of replacing only a few parts. In this way, our products become sustainable in the long term — a benefit for both you as a user and for the environment.
Lifetime and warranty	TreCe provides a 5-year warranty on the entire range and spare parts are available for 10 years. The estimated usage life is from 5 years up to 30 years, depending on the area of use.
Recycling	Material recycling leads to a reduction in virgin material extraction and thus reduces carbon dioxide emissions. Hinges and fittings can be melted down and wood-based materials can be recycled for the production of new chipboard which is almost as high quality as virgin. The materials are submitted to recycling facilities, contact your municipality for more information. CombiLine is designed so that the different materials can be separated without special tools. When dismantling, no environmentally hazardous emissions occur.

Social responsibility

We have ensured that this product is manufactured under good conditions, ie. with regard to social and ethical issues such as working conditions, human rights, labour, environment and corruption. We have sent these requirements to our suppliers and subcontractors, who have each certified that they are followed. A summary is shown in table 9 and applies to the entire manufacture process of a product and it's components. The starting point is the UN guidelines on the "Code of Conduct" and Möbelfakta's requirements for Social Responsibility are formulated on the basis of the UN's Global Compact. As well as conditions for social and ethical considerations regarding tax irregularities and illegal labour. The principles are based on below;

- UN Universal Declaration of Human Rights
- Rio Declaration on Environment and Development
- International Labour Organization (ILO) eight core conventions on human and labour rights
- UN Convention against Corruption
- Work environment requirements based on ILO conventions on health and safety

Table 9: Summary requirements for social responsibility

Requirements		Complies
Legislation	The furniture and its components must be manufactured in accordance with national legislation.	X
Human Rights	Producers, manufacturers and suppliers operations must comply with human rights.	X
Working conditions	Wages, child labour, conditions of employment, working hours, benefits, penalties, freedom of association, forced labour and discrimination.	X
Working environment	The company must constantly strive to improve the working environment and workplace safety for its employees.	X
Environment	Identify environmental impact, work actively with environmental issues and involve staff. Procedures for law compliance must be in place and followed up.	X
Anti-corruption	No form of extortion, corruption, bribery or favoritism to or from employees or organizations is tolerated.	X
Tax irregularities /fraud	In addition to the statutory obligations applicable to the employees concerned, shall also anti-labour and tax fraud are applied, such as illegal workers.	X
Undeclared/illegal labour	No undeclared/illegal labour shall be hired to preform product manufacturing.	X

Quality

This product has undergone extensive quality tests for safety and function, as well as surface resistance. The criteria and standards apply to the public environment, school environment and office environment and are shown in tables 10 and 11. The tests were conducted by RISE, a Swedish government research institute that performs testing and certification.

Table 10: Approved user environments

Product	Approved user environments	Complies
Space-products with Möbelfakta label	Public environment	X
	School environment	X
	Office environment	X

Table 11: Standards against which the product has been tested and approved

Standard	Scope	Complies
SS-EN 14073-2:2004	Office furniture — Storage furniture — Part 2: Safety requirements	X
SS-EN 16121:2013 + A1:2018	Non-domestic storage furniture — Requirements for safety, strength, durability and stability	X
SS-EN 12720:2009 + A1:2013	Surface resistance	X
SS 839117	Public environment / office	