

Space Cabinet & Recycling unit

Design | TreCe



Flexible modular design designed for both personal and communal storage in offices and public spaces. Space is easy to integrate thanks to its cohesive and thoughtful design. Well-crafted details such as doors with seamless design, shoe shelves, and benches that enliven with fronts create a seamless and stylish feeling. This is also reflected in the fact that Space is a sustainable choice as it is approved according to Möbelfakta, consists of sustainable materials, is manufactured with social responsibility, and quality-tested at RISE.

The modules in the Space series are designed to fit together, so you can let your imagination run wild as you build your unique solution. Choose between frames in white laminate or lacquered in any NCS colour. Doors in lacquered MDF, any NCS colour, which has a comprehensive design. Fronts are also available in oak and ash laminate. There are five complete modules for waste sorting and eight complete cabinets for the office's common storage. Explore the entire Space series, including personal and public storage, wardrobes, seating modules, cabinets, recycling units, and more.

Space comes with a standard plinth; for a different expression, the plinth can be replaced with lacquered leg frames for an additional cost. Leg frames are available in our 11 standard colours.

Locks and Closures

We offer various types of locks and closures for doors, such as electronic RFID locks, code locks, cabinet locks, padlock fittings, and push open. For network-based locks, contact TreCe for individual advice.

Accessories

Space counters come with accessories such as movable shelves, bag holders and mats.

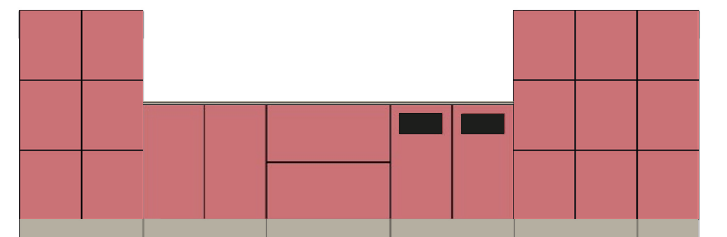
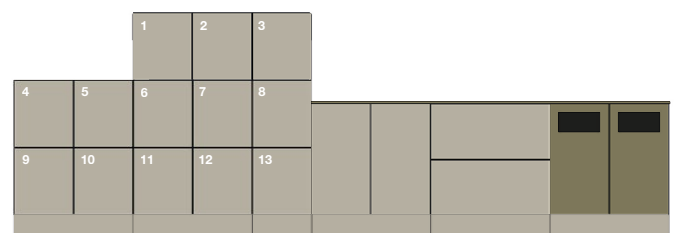
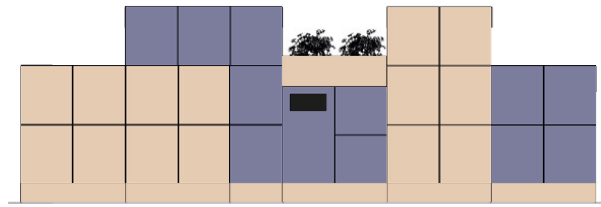
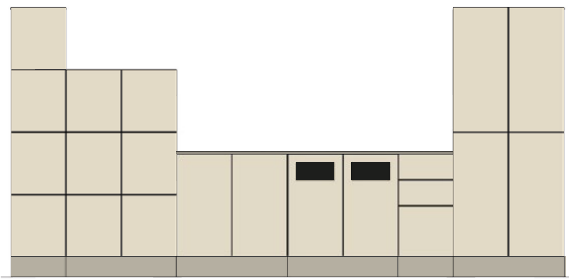
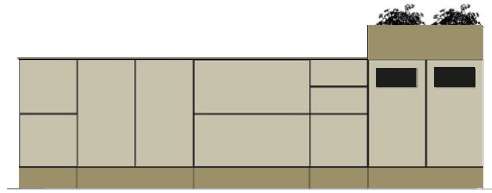
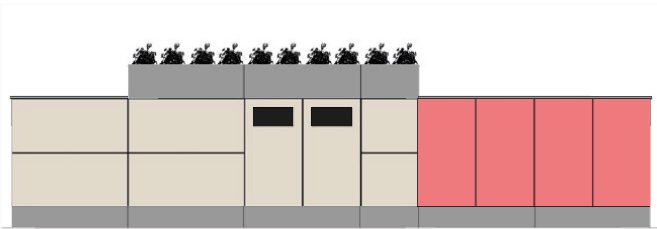
Customization

Space can be customized in both material and dimensions if you wish to put your own mark on the furniture. Contact TreCe for advice and a quote.

Reference images of both standard and customised Space



Space Combinations



Size: Width x Height (incl. base). x Depth. **Frame, fronts:** 16 mm. **Plinth height:** 143 mm.
All doors are right-hinged as standard.

Space Cabinet and Recycling unit

The Space storage series has counters and recycling units at working height, height 882 mm. Frames in single and double modules can be freely combined with shelves, partitions, doors and drawers in several variants.

Choose freely from any of the complete modules or assemble your own variant. Suitable bag holders are available as accessories. Holes are also available in the top panel at an additional cost. Complete modules with an inlet in the front and a pull-out bag holder inside the door, recommended rubbish bag 85-125 L.

The fronts are complete with push open fittings. Does not apply to doors with inlets.

Complete modules

Frame, plinth, back 16 mm thick: In white direct laminate, with 0.8 mm straight ABS edging.

Fronts, 16 mm thick, lacquered MDF:

White/White = Body in white laminate with fronts lacquered in NCS S 0500-N, white.

White/NCS = Frame in white laminate with fronts lacquered in any NCS colour.

Plinth height: 143 mm

Inner dimensions of drawer H182: B325 x H127 x D420 mm

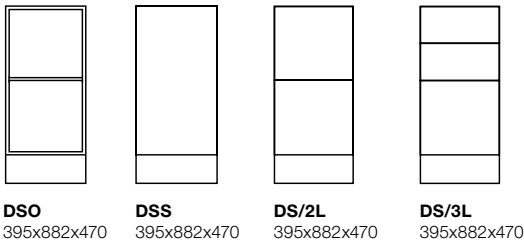
Inner dimensions of drawer H366: B325 x H311 x D420 mm.

Space Cabinet has drawers with high sides, 100% extension, max load weight 35 kg with push open fittings.

Space Cabinet, complete modules

Height: 882 mm

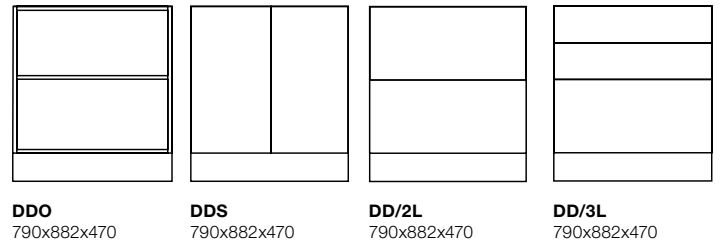
Incl. 1 movable shelf



| Space cabinet single | Size | White |
|--------------------------|-------------|--------|
| Space cabinet single DSO | 395x882x470 | 200104 |

| Space cabinet single | Size | White/White | White/NCS |
|----------------------------|-------------|-------------|-----------|
| Space cabinet single DSS | 395x882x470 | 200105 | 200106 |
| Space cabinet single DS/2L | 395x882x470 | 200107 | 200108 |
| Space cabinet single DS/3L | 395x882x470 | 200109 | 200110 |

Incl. 1 movable shelf

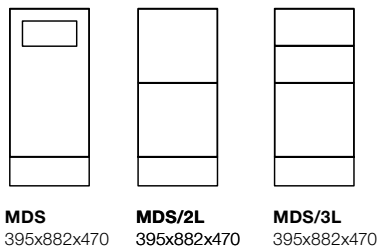


| Space cabinet double | Size | White |
|--------------------------|-------------|--------|
| Space cabinet double DDO | 790x882x470 | 200114 |

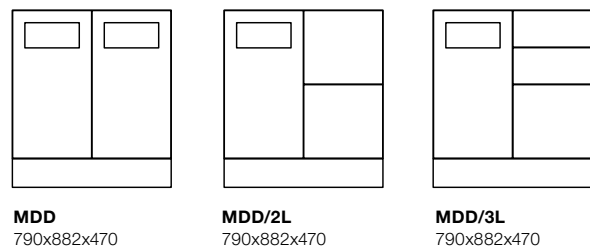
| Space cabinet double | Size | White/White | White/NCS |
|----------------------------|-------------|-------------|-----------|
| Space cabinet double DDS | 790x882x470 | 200115 | 200116 |
| Space cabinet double DD/2L | 790x882x470 | 200117 | 200118 |
| Space cabinet double DD/3L | 790x882x470 | 200119 | 200120 |

Space Recycling unit, complete modules

Height: 882 mm | Extractable sack holder included for door with inlet.



| Space Recycling unit single | Size | White/White | White/NCS |
|-----------------------------|-------------|-------------|-----------|
| Space Recycling unit MDS* | 395x882x470 | 200103 | 200204 |
| Space Recycling unit MDS/2L | 395x882x470 | 200101 | 200202 |
| Space Recycling unit MDS/3L | 395x882x470 | 200102 | 200203 |



| Space Recycling unit double | Size | White/White | White/NCS |
|------------------------------|-------------|-------------|-----------|
| Space Recycling unit MDD* | 790x882x470 | 200113 | 200213 |
| Space Recycling unit MDD/2L* | 790x882x470 | 200111 | 200211 |
| Space Recycling unit MDD/3L* | 790x882x470 | 200112 | 200212 |

* Inlet: W:270 x H:125 mm.

Cover plate inside the door, painted in RAL 9016 white.

Garbage bag 85-125 L is recommended.

Accessories

| Name | Suits | Material | Size | Art nr |
|---------------------|-------|--------------|-------------|--------|
| Space single carpet | | Black rubber | 362x454 | 209026 |
| Space double carpet | | Black rubber | 370x454 | 209027 |
| Containers 21L | Draw | | 265x275x375 | 820927 |

Size: Width x Height (incl. base), x Depth. **Frame, fronts:** 16 mm. **Plinth height:** 143 mm.
All doors are right-hinged as standard.

Space Containers



47 L



19 L



21 L



19 L



10 L



Containers 21 L



Containers 19 L + 10 L

| Name | Suits | Color | Size | Art no. |
|------------------|---|-------------|-------------|---------|
| Containers 47 L | Double drawer H366 | Transparent | 548x283x384 | 820910 |
| Plastic box 19 L | Single & double drawer H366 | Transparent | 446x190x354 | 209099 |
| Containers 21 L | Single drawer H366 | Grey | 265x275x375 | 820927 |
| Containers 19 L | Single drawer H366. Can be combined with 10 L | Grey | 230x283x330 | 820919 |
| Containers 10 L | Single drawer H366. Can be combined with 19 L | Grey | 255x283x165 | 820918 |

Space symbol, foiled, white or anthracite, h 145 mm



WASTE



PLASTIC

BOTTLES
CANS

BOTTLES



CANS



CARTON



CLEAR GLASS



COLOURED GLASS



GLASS



METAL



PAPER



ORGANIC

| Color | WASTE | PLASTIC | BOTTLES CANS | BOTTLES | CANS | CARTON | CLEAR GLASS | COLOURED GLASS | GLASS | METAL | PAPER | ORGANIC |
|------------|--------|---------|-----------------|---------|--------|--------|-------------|----------------|--------|--------|--------|---------|
| White | 209160 | 209161 | 209162 | 209163 | 209190 | 209164 | 209165 | 209166 | 209194 | 209167 | 209168 | 209169 |
| Anthracite | 209170 | 209171 | 209172 | 209173 | 209191 | 209174 | 209175 | 209176 | 209195 | 209177 | 209178 | 209179 |

Please contact TreCe if you require different symbols or text in other languages.



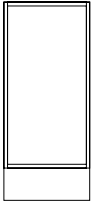
Combine your own storage with standard modules in white and any NCS colour.



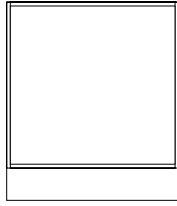
The cover plate inside the metal door is powder coated as standard, RAL 9016 white. Can be painted in any RAL colour, at an additional cost.

Size: Width x Height (incl. base). x Depth. **Frame, fronts:** 16 mm. **Plinth height:** 143 mm.
All doors are right-hinged as standard.

Cabinet frame



Single frame cabinet



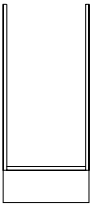
Double frame cabinet

| Name | Size | White | NCS |
|----------------------------|-------------|--------|--------|
| Space single frame cabinet | 395x882x470 | 201128 | 201129 |
| Space double frame cabinet | 790x882x470 | 201130 | 201131 |

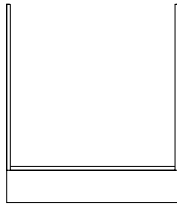
White: White direct laminate | **NCS:** Lacquered MDF, any NCS

Cabinet frame without top shelf

Top shelf replaced by compartment mouldings, width 60 mm.
Used when making holes in the top panel.



Single frame cabinet without top shelf



Double frame cabinet without top shelf

| Name | Size | White | NCS |
|--|-------------|--------|--------|
| Space single frame cabinet without top shelf | 395x882x470 | 201132 | 201133 |
| Space double frame cabinet without top shelf | 790x882x470 | 201134 | 201135 |

White: White direct laminate | **NCS:** Lacquered MDF, any NCS

Partition wall

| Name | Size | White | NCS |
|----------------------------------|------------|--------|--------|
| Space double partition wall unit | 454x704x16 | 201140 | 201141 |

White: White direct laminate | **NCS:** Lacquered MDF, any NCS

Shelves

| Name | Size | White | NCS |
|------------------------------------|------------|--------|--------|
| Space single shelf, movable | 363x16x451 | 201150 | 201151 |
| Space double shelf movable* | 758x19x451 | 201152 | 201153 |
| Space double shelf, partition wall | 371x16x451 | 201154 | 201155 |

* Lamellar core

White: White direct laminate | **NCS:** Lacquered MDF, any NCS

Bag holders

| Name | Color | Size | Art no. |
|-------------------|-----------------|---------|---------|
| Space Bag holders | RAL 9001, white | 355x412 | 209029 |

Recommended rubbish bag 85-125 L

Doors, push open

| Name | Size | NCS | Oak | Ash |
|--|------------|--------|--------|--------|
| Space cabinet door 734, push open | 392x734x16 | 204001 | 214001 | 224001 |
| Space cabinet double door 734, push open | 788x734x16 | 204003 | 214003 | 224003 |

NCS: Lacquered MDF, any NCS.

Oak: Oak laminate | **Ash:** Ash laminate

Doors with inlets

| Name | Size | NCS |
|-------------------------------------|------------|--------|
| Space cabinet door 734, with inlet* | 392x734x16 | 204002 |

*The cover plate inside the metal door is as standard powder coated, RAL 9016 white. Can be painted in any RAL colour, at an additional cost.

* Inset: W:270 x H:125 mm.

Door without push open fittings.

NCS: Lacquered MDF, any NCS.



Drawers 100% pull-out, push open

| Name | Size | NCS | Oak | Ash |
|---|-------------|--------|--------|--------|
| Space cabinet single drawer 182 | 393x182x466 | 208066 | 218066 | 228066 |
| Space cabinet single drawer 366, w. railing | 393x366x466 | 208067 | 218067 | 228067 |
| Space cabinet single drawer 366, high side | 393x366x466 | 208068 | 218068 | 228068 |
| Space cabinet double drawer 182 | 788x182x466 | 208076 | 218076 | 228076 |
| Space cabinet double drawer 366, w. railing | 788x366x466 | 208077 | 218077 | 228077 |
| Space cabinet double drawer 366, high side | 788x366x466 | 208078 | 218078 | 228078 |

Drawers with 100% extension, max load weight 35 kg with push open fittings.

Inner dimensions of drawers:

Single drawer 182: B325 x H127 x D420 mm

Single drawer 366: B325 x H311 x D420 mm

Double drawer 182: B720 x H127 x D420 mm

Double drawer 366: B720 x H311 x D420 mm

NCS: Lacquered MDF, any NCS.

Oak: Oak laminate | **Ash:** Ash laminate



Drawer inserts

| Name | Size | Art no. |
|---|---------|---------|
| Space cabinet single drawer insert H67, 6 slots | 135x154 | 209301 |
| Space cabinet single drawer insert H182, 6 slots | 135x154 | 209302 |
| Space cabinet double drawer insert H67, 12 slots | 135x171 | 209303 |
| Space cabinet double drawer insert H182, 12 slots | 135x171 | 209304 |



Dimensions: Width x Height (incl. plinth). x Depth. **Frame and front:** 16 mm. **Plinth:** 143 mm.

Plinth

| Name | Size | White | NCS | Oak | Ash |
|-----------------------------------|-------------|--------|--------|--------|--------|
| Space plinth, single | 395x143x430 | 208072 | 208082 | 218072 | 228072 |
| Space plinth, double | 790x143x430 | 208071 | 208081 | 218071 | 228071 |
| Space plinth, single back to back | 395x143x450 | 208172 | 208182 | 218172 | 228172 |
| Space plinth, double back to back | 790x143x450 | 208171 | 208181 | 218171 | 228171 |

White: White direct laminate | **NCS:** Lacquered MDF, any NCS.

Oak: Oak laminate | **Ash:** Ash laminate

Storage box open/ Plant box



| Name | Size | NCS | Oak | Ash |
|---|-------------|--------|--------|--------|
| Space single open storage 232 | 395x232x487 | 209093 | 219093 | 229093 |
| Space double open storage 232 | 790x232x487 | 209091 | 219091 | 229091 |
| Space single open storage 232, back to back | 395x232x976 | 209092 | 219092 | 229092 |

White: White direct laminate | **NCS:** Lacquered MDF, any NCS.

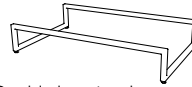
Oak: Oak laminate | **Ash:** Ash laminate

Lives with fronts.

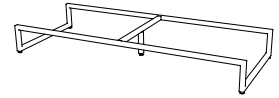
Accessories -

| Storage box open/Plant box | Material | Size | Art.no |
|----------------------------------|--------------|-------------|--------|
| Space single carpet open storage | Black rubber | 363x944 | 209025 |
| Space double carpet open storage | Black rubber | 773x455 | 209024 |
| Plastic box 19 L, planting | Transparent | 446x190x354 | 209099 |

Leg stand



Double leg stand



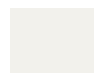







Triple leg stand

| Name | Colour | Size | Art no. |
|------------------------|----------|--------------|---------|
| Space double leg stand | RAL 9010 | 789x143x469 | 209101 |
| Space double leg stand | RAL 7032 | 789x143x469 | 209102 |
| Space double leg stand | RAL 7016 | 789x143x469 | 209103 |
| Space double leg stand | RAL 5023 | 789x143x469 | 209104 |
| Space double leg stand | RAL 1013 | 789x143x469 | 209105 |
| Space double leg stand | RAL 6013 | 789x143x469 | 209106 |
| Space double leg stand | RAL 6020 | 789x143x469 | 209107 |
| Space double leg stand | RAL 8014 | 789x143x469 | 209108 |
| Space double leg stand | RAL 1017 | 789x143x469 | 209109 |
| Space double leg stand | RAL 3014 | 789x143x469 | 209110 |
| Space double leg stand | RAL 3005 | 789x143x469 | 209111 |
| Space triple leg stand | RAL 9010 | 1184x143x469 | 209121 |
| Space triple leg stand | RAL 7032 | 1184x143x469 | 209122 |
| Space triple leg stand | RAL 7016 | 1184x143x469 | 209123 |
| Space triple leg stand | RAL 5023 | 1184x143x469 | 209124 |
| Space triple leg stand | RAL 1013 | 1184x143x469 | 209125 |
| Space triple leg stand | RAL 6013 | 1184x143x469 | 209126 |
| Space triple leg stand | RAL 6020 | 1184x143x469 | 209127 |
| Space triple leg stand | RAL 8014 | 1184x143x469 | 209128 |
| Space triple leg stand | RAL 1017 | 1184x143x469 | 209129 |
| Space triple leg stand | RAL 3014 | 1184x143x469 | 209130 |
| Space triple leg stand | RAL 3005 | 1184x143x469 | 209131 |

Space double leg stand: Steel leg stand with adjustable feet, 4 legs. Fits Space double frame. Delivered not fitted to cabinet, leg stand must be adjusted in height before cabinet is lifted on.

Space triple leg stand: Steel leg stand with adjustable feet, 5 legs (1 support leg in the middle). Fits 1x Space double frame + 1x Space single frame. Delivered not fitted to cabinet, leg stand must be adjusted in height before cabinet is lifted on.

Colours

| | | | | | |
|---|--|---|---|---|---|
|  |  |  |  |  |  |
| RAL 9010 White | RAL 7032 Warm grey | RAL 7016 Anthracite | RAL 5023 Brilliant blue | RAL 1013 Pearl White | RAL 6013 Olive |
|  |  |  |  |  | |
| RAL 6020 Forest green | RAL 8014 Chocolate | RAL 1017 Saffron | RAL 3014 Old Pink | RAL 3005 Wine red | |



Size: Width x Height (incl. base), x Depth. **Frame, fronts:** 16 mm. **Plinth** height: 143 mm.
All doors are right-hinged as standard.

Top cover in compact laminate, black core, thk 12 mm

| Name | Colour | Depth | Art no. |
|---------------------------------|------------------|-------|---------|
| Space top cover single | F2255 White | 490 | 209140 |
| Space top cover single | F2297 Anthracite | 490 | 209141 |
| Space top cover single | F5343 Olive | 490 | 209142 |
| <i>When placed back to back</i> | | | |
| Space top cover double | F2255 White | 980 | 209143 |
| Space top cover double | F2297 Anthracite | 980 | 209144 |
| Space top cover double | F5343 Olive | 980 | 209145 |

Contact TreCe if you would like the top cover in another material.



White
(F1040)



Anthracite
(F2297)



Olive
(F5343)

Inlets for top cover, compact laminate

| Name | Size | Art no. |
|--------------------|-------------------|---------|
| Space inlet square | 250x250 | 209150 |
| Space inlet round | Ø220 | 209152 |
| Space inlet custom | Max. size 220x260 | 209151 |

Lid, compact laminate

| Name | Description | Size | Color | Art no. |
|--|--|------|------------|---------|
| Space lid, <i>Pfleiderer WSR209</i> | Lid for Space inlet Ø220 mm, art. no. 209152. Compact laminate white core and white knob RAL 9010. | Ø230 | White | 209153 |
| Space lid, <i>Formica F2297</i> | Lid for Space inlet Ø220 mm, art. no. 209152. Compact laminate black core and anthracite knob RAL 7016. | Ø230 | Anthracite | 209154 |
| Space lid, <i>Formica F5343</i> | Lid for Space inlet Ø220 mm, art. no. 209152. Compact laminate black core and olive coloured knob RAL 6013. | Ø230 | Olive | 209155 |



Contact TreCe if the top plate is required in another material.

Cover panels, thk 16 mm

| Name | Size | NCS | Oak | Ash |
|--|------------|--------|--------|--------|
| Space cover panel single, counter | 490x882x16 | 206024 | 216024 | 226024 |
| <i>When placing modules back to back</i> | | | | |
| Space cover panel double, counter | 980x882x16 | 206524 | 216524 | 226524 |

NCS: Lacquered MDF, any NCS.

Oak: Oak laminate | **Ash:** Ash laminate

Top cover thk 16mm

| Name | Size | NCS | Oak | Ash |
|--|------|--------|--------|--------|
| Space top cover single | 490 | 207021 | 217021 | 227021 |
| <i>When placing modules back to back</i> | | | | |
| Space top cover double | 980 | 207022 | 217022 | 227022 |

NCS: Lacquered MDF, any NCS.

Oak: Oak laminate | **Ash:** Ash laminate



Size: Width x Height (incl. base). x Depth. **Frame, fronts:** 16 mm. **Plinth height:** 143 mm.
All doors are right-hinged as standard.

Worktop in high pressure laminate Formica Collection Colors, thk 23 mm

| Name | Colour | Depth | Art no. |
|---------------------------------|------------------|-------|---------|
| Space worktop single | F2255 White | 490 | 209201 |
| Space worktop single | F2297 Anthracite | 490 | 209202 |
| Space worktop single | F5343 Olive | 490 | 209203 |
| <i>When placed back to back</i> | | | |
| Space worktop double | F2255 White | 980 | 209211 |
| Space worktop double | F2297 Anthracite | 980 | 209212 |
| Space worktop double | F5343 Olive | 980 | 209213 |



White (F1040)



Anthracite (F2297)



Olive (F5343)

Contact TreCe if you would like the top cover in another material.

Worktop in high pressure laminate Pfleiderer Wood decors, thk 23 mm

| Name | Colour | Depth | Art no. |
|---------------------------------|------------|-------|---------|
| Space worktop single | R20095/Oak | 490 | 219201 |
| Space worktop single | R34027/Ash | 490 | 229201 |
| <i>When placed back to back</i> | | | |
| Space worktop double | R20095/Oak | 980 | 219211 |
| Space worktop double | R34027/Ash | 980 | 229211 |



Oak (R20095)



Ash (R34027)

Contact TreCe if you would like the top cover in another material.

Holes for high-pressure laminate worktops

Inlet with powder coated steel frame

| Name | Size | Colour | Art no. |
|--------------|---------|--------|---------|
| Inlet round | Ø 110 | White | 820951 |
| Inlet round | Ø 250 | White | 820953 |
| Inlet round | Ø 110 | Black | 820952 |
| Inlet round | Ø 250 | Black | 820954 |
| Inlet square | 250x250 | White | 820961 |
| Inlet square | 250x250 | Black | 820962 |



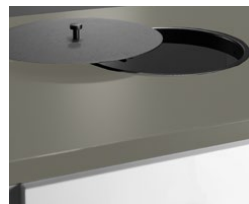
Inlet with powder coated frame in steel, 250x250 mm.



Inlet with powder coated frame in steel, 250x250 mm.

Lid with knob for round inlets in lacquered steel

| Name | Size | Colour | Art no. |
|------|-------|--------|---------|
| Lid | Ø 250 | White | 820957 |
| Lid | Ø 250 | Black | 820959 |



Lid with knob for round inlets in lacquered steel.

Inlet and lid with knob integrated/lowered in worktop

| Name | Size | Material | Art no. |
|-----------------------------|-------|--------------------|---------|
| Inlet round | Ø 250 | Stainless steel | 820980 |
| Lid inlet compact laminate* | Ø 250 | White (F1040) | 820985 |
| Lid inlet compact laminate* | Ø 250 | Anthracite (F2297) | 820986 |

* Knob, Ø19 mm, stainless steel.



Inlet integrated/lowered in worktop.



Lid in compact laminate, (F2297).

Specifications Space

Space

MFC laminated surfaces within Space have a chip core, with the exception of some shelves. Back, frame and edging strip have matching colours unless otherwise stated.

Lacquered fronts, Shoe shelf, Open shelf/Bench and Storage box open/Flower box have an MDF core. Textiles at an additional cost.

Frame incl. plinth

Thickness 16 mm, 0.8 mm straight ABS-lipping.

- MFC laminate, white.
- Lacquered, any NCS-colour.
- Double module, width 790 mm
- Single module, width 395 mm

Back

Thickness 16 mm, MFC laminate in- and out. Lacquered when choosing any NCS-colour.

Plinth

Each unit has its own setback plinth, front and rear, with 4 adjustable feet, (Plinth height 143 mm.)

Leg stand

Leg stand in steel with adjustable feet, 4 legs. Delivered not fitted to cabinet, leg stand must be adjusted in height before cabinet is lifted on.

- Leg stand double fits Space double.
- Leg stand triple fits 1x Space double + 1x Space single.
- Leg stand height 143 mm.
- Available in 11 RAL colours.

Fronts

Seamless fronts, thickness 16 mm

- Lacquered MDF, any NCS colour, oak and ash laminate.

Inside dimensions:

Space door low: W363 x H424 x D454 mm.

Space door middle: W363 x H573 x D454mm.

Space door high: W363 x H864 x D454 mm.

Drawers

Drawers have soft closing. Extension capacity of 100 %, maximum weight 35 kg.

- Drawers with railings or with elevated sides.

Doors to Space recycling units and Space counter

- With push open

Seat module with hatch door

Opens downwards with gas spring.

- Milled-in handle. Are powder coated white as standard. Can be painted in any RAL colour at an additional cost.

Cushions and fabric are additional

Shoe shelf, Open shelf/Bench and Storage box open/Flower box

Thickness 16 mm.

- Lacquered MDF, any NCS colour, oak and ash laminate.
- Modules aligned with fronts.
- Plant pot can be combined with plastic box 19 L.
- Accessories: Seat cushion

Double doors Wardrobes

With milled-in handles. Are as standard powder coated, white. It can be painted in any RAL colour at an additional cost.

Mail inlet

Powder coated steel, White (RAL 9010).

Opening 290x20 mm. Mail inlet has an angled steel lip on the inside of the door.

Hinges

- Self closing concealed hinges with integrated soft closing.
- Doors are right-hung as standard.

Shelves, fixed

Shelves mounted with milled-in connection fittings that are secured with screws.

- Shelves lockers have a chip core
- Shelves for wardrobes have a lamellar wood core.

Shelves, movable for personal storage

The shelf is recessed in the front edge.

Mounted with milled shelf brackets, movable according to drill division c/c 32 mm.

Shelves, movable for storage

Installed with milled shelf brackets, movable according to drill division c/c 32 mm.

- 363 - 371 mm has chip core thickness of 16 mm
- 755 mm has laminated core with pine wood thickness 19 mm, max weight 120 kg.

Cover panels/Top cover

Thickness 16 mm.

- Lacquered MDF, any NCS colour, oak and ash laminate.

Top cover in compact laminate, black core

Thickness 12 mm.

- F2255, white
- F2297, anthracite
- F5343, olive grey

Worktop in high pressure laminate

Thickness 23 mm

Formica Collection Colors

F2255, white | F2297, anthracite | F5343, olive

Pfleiderer Wood decors

R20095, Oak | R34027, Ash

Inlets for top cover, compact laminate

- Inlets square B220 x D220 mm
- Inlet custom, max. size B220 x D260 mm

Accessories

Space shelf insert, clothes rail, carpet, clothes hook, anchor hook, mirror and cork box Stuff.

Cabinet locks

Robust cabinet locks with master key system, individual lock numbers and 2 keys as standard. Identical locks are available at extra cost.

Lock types

Different types of locks and fittings are available for doors, such as electronic RFID locks, code locks, cabinet locks, padlock fittings and push-to-open. For network-based locks contact TreCe for individual advice.

General care instructions

Metal

Wipe with a slightly damp, soft lint-free cloth and mild detergent. Always wipe dry with a dry cloth. Never use solvents on painted metal nor any abrasive cleaners/ materials.

Wood

Wood is a living material and is affected for example by seasons, heat and humidity. Direct sunlight will give surfaces permanent colour and light differences. To avoid colour shifts, all surfaces should be exposed to equal amounts of light.

Normal/daily cleaning:

Dust dry and clean with mild soap solution or mild hand washing-up liquid. Wipe dry with a dry cloth. Never use strong detergents, solvents or products containing abrasives. Remove all stains as soon as possible and wipe the surface dry after cleaning.

Note! Use a minimum amount of water.

General info

Mounting

All modules are factory mounted. Worktops/ Cover panels/Top cover panels are mounted on site.

Warranty

We provide a 5 year factory warranty on Space. Other products, contact TreCe.

Contact TreCe for customisation of selected product.

QUICK INFO.

| | | |
|---|-----------------------|----------------------------------|
| Content | Certification TreCe | Certification TreCe |
| Environmental, quality & social aspects | ISO 9001:2015 | ISO 14001:2015 |
| Country of manufacture | Certification Product | Approved user environments |
| Sweden | Möbelfakta | Offices, public spaces & schools |



SVHC/ECHA's candidate list

No chemicals included in ECHA's candidate list of SVHC may be contained in levels of >0.1% by weight in the components, parts or chemicals that are included or used in the manufacturing of the furniture/product. See <http://echa.europa.eu/en/candidate-list-table>

Wood

Routines must be in place to ensure that wood based materials are traceable and come from legal and acceptable sources, see table 1.

Table 1: Requirements wood

| Requirements | Complies |
|--|----------|
| Has legal ownership and access rights | X |
| Follows nationally and locally applicable laws and regulations regarding use, environment, labour and welfare, health and safety, and other parties' rights. | X |
| Pays the relevant taxes and charges related to use. | X |
| Follows CITES regulations (only applicable to certain tree species, see the CITES website). | X |
| The wood complies with the requirements for formaldehyde emission requirements according to E1. | X |

Metal

Fittings such as hinges, screws and handles for-fill the requirements in table 2.

Table 2: Requirements metal

| Requirements | Complies |
|---|----------|
| Metal that will have prolonged contact with skin (e.g. armrests) must not consist of alloys containing nickel, chromium III or chromium VI. | X |

Adhesives

Adhesives used in manufacturing meet the requirements of table 3 which limit the use of environmentally and health hazardous volatile organic solvents (VOCs) and hazardous formaldehyde.

Table 3: Requirements adhesives

| Requirements | Complies |
|--|----------|
| Adhesives used in the manufacture of furniture or components for furniture may contain a maximum of 10% by weight VOC. | X |
| Adhesives used in the manufacture of furniture or components for furniture may contain a maximum of 0.2% by weight of free formaldehyde. | X |

Sustainability

Plastic

Plastic parts such as edgings, fittings and post shelves meet the requirements in table 4.

Table 4: Requirements plastic

| Requirements | Complies |
|---|----------|
| Free from PVC (polyvinyl chloride) | X |
| Softeners/phthalates classified as hazard classification H360 have not been actively added or that the measured level does not exceed 0.1% by weight/substance and component. | X |
| Short-chain chlorinated paraffins (SCCPs) must not be actively added or that the measured level must not exceed 0.01% by weight/substance and component. | X |
| The following flame retardants have not been actively added or that the measured level does not exceed 0.1% by weight/substance and component. | X |
| Polybrominated biphenyls (PBBs) CAS-nr: 59536-65-1 | |
| Decabromodiphenyl ether (dekaBDE) CAS-nr: 1163-19-5 | |
| Pentabromodiphenylether (pentaBDE) CAS-nr: 32534-81-9 | |
| Oktabromodiphenylether (oktaBDE) CAS-nr: 32536-52-0 | |
| Tris (2,3-dibromopropyl) phosphate (TBPP) CAS-nr: 126-72-7 | |
| Tris (1-aziridinyl) phosphine oxide (TEPA) CAS-nr: 5455-55-1 | |
| Hexabromocyclododecane (HBCDD) CAS-nr: 25637-99-4 | |
| Tris (2 chloroethyl) phosphate (TCEP) CAS-nr: 115-96-8 | |
| No pigments containing lead, cadmium, tin, chromium VI or mercury have not been actively added or that the measured level does not exceed 0.01% by weight per component. | X |

Surface treatment – white

Doors and fronts are UV-lacquered in white and meet the requirements stated in tables 5 and 6. Safety data sheets according to REACH CLP-regulation no1272/2008 are sent on request. Direct laminate products in beech, birch and oak are not surface treated.

Table 5: Requirements surface treatment

| Requirements | Complies |
|---|----------|
| The content of aromatic solvents / hydrocarbons in surface treatment products / preparations may not exceed 1.0% by weight. | X |
| Surface treatment with preparations containing VOC may have a maximum applied VOC component of 60 g / m ² for office / public / outdoor environment. | X |

Table 6: Hazard class and hazard statement according to Regulation 1272/2008

| Hazard category | Hazard statement according to regulation 1272/2008 | Complies |
|------------------------------|---|----------|
| Acute toxicity | H300, H301, H310, H311, H330, H331 | X |
| Toxic to body organs | H370, H371, H372, H373 | X |
| Carcinogenic | H350, H351 | X |
| Mutagenic | H340, H341 | X |
| Toxic for reproduction | H360, H361, H362 | X |
| Allergenic | H334 | X |
| Dangerous to the environment | H400, H410, H411, H412, H413 If the use of surface treatment products is required for technical reasons, products labelled as dangerous to the environment (H400, H410, H411, H412, H413) may be acceptable if the content of environmentally hazardous substance <14 g/per m ² of surface. | X |
| Hazardous to the ozone layer | H420 | X |

Sustainability

The production

Space is manufactured and assembled in Sweden. Environmental aspects related to production are presented in table 7.

Table 7: The environmental aspects of production

| Environmental aspect | |
|---|--|
| Environmentally classified materials / chemicals | Particularly hazardous chemicals, phasing out substances or priority risk reduction substances are not used. Handling and storage of all chemicals and substances are regulated so emissions to air, ground or water do not occur. |
| Surface coating | During the surface coating the production works actively to minimise the environmental impact through special handling and environmentally adapted colors and solvents. For example excess paint is collected and reused. |
| Emissions air | Emissions below the set license conditions. An air filter cleaner is installed that recycles tempered air which saves energy and reduces emissions to the outdoor environment. |
| Emissions water | Emissions below the set license conditions. Substances that are discharged into wastewater are environmentally friendly and contain no chemicals that the treatment plants cannot handle. Adhesives and varnishes that according to the safety data sheet are considered to pose a risk when released into water are collected in sealed containers and classified and treated as dangerous waste. |
| Waste | Residual material from particleboard is baled and collected for combustion in order to extract energy. TreCe is connected to the Packaging and Newspaper Collection (FTI). Waste is sorted according to the regulations that are based on the FTI and current legislation. Waste and residual products such as glue and oil residues are handled and collected separately. |
| Energy | In order to minimise energy consumption, heating is regulated based on working hours and which workstations are staffed. Investment in a compressor for a sustainable use of electricity resulted in an energy reduction of about 110,000 kWh/year. |
| Production optimization | The production process is optimised to save on materials, resulting in a reduced amount of waste, and to minimise energy consumption. |
| Energy per product | The energy consumption in electricity per product is 8.8 kWh. |

The product

Environmental aspects linked to the product in addition to the materials are presented in table 8.

Table 8: The products aspects

| Aspect | |
|------------------------------|--|
| Packaging | Stretch film and corrugated board used to pack TreCe products are free of chlorine and bleach. The box is glued with wheat or cornstarch. |
| Reuse and restoration | One of our core values is Smart design. This means, among other things, that we look at design from a wider perspective. TreCe products are long lasting. Instead of replacing the whole piece of furniture, there is the option of replacing only a few parts. In this way, our products become sustainable in the long term — a benefit for both you as a user and for the environment. |
| Lifetime and warranty | TreCe provides a 5-year warranty on the entire range and spare parts are available for 10 years. The estimated usage life is from 5 years up to 30 years, depending on the area of use. |
| Recycling | Material recycling leads to a reduction in virgin material extraction and thus reduces carbon dioxide emissions. Hinges and fittings can be melted down and wood-based materials can be recycled for the production of new chipboard which is almost as high quality as virgin. The materials are submitted to recycling facilities, contact your municipality for more information. CombiLine is designed so that the different materials can be separated without special tools. When dismantling, no environmentally hazardous emissions occur. |

Sustainability

Social responsibility

We have ensured that this product is manufactured under good conditions, ie. with regard to social and ethical issues such as working conditions, human rights, labour, environment and corruption. We have sent these requirements to our suppliers and subcontractors, who have each certified that they are followed. A summary is shown in table 9 and applies to the entire manufacture process of a product and its components. The starting point is the UN guidelines on the "Code of Conduct" and Möbelfakta's requirements for Social Responsibility are formulated on the basis of the UN's Global Compact. As well as conditions for social and ethical considerations regarding tax irregularities and illegal labour. The principles are based on below;

- UN Universal Declaration of Human Rights
- Rio Declaration on Environment and Development
- International Labour Organization (ILO) eight core conventions on human and labour rights
- UN Convention against Corruption
- Work environment requirements based on ILO conventions on health and safety

Table 9: Summary requirements for social responsibility

| Requirements | | Complies |
|----------------------------------|--|----------|
| Legislation | The furniture and its components must be manufactured in accordance with national legislation. | X |
| Human Rights | Producers, manufacturers and suppliers operations must comply with human rights. | X |
| Working conditions | Wages, child labour, conditions of employment, working hours, benefits, penalties, freedom of association, forced labour and discrimination. | X |
| Working environment | The company must constantly strive to improve the working environment and workplace safety for its employees. | X |
| Environment | Identify environmental impact, work actively with environmental issues and involve staff. Procedures for law compliance must be in place and followed up. | X |
| Anti-corruption | No form of extortion, corruption, bribery or favoritism to or from employees or organizations is tolerated. | X |
| Tax irregularities /fraud | In addition to the statutory obligations applicable to the employees concerned, shall also anti-labour and tax fraud are applied, such as illegal workers. | X |
| Undeclared/illegal labour | No undeclared/illegal labour shall be hired to preform product manufacturing. | X |

Quality

This product has undergone extensive quality tests for safety and function, as well as surface resistance. The criteria and standards apply to the public environment, school environment and office environment and are shown in tables 10 and 11. The tests were conducted by RISE, a Swedish government research institute that performs testing and certification.

Table 10: Approved user environments

| Product | Approved user environments | Complies |
|---|----------------------------|----------|
| Space-products with Möbelfakta label | Public environment | X |
| | School environment | X |
| | Office environment | X |

Table 11: Standards against which the product has been tested and approved

| Standard | Scope | Complies |
|-----------------------------------|--|----------|
| SS-EN 14073-2:2004 | Office furniture — Storage furniture — Part 2: Safety requirements | X |
| SS-EN 16121:2013 + A1:2018 | Non-domestic storage furniture — Requirements for safety, strength, durability and stability | X |
| SS-EN 12720:2009 + A1:2013 | Surface resistance | X |
| SS 839117 | Public environment / office | |