

CombiLine Worktops

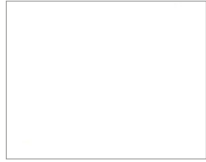


High pressure laminate, 23 mm standard worktops coated with high pressure laminate and 2 mm airtec-lipping*. MFC laminate 22 mm standard worktops have an outer paper layer coated with an impregnated paper and a finish of aluminium particles for extra protection against wear. 2 mm matching airtec-lipping.

Airtec-lipping, also known as laser edging, provides an almost invisible joint between the worktop and edging strip. Thus provides a higher protection against water and heat. This new technology is glue-free, which results in a lower environmental impact.

Note that the colour reproduction in the catalog may differ from physical products.

Worktops High pressure laminate, Formica Collection Colours and Woods



White
(F1040)



Beech
(F2726)



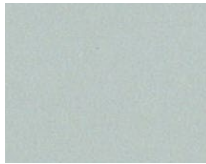
Birch
(F7555)



Oak
(F7603)



Ash
(F1004)



Light grey
(F7927)



Grey
(F7912)



Anthracite
(F2297)



Black
(F2253)

| Name | Colour | Art no |
|-------------------------|------------------|--------|
| Laminate - 390 mm depth | White F1040 | 821003 |
| Laminate - 390 mm depth | Beech F2726 | 822003 |
| Laminate - 390 mm depth | Birch F7555 | 824103 |
| Laminate - 390 mm depth | Oak F7603 | 826003 |
| Laminate - 390 mm depth | Ash F1004 | 828073 |
| Laminate - 390 mm depth | Light grey F7927 | 828013 |
| Laminate - 390 mm depth | Grey F7912 | 828003 |
| Laminate - 390 mm depth | Anthracite F2297 | 828033 |
| Laminate - 390 mm depth | Black F2253 | 828023 |
| Laminate - 600 mm depth | White F1040 | 821001 |
| Laminate - 600 mm depth | Beech F2726 | 822001 |
| Laminate - 600 mm depth | Birch F7555 | 824101 |
| Laminate - 600 mm depth | Oak F7603 | 826001 |
| Laminate - 600 mm depth | Ash F1004 | 828071 |
| Laminate - 600 mm depth | Light grey F7927 | 828011 |
| Laminate - 600 mm depth | Grey F7912 | 828001 |
| Laminate - 600 mm depth | Anthracite F2297 | 828031 |
| Laminate - 600 mm depth | Black F2253 | 828021 |

| Name | Colour | Art no |
|-------------------------|------------------|--------|
| Laminate - 760 mm depth | White F1040 | 821002 |
| Laminate - 760 mm depth | Beech F2726 | 822002 |
| Laminate - 760 mm depth | Birch F7555 | 824102 |
| Laminate - 760 mm depth | Oak F7603 | 826002 |
| Laminate - 760 mm depth | Ash F1004 | 828072 |
| Laminate - 760 mm depth | Light grey F7927 | 828012 |
| Laminate - 760 mm depth | Grey F7912 | 828002 |
| Laminate - 760 mm depth | Anthracite F2297 | 828032 |
| Laminate - 760 mm depth | Black F2253 | 828022 |
| Laminate - 820 mm depth | White F1040 | 821004 |
| Laminate - 820 mm depth | Beech F2726 | 822004 |
| Laminate - 820 mm depth | Birch F7555 | 824104 |
| Laminate - 820 mm depth | Oak F7603 | 826004 |
| Laminate - 820 mm depth | Ash F1004 | 828074 |
| Laminate - 820 mm depth | Light grey F7927 | 828014 |
| Laminate - 820 mm depth | Grey F7912 | 828004 |
| Laminate - 820 mm depth | Anthracite F2297 | 828034 |
| Laminate - 820 mm depth | Black F2253 | 828024 |

Note that the colour reproduction in the catalog may differ from physical products.

Worktops MFC laminate



White
(U6458)



Light grey
(U12188)



Anthracite
(U12011)

| Name | Colour | Art no |
|------------------------|-------------------|--------|
| Worktop - 390 mm depth | White U6458 | 829003 |
| Worktop - 390 mm depth | Light grey U12188 | 829103 |
| Worktop - 390 mm depth | Anthracite U12011 | 829203 |
| Worktop - 600 mm depth | White U6458 | 829001 |
| Worktop - 600 mm depth | Light grey U12188 | 829101 |
| Worktop - 600 mm depth | Anthracite U12011 | 829201 |
| Worktop - 760 mm depth | White U6458 | 829002 |
| Worktop - 760 mm depth | Light grey U12188 | 829102 |
| Worktop - 760 mm depth | Anthracite U12011 | 829202 |
| Worktop - 820 mm depth | White U6458 | 829004 |
| Worktop - 820 mm depth | Light grey U12188 | 829104 |
| Worktop - 820 mm depth | Anthracite U12011 | 829204 |

Worktops Veneer



Beech Veneer



Birch Veneer



Oak Veneer

| Name | Colour | Art no |
|-----------------------|--------|--------|
| Veneer - 390 mm depth | Beech | 823003 |
| Veneer - 390 mm depth | Birch | 825003 |
| Veneer - 390 mm depth | Oak | 827003 |
| Veneer - 600 mm depth | Beech | 823001 |
| Veneer - 600 mm depth | Birch | 825001 |
| Veneer - 600 mm depth | Oak | 827011 |
| Veneer - 760 mm depth | Beech | 823002 |
| Veneer - 760 mm depth | Birch | 825002 |
| Veneer - 760 mm depth | Oak | 827012 |
| Veneer - 820 mm depth | Beech | 823004 |
| Veneer - 820 mm depth | Birch | 825004 |
| Veneer - 820 mm depth | Oak | 827014 |

Worktops Rounded corners

Please note preferred radius of all corners when ordering.

| Name | Radius | Art no |
|-----------------|-----------------|--------|
| Rounded corners | Min. radius 100 | 820010 |

High pressure laminate: 23 mm standard work-tops with high pressure laminate and 2 mm matching airtec-lipping.

- Formica Collection Colours
- Formica Collection Woods

MFC laminate: 22 mm standard worktops have an outer paper layer coated with an impregnated paper and a finish of Aluminium particles for extra protection against wear. 2 mm matching airtec lipping.

Veneer: 22 mm clear lacquered beech, birch or oak veneered chip-board with 2 mm solid lipping.

Airtec lipping: Airtec lipping, also known as laser edging, provides an almost invisible joint between the worktop and edging strip. Thus provides a higher protection against water and heat. This new technology is glue-free, which results in a lower environmental impact.

Inserts: Powder coated steel insert, available in white or black.

- Round with diameter 110, 250 or 400 mm.
- Square 250x250 mm or 350x350 mm.
- Slim 340x40 mm.

Lid for insert: Powder coated steel. Available for round inserts with diameters 250 and 400 mm.

Inserts: Stainless steel, integrated ring in worktop

- Round 250 mm in diameter.

Lid for insert: Compact laminate, folded in / integrated into ring, thickness 6 mm

- Round 250 mm in diameter with knob.
- Compact laminate, Formica F2297 (anthracite) alt. F1040 (white).

Contact TreCe if you want worktops in other high-pressure materials or other materials such as Valchromat.

Specifications

CombiLine

CombiLine

MFC laminated and lacquered surfaces within CombiLine have a chip core, with the exception of some shelves. Back, frame, doors and edge strips have the same colour/wood as other parts as standard, unless otherwise stated.

Frame

Thickness 19 mm, 0.8 mm straight ABS-lipping.

- MFC laminate white, beech, birch and oak.
- Lacquered available in any NCS-colour.

Back

Thickness 12 mm, laminate inside and outside.

Plinth

Every module has its own front and back plinth with 4 adjustable feet (does not apply to recycling units with loading ramps). Plinth 157 mm. Can be replaced with;

- Bottom plate with adjustable stainless steel legs, height 157 mm.
- Bottom plate with lockable wheels, height 104 mm.

Doors

Thickness 16 mm, 2 mm straight ABS-lipping.

- White lacquered UV-treated MFC laminate (NCS S 0500-N), or MFC laminate in beech/birch/oak.
- Lacquered in any NCS colour.
- Self closing concealed hinges with integrated soft closing (does not apply to products with aximat hinges with 180° opening).
- Single doors are right-hung as standard.

Drawer fronts

Drawer front, low: 173 mm

Drawer front, high: 349 mm

Thickness 16 mm, 2 mm straight ABS-lipping.

- White lacquered UV treated MFC laminate (NCS 0500-N) and MFC laminate in beech/birch/ oak.
- Lacquered available in any NCS-colour.

Drawers

Drawers with depth 570 mm have soft closing.

- Extension 70%, max 30 kg.
- Extension 100%, max 35 kg (excl. recycling units).
- Extension 100%, max 65 kg.

Shelves

All shelves are adjustable and mounted with milled-in shelf support. Drill division c/c 32 mm.

- 310 – 605 mm have a chip core.
- 800 – 900 mm have a pine lamellar core.

Recycling unit

MDL60/MD60/MDH60/MD65/MD70

The bottom plate is equipped with an access ramp in stainless steel.

- Doors with aximat hinges for 180 degree opening for easy access to recycling containers.

Mail shelves

Adjustable with pull-out function and mounting strip, subdivision c/c 96 mm.

- Mail shelves in acrylic have integrated name slots.
- Mail shelves in powder coated steel white or black are available as an addition.

Steel doors mail sorting

White powder coated steel. Shelves inside in the same material as frame, 19 mm.

- Including lock and 2 keys with individual lock number.
- Inlet 22 mm. Open door gives a free space of 90 mm.

Wall modules

White lacquered mounting strip in steel is included for all wall modules.

Lock types

Cabinets locks, padlock fittings, code locks and RFID-locks (EM & Mifare).

Fitting pieces /Cover panels

Available as accessories in the same colour/material as frame. Width, height and depth adapted to your requirements.

Handles

Stainless steel bow handles as standard, if you would like black or white handles, please not on order.

- Standard handles c/c 128 mm.
- Grip handles 40 mm.

Work tops

High pressure laminate: 23 mm standard work-tops with high pressure laminate and 2 mm matching airtec-lipping.

- Formica Collection Colours
- Formica Collection Woods

MFC laminate: 22 mm standard worktops have an outer paper layer coated with an impregnated paper and a finish of Aluminium particles for extra protection against wear. 2 mm matching airtec-lipping.

Veneer: 22 mm clear lacquered beech, birch or oak veneered chipboard with 2 mm solid lipping.

Airtech-lipping: Airtec-lipping, also known as laser edging, provides an almost invisible joint between the worktop and edging strip. Thus provides a higher protection against water and heat. This new technology is glue-free, which results in a lower environmental impact.

Inserts: Powder-coated steel insert, available in white or black.

- Round with diameter 110, 250 or 400 mm.
- Square 250x250 mm or 350x350 mm.
- Slim 340x40 mm.

Lid for insert: Powder-coated steel.

Available for round inserts with diameters 250 and 400 mm.

Inserts: Stainless steel, integrated ring in worktop

- Round 250 mm in diameter.

Lid for insert: Compact laminate, folded in / integrated into ring, thickness 6 mm

- Round 250 mm in diameter with knob.
- Compact laminate, Formica F2297 (anthracite) alt. F1040 (white).

General info

Mounting

All modules are factory mounted. Worktops/ Cover panels/Top covers are mounted on site.

Warranty

We provide a 5 year factory warranty on CombiLine. Other products, contact TreCe.

Cabinet locks

Robust cabinet locks with master key system, individual numbers with 2 keys as standard. Identical locks available to addition.

Contact TreCe for customization of selected product.