

CombiLine

Printer cabinet

Design | TreCe

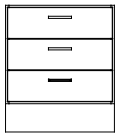


Printer cabinet in an ergonomic height which can easily be combined with other storage furniture. Standard height: 704 mm.

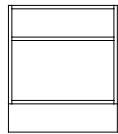
Create your own combination. Choose between different modules, open, with doors or with drawers. Stainless steel handles included as standard.

CombiLine Printer cabinet

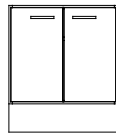
Max 30 kg/drawer



SD60/3L
605x704x570

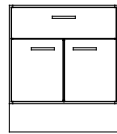


SDÖ60
605x704x570

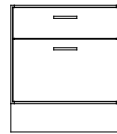


SDS60
605x704x570

Max 30 kg/drawer Max 30 kg/drawer



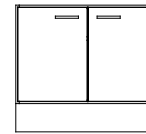
SD60/1L
605x704x570



SD60/2L-30
605x704x570

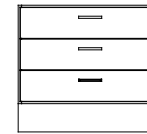


SDÖ80
800x704x570



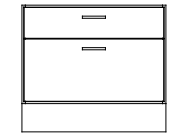
SDS80
800x704x570

Max 30 kg/drawer



SD80/3L
800x704x570

Max 30 kg/drawer



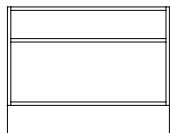
SD80/2L-30
800x704x570

Width 605 mm, Height 704 mm, Depth 570 mm

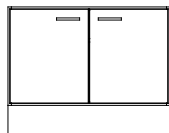
Name	White	NCS	Beech	Birch	Oak
SD60/3L	821721	829721L	823721	825721	827721
SDÖ60	821722	829722L	823722	825722	827722
SDS60	821724	829724L	823724	825724	827724
SD60/1L	821723	829723L	823723	825723	827723
SD60/2L-30	821725	829725L	823725	825725	827725

Width 800 mm, Height 704 mm, Depth 570 mm

Name	White	NCS	Beech	Birch	Oak
SDÖ80	821522	829522L	823522	825522	827522
SDS80	821524	829524L	823524	825524	827524
SD80/3L	821525	829525L	823525	825525	827525
SD80/2L-30	821526	829526L	823526	825526	827526



SDÖ90
900x704x570



SDS90
900x704x570

Width 900 mm, Height 704 mm, Depth 570 mm

Name	White	NCS	Beech	Birch	Oak
SDÖ90	821822	829822L	823822	825822	827822
SDS90	821824	829824L	823824	825824	827824



Stainless steel handles are standard. If you'd prefer black or white, please let us know when ordering. Legs, wheels and drawers can be found on page 102–103 in our catalog. Worktops on page 98.

CombiLine

MFC laminated and lacquered surfaces within CombiLine have a chip core, with the exception of some shelves. Back, frame, doors and edge strips have the same color/wood as other parts as standard, unless otherwise stated.

Frame

Thickness 19 mm, 0.8 mm straight ABS-lipping.

- MFC laminate white, beech, birch and oak.
- Lacquered available in any NCS-color.

Back

Thickness 12 mm, laminate inside and outside.

Plinth

Every module has its own front and back plinth with 4 adjustable feet (does not apply to recycling units with loading ramps).

Plinth height 157 mm. Can be replaced with;

- Bottom plate with adjustable stainless steel legs, height 157 mm.
- Bottom plate with lockable wheels, height 104 mm.

Doors

Thickness 16 mm, 2 mm straight ABS-lipping.

- White lacquered UV-treated MFC laminate (NCS S 0500-N), or MFC laminate in beech/birch/oak.
- Lacquered in any NCS color.
- Self closing concealed hinges with integrated soft closing (does not apply to products with aximat hinges with 180° opening).
- Single doors are right-hung as standard.

Drawer fronts

Thickness 16 mm, 2 mm straight ABS-lipping.

- White lacquered UV treated MFC laminate (NCS 0500-N) and MFC laminate in beech/birch/ oak.
- Lacquered available in any NCS-color.

Drawers

Drawers with depth 570 mm have soft closing.

- Extension 70%, max 30 kg.
- Extension 100%, max 35 kg (excl. recycling units).
- Extension 100%, max 50 kg.

Shelves

All shelves are adjustable and mounted with milled-in shelf support.

Drill division c/c 32 mm.

- 310 – 605 mm have a chip core.
- 800 – 900 mm have a pine lamellar core.

Recycling unit

MDL60/MD60/MDH60/MD65/MD70

The bottom plate is equipped with an access ramp in stainless steel.

- Doors with aximat hinges for 180 degree opening for easy access to recycling containers.

Mail shelves

Adjustable with pull-out function and mounting strip, subdivision c/c 96 mm.

- Mail shelves in acrylic have integrated name slots.
- Mail shelves in powder coated steel white or black are available as an addition.

Steel doors mail sorting

White powder coated steel. Shelves inside in the same material as frame, 19 mm.

- Including lock and 2 keys with individual lock number.
- Inlet 22 mm. Open door gives a free space of 90 mm.

Wall modules

White lacquered mounting strip in steel is included for all wall modules.

Lock types

Cabinets locks, padlock fittings, code locks and RFID-locks (EM & Mifare).

Fitting pieces /Cover panels

Available as accessories in the same color/material as frame. Width, height and depth adapted to your requirements.

Handles

Stainless steel bow handles as standard, if you would like black or white handles, please not on order.

- Standard handles c/c 128 mm.
- Grip handles 40 mm.

General info

Mounting

All modules are factory mounted Worktops/Cover panels/Top covers are mounted on site.

Warranty

We provide a 5 year factory warranty on CombiLine. Other products, contact TreCe.

Cabinet locks

Robust cabinet locks with master key system, individual nr. with 2 keys as standard. Identical locks available to addition.

Contact TreCe for customization of selected product.

Sustainability

CombiLine



Quick info.

Content	Certification TreCe	Certification TreCe
Environment, quality & social aspects	ISO 9001:2015	ISO 14001:2015
Country of manufacture	Certification product	Approved user environments
Sweden	Möbelfakta	Offices, public spaces & schools

Wood

Particle boards in white, beech, birch and oak meets the requirements regarding wood, see Table 1. No wood-based materials are used that origin from forest environments with high biological or social values. TreCe has ensured traceability of wood-based materials, and that the materials origins from documented and legal forestries.

Table 1: Requirements wood

Requirements	Complies
The wood in the product is traceable and come from legal forestries.	X
The wood complies with the requirements for formaldehyde emission requirements according to E1.	X

Metal

Fittings such as hinges, screws and handles for-fill the requirements in Table 2.

Table 2: Requirements metal

Requirements	Complies
Surface treatment must not contain lead or cadmium	X
Aromatic hydrocarbons are not actively added and should not be included in preparations / formulations according to REACH Appendix XVII and KIFS 2005:7.	X
Furniture/products should not be surface treated with products/formulations that are labeled as dangerous according to KIFS 2005:7, CLP 1272/2008 or Regulation 790/2009.	X
The product must not have active addition of or have passivation of metal surfaces with chromium VI. The exception are small fitting corresponding to <5% by weight, for example hinges or fittings.	X

Plastic

Plastic parts such as edgings, fittings and post shelves meet the requirements in Table 3. For example, the post shelf is marked according to ISO 11469 with a stamp. The stamp shows the type of plastic and thus makes it possible to recycle and reuse the material.

Table 3: Requirements plastic

Requirements	Complies
Plastic parts >50 grams are permanently marked according to ISO 11469	X
Free from PVC (polyvinyl chloride)	X
Free from plasticizers containing phthalates -DEHP Di (2-ethylhexyl) phthalate -DBP (dibutyl phthalate) -BBP (benzyl butyl phthalate)	X
The following flame retardants have not been actively added or their maximum content amounts to 0.1% by weight measured value.	X
Polybrominated biphenyls (PBBs)	CAS-nr: 59536-65-1
Decabromodiphenyl ether (dekaBDE)	CAS-nr: 1163-19-5
Pentabromodiphenylether (pentaBDE)	CAS-nr: 32534-81-9
Oktabromodiphenylether (oktaBDE)	CAS-nr: 32536-52-0
Tris (2,3-dibromopropyl) phosphate (TBPP)	CAS-nr: 126-72-7
Tris (1-aziridinyl) phosphine oxide (TEPA)	CAS-nr: 5455-55-1
Hexabromocyclododecane (HBCDD)	CAS-nr: 25637-99-4
Tris (2 chlorethyl) phosphate (TCEP)	CAS-nr: 115-96-8
No pigments containing lead, cadmium, tin, chromium VI or mercury have not been actively added or their content is max. 0.01% by weight measured value per part.	X



Adhesives

Adhesives that are used contain less than 10% VOC (vapor pressure > 0,01kPa*) and less than 0.2% free formaldehyde, see Table 4.

Table 4: Requirements adhesives

Requirements	Complies
Adhesives used in the manufacture of furniture or components for furniture may contain a maximum of 10% by weight VOC.	X
Adhesives used in the manufacture of furniture or components for furniture may contain a maximum of 0.2% by weight of free formaldehyde.	X

Surface treatment - white

Doors and fronts are UV-lacquered in white and meet the requirements stated in Tables 5 and 6. Safety data sheets are sent on request. Direct laminate products in beech, birch and oak are not surface treated.

Table 5: Requirements surface treatment

Requirements	Complies
The content of aromatic solvents / hydrocarbons in surface treatment products / preparations may not exceed 1.0% by weight.	X
Surface treatment with preparations containing VOC may have a maximum applied VOC component of 60 g / m ² for office / public / outdoor environment.	X

Table 6: Hazard class and hazard statement according to Regulation 790/2009.

Hazard category	Hazard statement according to regulation 790/2009	Complies
Acute toxicity	H300, H301, H310, H311, H330, H331	X
Toxic to body organs	H370, H371, H372, H373	X
Carcinogenic	H350, H351	X
Mutagenic	H340, H341	X
Toxic for reproduction	H360, H361	X
Allergenic	H334	X
Dangerous to the environment	H400, H410, H411, H412, H413 If the use of surface treatment products is required for technical reasons, products labelled as dangerous to the environment (H400, H410, H411, H412, H413) may be acceptable if the content of environmentally hazardous substance <14 g/per m ² of surface.	X

The production

CombiLine is manufactured and assembled in Sweden. Environmental aspects related to production are presented in Table 7.

Table 7: The environmental aspects of production.

Environmental aspect

Environmentally classified materials / chemicals	Particularly hazardous chemicals, phasing out substances or priority risk reduction substances are not used. Handling and storage of all chemicals and substances are regulated so emissions to air, ground or water do not occur.
Surface coating	During the surface coating the production works actively to minimize the environmental impact through special handling and environmentally adapted colors and solvents. For example excess paint is collected and reused.
Emissions air	Emissions below the set license conditions. An air filter cleaner is installed that recycles tempered air which saves energy and reduces emissions to the outdoor environment.
Emissions water	Emissions below the set license conditions. Substances that are discharged into wastewater are environmentally friendly and contain no chemicals that the treatment plants cannot handle. Adhesives and varnishes that according to the safety data sheet are considered to pose a risk when released into water are collected in sealed containers and classified and treated as dangerous waste.
Waste	Residual material from particleboard is baled and collected for combustion in order to extract energy. TreCe is connected to the Packaging and Newspaper Collection (FTI). Waste is sorted according to the regulations that are based on the FTI and current legislation. Waste and residual products such as glue and oil residues are handled and collected separately.
Energy	In order to minimize energy consumption, heating is regulated based on working hours and which workstations are staffed. Investment in a compressor for a sustainable use of electricity resulted in an energy reduction of about 110,000 kWh/year.
Production optimization	The production process is optimized to save on materials, resulting in a reduced amount of waste, and to minimize energy consumption.
Energy per product	The energy consumption in electricity per product is 8.8 kWh.

The product

Environmental aspects linked to the product in addition to the materials are presented in Table 8.

Table 8: The products aspects.

Aspect

Packaging	Stretch film and corrugated board used to pack TreCe products are free of chlorine and bleach. The box is glued with wheat or cornstarch.
Reuse and restoration	One of our core values is Smart design. This means, among other things, that we look at design from a wider perspective. TreCe products are long lasting. Instead of replacing the whole piece of furniture, there is the option of replacing only a few parts. In this way, our products become sustainable in the long term - a benefit for both you as a user and for the environment.
Lifetime and warranty	TreCe provides a 5-year warranty on the entire range and spare parts are available for 10 years. The estimated usage life is from 5 years up to 30 years, depending on the area of use.
Recycling	Material recycling leads to a reduction in virgin material extraction and thus reduces carbon dioxide emissions. Hinges and fittings can be melted down and wood-based materials can be recycled for the production of new chipboard which is almost as high quality as virgin. The materials are submitted to recycling facilities, contact your municipality for more information. CombiLine is designed so that the different materials can be separated without special tools. When dismantling, no environmentally hazardous emissions occur.

Social responsibility

We have ensured that this product is manufactured under good conditions, ie. with regard to social and ethical issues such as working conditions, human rights, labor, environment and corruption. We have sent these requirements to our suppliers and subcontractors, who have each certified that they are followed. A summary is shown in Table 9 and applies to the entire manufacture process of a product and it's components.

The minimum requirement for all suppliers is the UN guidelines on the "Code of Conduct" and Möbelfaktas' requirements for Social responsibility, which are formulated from the UN Global Compact with principles based on below;

- UN Universal Declaration of Human Rights.
- Rio Declaration on Environment and Development.
- International Labor Organization (ILO) eight core conventions on human and labor rights.
- UN Convention against Corruption.
- Work environment requirements based on ILO conventions on health and safety

Table 9: Requirements for social responsibility.

Requirements		Complies
Legislation	The furniture and its components must be manufactured in accordance with national legislation.	X
Human Rights	Producers, manufacturers and suppliers operations must comply with human rights.	X
Working conditions	Wages, child labor, conditions of employment, working hours, benefits, penalties, freedom of association, forced labor and discrimination.	X
Working environment	The company must constantly strive to improve the working environment and workplace safety for its employees.	X
Environment	Identify environmental impact, work actively with environmental issues and involve staff. Procedures for law compliance must be in place and followed up.	X
Anti-corruption	No form of extortion, corruption, bribery or favoritism to or from employees or organizations is tolerated.	X

Quality

This product has undergone extensive quality tests for safety and function, as well as surface resistance. The criteria and standards apply to the public environment, school environment and office environment and are shown in Tables 10 and 11. The tests were conducted by RISE, a Swedish government research institute that performs testing and certification.

Table 10: Approved user environments.

Product	Approved user environments.	Complies
CombiLine-products with Möbelfakta label	Public environment	X
	School environment	X
	Office Environment	X

Table 11: Standards against which the product has been tested and approved.

Standard	Scope	Complies
SS-EN 14073-2:2004	Office furniture - Storage furniture - Part 2: Safety requirements	X
SS-EN 16121:2013 + A1:2018	Non-domestic storage furniture - Requirements for safety, strength, durability and stability	X
SS-EN 12720:2009 + A1:2013 SS 839117	Surface resistance Public environment / office Requirements Category 1	X