



 TRECE



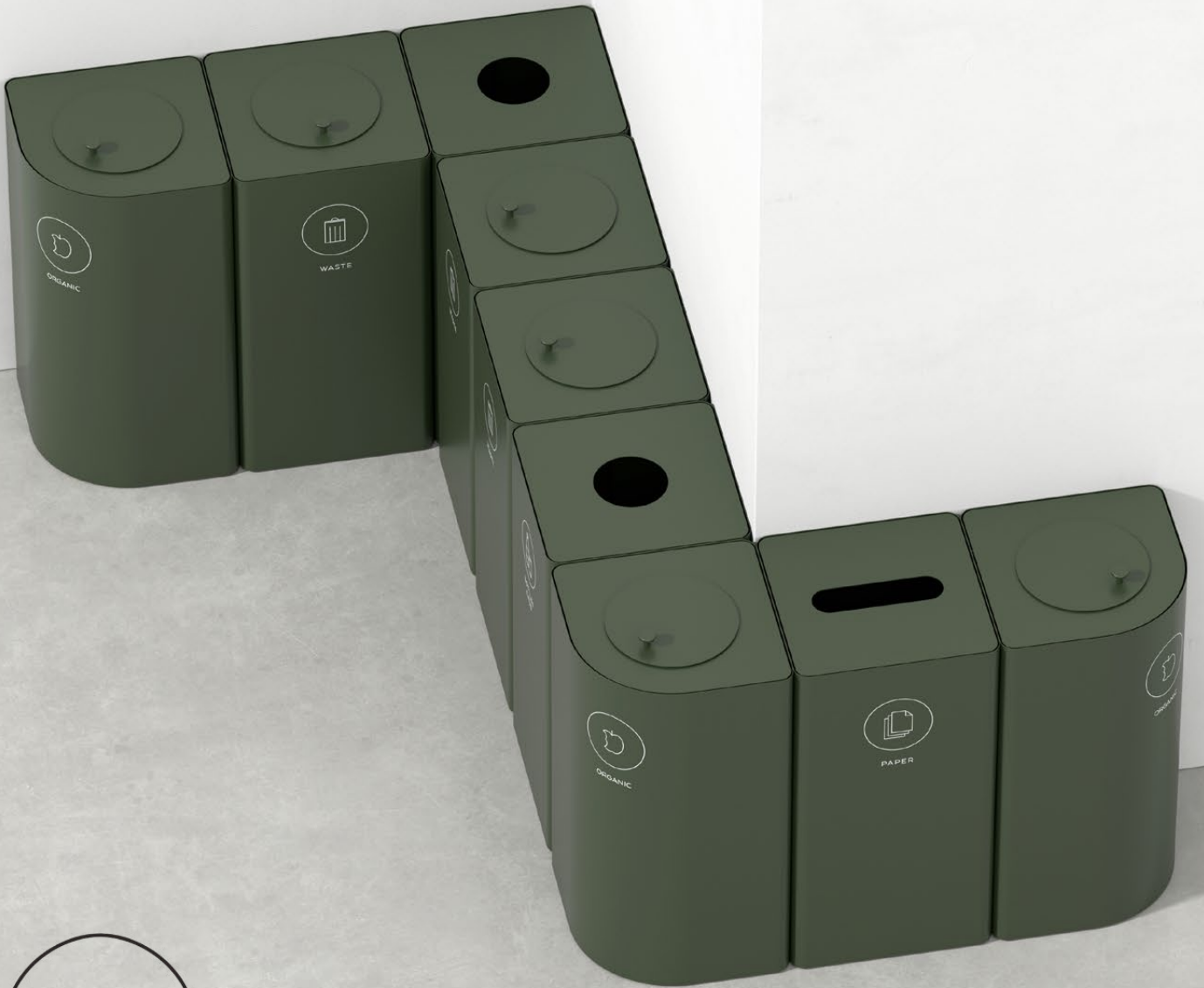
Our journey in the circular transition has begun.

We want to become part of a world in balance.

That's why we're working on creating the next generation of storage and recycling.

For us this means developing products with eco-respect, responsible supply chains and circular life.

KLOSS recycling	4
KLOSS Small recycling	6
KLOSS Mini recycling	8
Etage recycling	12
Birdie recycling	14
Hightower recycling	16
Popsicle recycling	18
Kite recycling	20
Kite Mini recycling	22
Ridge recycling	24
Cloud recycling	26
Hold recycling	28
Hold Mini recycling	30
Soft media unit	32
CombiLine storage	34
Space personal storage	36
Space public storage	38
Space cabinet & recycling unit	40
Office family personal storage	42



INTERIOR
DESIGN



GERMAN
DESIGN
AWARD
WINNER
2024



reddot winner 2024

archiproducts®
AWARDS
WINNER

KLOSS recycling

Design | Kauppi & Kauppi

KLOSS recycling system reflects our need to separate and organise, putting the right materials in the right bins for recycling. What we used to define as waste is now a material resource that can be reused. All interiors and situations have different conditions, with KLOSS there are almost endless possibilities to build whatever form and function is needed, in any RAL colour you wish. Creative and playfull recycling units for all environments.

"Modularity" is the basic idea and design essence of KLOSS. A vast and highly flexible, connectable modular system for recycling. Three different modules, made of steel, provide endless possibilities and shapes. Choice of modules and configuration, together with the choice of colour, top, lid and accessories - gives the recycling unit its final shape and expression.

Sustainability and materials

- The modules are made of 20 % recycled steel with long durability.
- Circular product: modules can be disassembled and replaced, refreshed, repaired, refurbished and recycled.
- The steel body is made in parts that are joined together by the click method and are detachable for renovation.
- Container with base insert allows the use of paper bag.
- Container and base insert is made of 100 % recycled ABS plastic.
- The rubber inlet is made of black bio-based ECO EPDM rubber.
- KLOSS can hold up to 62-68 L

DIMENSIONS: Width 360 mm, 14,1" | Height 700 mm, 27,5" | Depth 360 mm, 14,1" | **Frame/Top/Wall bracket/Knob/Leg** Powder coated sheet steel
Lid Powder coated steel sheet | **Container & Base insert** 100% recycled ABS plastic | **Rubber insert:** Black ECO EPDM rubber



KLOSS Small recycling

Design | Kauppi & Kauppi

KLOSS Small and Mini grows the KLOSS system with two new smaller module sizes and several new features - elevating itself from a modular collection to a larger recycling furniture infrastructure.

The new addition KLOSS Small enable waste sorting everywhere - from large spaces and interiors to smaller and closer situations. The smaller KLOSS sizes fit well into any context where sorting modules are needed, even where space may be limited or where the bins need to harmonise with the overall interior style. KLOSS Small can blend in or characterise a space depending on the choice of size, composition, colour and accessories. KLOSS Small can either be wall-mounted individually or placed in rows on narrow steel frames, reflecting the options available for the larger KLOSS trash bins as well.

Sustainability and materials

- The modules are made of 20 % recycled steel with long durability.
- Circular product: modules can be disassembled and replaced, refreshed, repaired, refurbished and recycled.
- The steel body is made in parts that are joined together by the click method and are detachable for renovation.
- Container with base insert allows the use of paper bag.
- Container and base insert is made of 100 % recycled ABS plastic.
- The rubber inlet is made of black bio-based ECO EPDM rubber.
- KLOSS Small can hold up to 32-35 L

DIMENSIONS: Width 280 mm, 11,1" | Height 450 mm, 17,7" | Depth 280 mm, 11,1" | **Frame/Top/Wall bracket/Knob/Leg/Leg stand** Powder coated sheet steel | **Lid** Powder coated steel sheet | **Container & Base insert** 100% recycled ABS plastic | **Rubber insert:** Black ECO EPDM rubber







KLOSS Mini recycling

Design | Kauppi & Kauppi

KLOSS Mini and Small grows the KLOSS system with two new smaller module sizes. and several new features - elevating itself from a modular collection to a larger recycling furniture infrastructure.

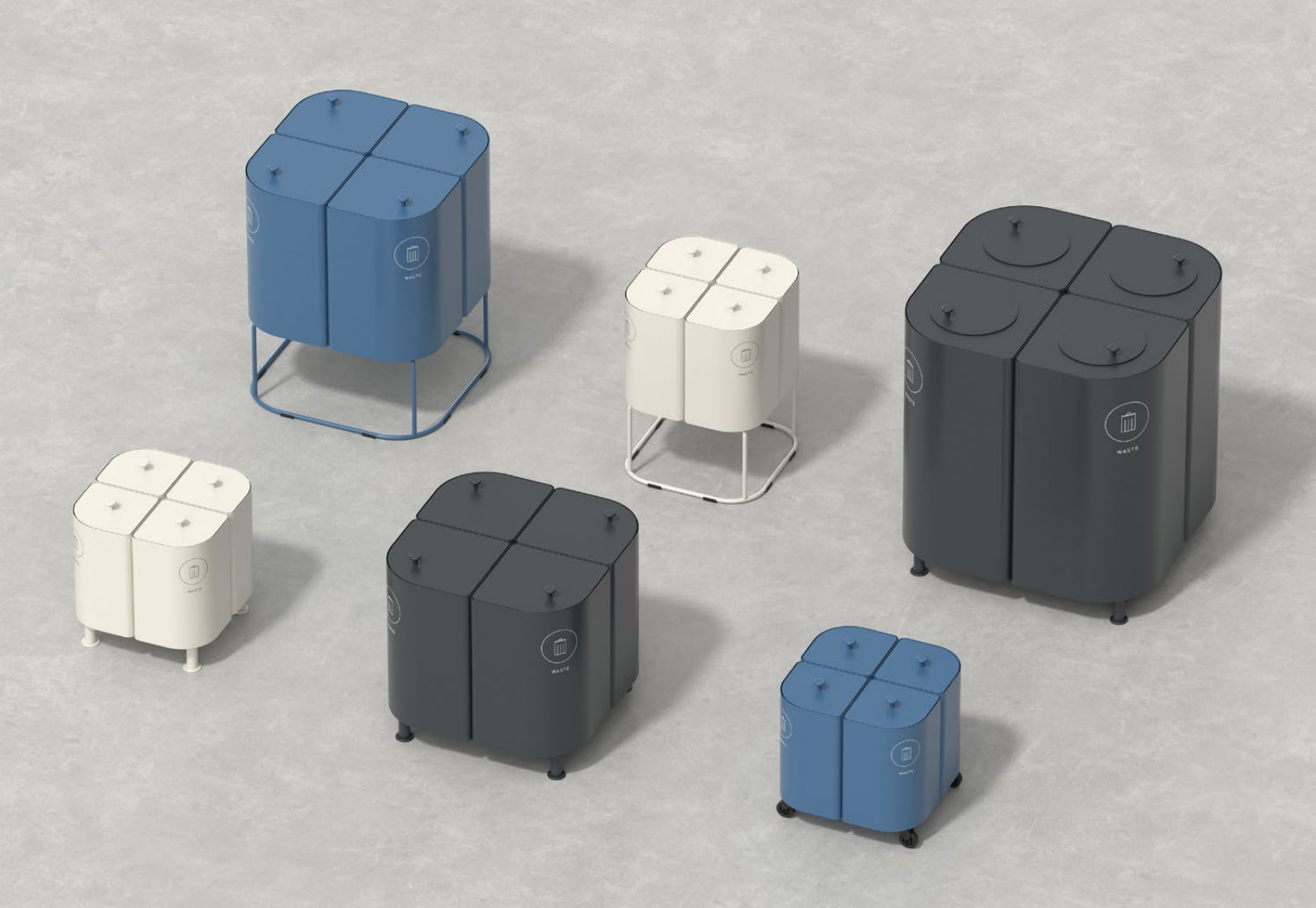
The new addition KLOSS Mini enable waste sorting everywhere - from large spaces and interiors to smaller and closer situations. The smaller KLOSS sizes fit well into any context where sorting modules are needed, even where space may be limited or where the bins need to harmonise with the overall interior style. KLOSS Mini can blend in or characterise a space depending on the choice of size, composition, colour and accessories. KLOSS Mini can either be mounted on the wall individually or placed in rows on narrow steel frames, mirroring the options also available for the larger KLOSS bins.

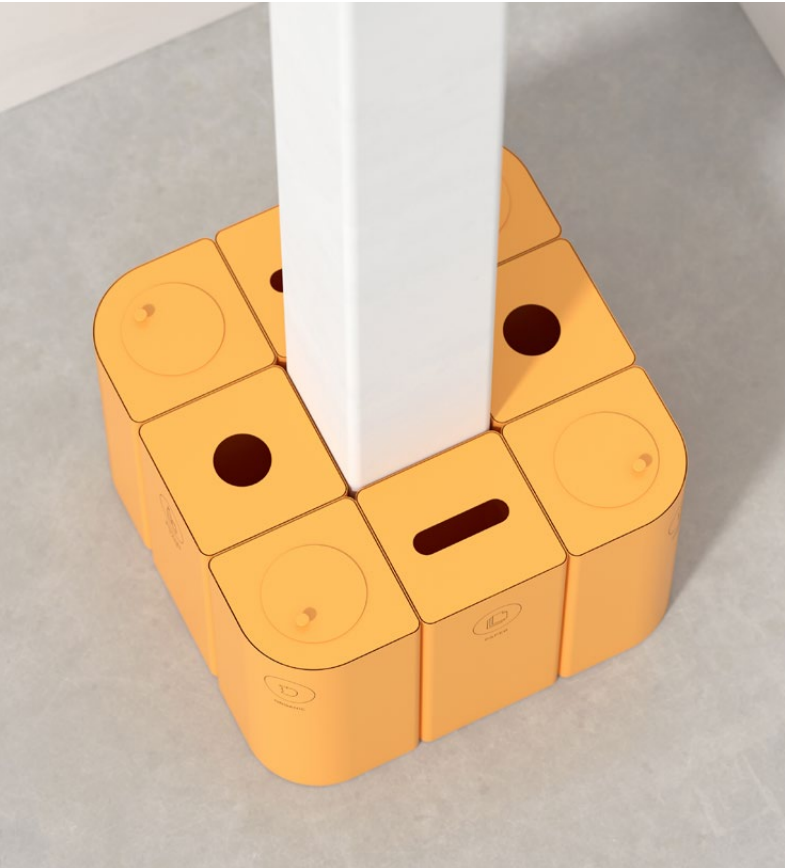
Sustainability and materials

- The modules are made of 20 % recycled steel with long durability.
- Circular product: modules can be disassembled and replaced, refreshed, repaired, refurbished and recycled.
- The steel body is made in parts that are joined together by the click method and are detachable for renovation.
- Container is made of 100 % recycled ABS plastic.
- The rubber inlet is made of black bio-based ECO EPDM rubber.
- KLOSS Mini can hold up to 11-13 L

DIMENSIONS: Width 200 mm, 7,8" | Height 320 mm, 12,6" | Depth 200 mm, 7,8" | **Frame/Top/Wall bracket/Knob/Leg/Leg stand** Powder coated sheet steel | **Lid** Powder coated steel sheet | **Container** 100% recycled ABS plastic | **Rubber insert:** Black ECO EPDM rubber







Etage recycling

Design | Bernstrand & Borselius

Etage is unique with its elegant design and multiple levels that efficiently utilize floor space in small areas.

The frame of Etage is made of oak veneer, bent to its shape, with its standard options - mocca stain, oak, or white stain (Etage are also available in painted NCS colour of your choice) - providing a beautiful contrast to the molded inlets in black or white. These inlets are simple to clean and can be easily replaced and recycled.

Etage is now also available as a top-loaded waste sorting furniture. This makes it easy to sort waste and grow air-purifying plants indoors.

Behind the door, there are containers and planters made of 80 % recycled plastic that are easy to empty and keep the garbage bags in place while protecting the fine wooden pillar from any potential leaks.

Sustainability and materials

- Inlets made of 87 % bio-based PLA plastic (sugar cane). Can be easily replaced and recycled.
- Containers and planter made of 80 % recycled ABS plastic.
- Frame in bentwood, Oak veneer FSC 100 %.

Ø: 440 mm, 17,3" | **Etage 1730:** 1730 mm, 68,1" | **Etage 1180:** 1180 mm, 46,5" | **Etage 870:** 870 mm, 34,3" | **Etage 570:** 570 mm, 22,4"
Frame Bentwood in lacquered oak veneer. | **Inlets:** 87% bio-based PLA-plastic (sugar cane). | **Containers and planters** ABS-plastic, 80% recycled.



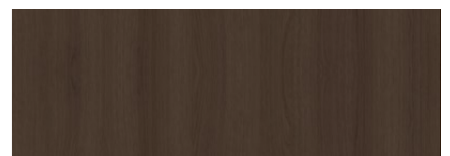
Etage Colours



Oak



White stained



Mocha stained



GERMAN
DESIGN
AWARD
WINNER
2024

ICD 2
NIC 0
AWA 2
RDS 4

INTERIOR
PRODUCTS

best of best



2016

**EUROPEAN
PRODUCT
DESIGN
AWARD™**



Birdie recycling

Design | Studio Doms

Birdie is a flexible recycling piece made of resistant Swedish steel. Available in 11 standard colours and delivered with specially designed symbols for easy sorting.

Birdie is available in two sizes and holds 43 L, (Birdie 500) and 63 L, (Birdie 750), both have soft closing lids. Inlet/ring is made of stable quality plastic and is labeled for recycling according to ISO 11469.

Birdie consists of Swedish steel of which 20% is recycled material, and lacquered with powder coating, which lowers the environmental impact on the product. Birdie is available as floor standing and wall mounted, with matching wall brackets.

Sustainability and materials

- Frame in powder coated steel made in Sweden, consists of 20 % recycled materials.
- The steel is 100 % recyclable.
- The powder coating is a good environmental choice as no solvents are used.
- The lid inlet is in plastic and marked according to ISO 11469 for recycling. It can easily be removed for cleaning and is dishwasher safe.
- The lid in the closed position prevents odor and works in an upright position as a splash protection. Birdies thought through design makes it easy to empty.

FLOOR: Width 410, 910, and 1410 mm, 16.1", 35.8", 55.5" | **Height** 916 mm, 36" | **Depth** 400 mm, 15.7" | Frame in powder coated steel
WALL: Width 410 mm, 16.1" | **Height** 613 and 863 mm, 24.1" and 34" | **Depth** 500 mm, 19.7" | Lid in powder coated aluminum | Inlet/ring in plastic, marked according to ISO 11469 Inlet/ring removable for cleaning, dishwasher safe



White

Warm Grey

Anthracite

Brilliant blue

Pearl white

Olive

Forest green

Chocolate

Saffron

Old pink

Wine red

Hightower recycling

Design | Jangir Maddadi

Hightower is part of a new range of waste bins designed by Jangir Maddadi. The frame is made of galvanised sheet steel that can be lacquered in our standard colours or any RAL colour. Hightower holds 125 L and is adapted for 85-140 L waste bags.

Legs for Hightower are available in 3 different versions, oak legs, stainless steel legs where both have adjustable feet and then a concrete base with 4 stainless steel legs. The wooden legs are only suitable for indoor use but the other options work well outdoors.

There are inlets on both the front and back. If placed outdoors, we recommend Hightower with a lid for bird protection.

Sustainability and materials

- The frame in powder-coated steel sheet is manufactured in Sweden and consists of 20 % recycled material.
- The steel sheet is 100 % recyclable.
- The powder coating of the frame is a good environmental choice as no solvents are required.



Width 360 mm, 14,1" | **Height** 1142 mm, 44,9" | **Depth** 454 mm, 17,8" | **Frame:** Powder-coated steel. | **Lid:** Stainless steel plate.

Legs: Lacquered wooden legs in oak for indoor use, powder-coated stainless steel legs for indoor and outdoor use and concrete base for outdoor use.



 **GERMAN
DESIGN
AWARD
WINNER
2023**



 GERMAN
DESIGN
AWARD
WINNER
2023



BOTTLES
CANS



WASTE

Popsicle recycling

Design | Jangir Maddadi

Popsicle waste bin is a product designed by Jangir Maddadi. Together with Hightower, it is our first product for outdoor use. Of course, it works just as well indoors

At first glance, the thoughts go to a classic ice cream shape. The frame is made of galvanized sheet steel which can be painted in our standard colours or any RAL colour. The leg stands are available in 3 different designs, depending on how and where you want to place Popsicle. Of course, it is stainless material for outdoor use and Swedish steel sheet for indoor use. There are various alternatives how to anchor Popsicle.

There are inlets on both the front and back. If placed outdoors, we recommend Popsicle with a lid for bird protection.

Sustainability and materials

- The frame in powder-coated steel sheet is manufactured in Sweden and consists of 20 % recycled material and the steel sheet is 100 % recyclable.
- The powder coating of the frame is a good environmental choice as no solvents are required.



Popsicle Shaft 1 with footplate for indoor use.

Popsicle shaft 2 with concrete foot for indoor and outdoor use.

Popsicle with shaft in powder coated stainless steel cast into the ground.

Width 359 mm, 14,1" | **Height** 733 mm, 28,8" | **Depth** 477 mm, 18,7". | **Frame** Powder-coated steel. | **Lid** Stainless steel plate.

Legs Powder coated steel sheet for indoor use or stainless steel sheet with or without concrete base for outdoor use.



White

Warm Grey

Anthracite

Brilliant blue

Pearl white

Olive

Forest green

Chocolate

Saffron

Old pink

Wine red

Kite recycling

Design | Annica Doms

A modulated recycling unit designed by Annica Doms. Awarded the Red Dot Design Award and German Design Award for its innovative form. Designed for modularity in different configurations.

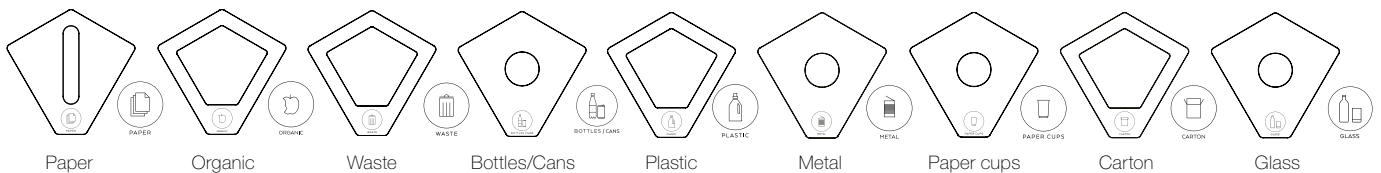
Kite can be placed against the wall or as a free-standing accent in the room. The many possible combinations challenges the imagination and inspires creativity. Lids with eight different designs with varying shapes and screen printed symbols for different types of waste. Kite is available in 11 RAL colours and Kite Raw with lids in three standard colours, white, anthracite and olive grey. Kite holds 70 L, designed for standard bag of 85–125 L.

Sustainability & Material

- Lid in MDF meets the formaldehyde requirements E1 and TSCA Title VI / CARB2. MDF from traceable and controlled woods.
- The frame in powder-coated steel plate is manufactured in Sweden and consists of 20 % recycled material.
- The steel is 100 % recyclable.
- The powder coating of the frame is a good environmental choice as no solvents are required.

Kite Lid

Lids can also be supplemented with locks. Contact TreCe if you want other symbols or text in other languages.



Width 500 mm, 19.7" | **Height** 700 mm, 27.6" | **Depth** 492 mm, 19.4" | **Frame** is made of shock-resistant powder coated steel
Lid in a vacuum foiled MDF, screen-printed symbol.





reddot design award
winner 2012



GERMAN
DESIGN
AWARD
WINNER
2020





Kite Mini recycling

Design | Studio Doms

Kite Mini is an exact copy of Kite, but in a reduced size. This gives a clear "family feeling" and a uniform expression. Kite Mini is intended for smaller spaces like under desks, hotel rooms or smaller conference rooms. There is also a wall mount for Kite Mini, which means that it can be placed on the wall. As single or in pairs to free floor space. Kite Mini is available in 11 RAL colours. Lids in colour white, anthracite or olive grey with 6 different screen printed symbols for recycling. Kite Mini holds 10 L.

Sustainability & Material

- Lid in MDF meets the formaldehyde requirements E1 and TSCA Title VI / CARB2. MDF from traceable and controlled woods.
- The frame in powder-coated steel plate is manufactured in Sweden and consists of 20 % recycled material.
- The steel is 100 % recyclable.
- The powder coating of the frame is a good environmental choice as no solvents are required.
- Base in 100 % recycled ABS plastic, marked for recycling according to ISO 11469.



Width 250 mm, 9.8" | **Height** 355 mm, 13.9" | **Depth** 245 mm, 9.6" | **Frame** Made of shock-resistant powder coated steel (10 L volym). | **Lid** In white or anthracite. Vacuum foiled MDF with screen printed symbol. | **Base** ABS plastic made from 100% recycled material. | **Wall mount** *Right or left*. Wall mount is included in Kite mini wall.



Ridge recycling

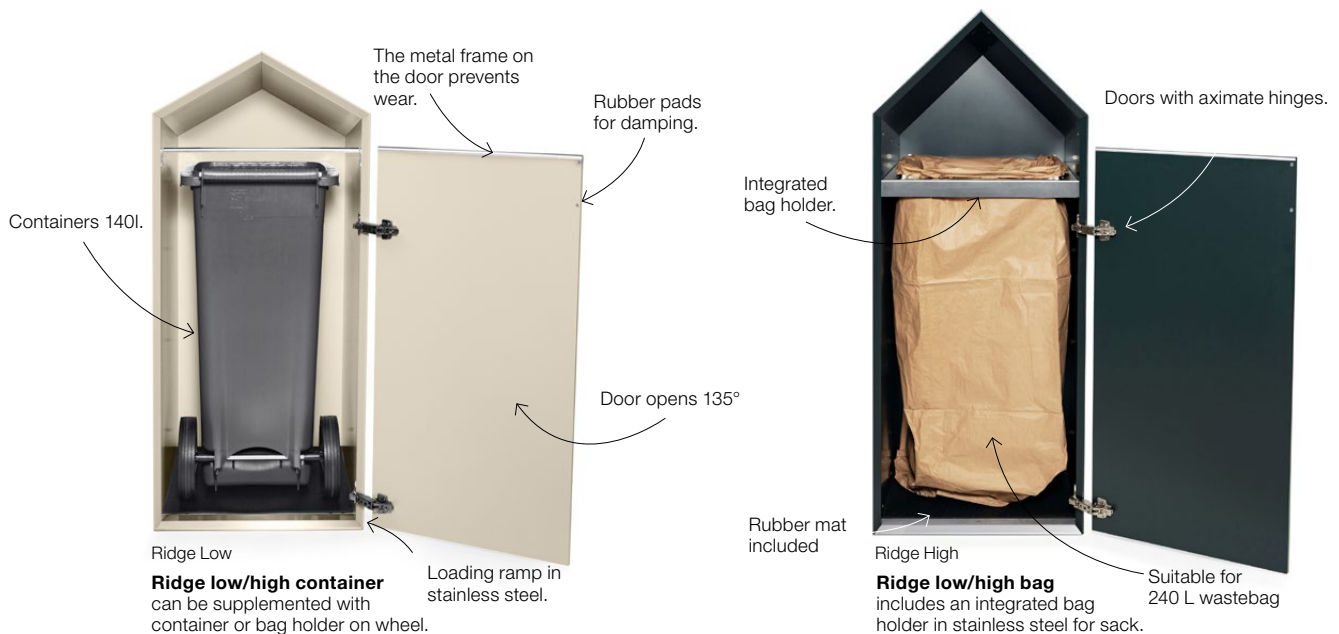
Design | Studio Doms

Ridge, with its special expression, becomes a different and expressive feature in the modern office. It gives the impression of an interior detail, not just a recycling station.

A very stable construction that is built of 22 mm MDF and lacquered in 11 standard colours. Stainless steel ramp for easier access of a 140 L container is not only a practical detail, but also a design-prominent part. Ridge is available in two heights. The difference between Low and High is the slope of the upper part of the frame. Ridge can be ordered with 8 different symbols, depending on the purpose.

Sustainability and materials

- Frame in MDF meets the formaldehyde requirements E1 and TSCA Title VI / CARB2. MDF from traceable and controlled woods.
- Tested according to SS-EN 16121:2013 + A1:2018.
- Requirements for strength, durability and safety.



Width 600 mm, 23.6" | **Height** Ridge High: 1521 mm, 59.8", Ridge Low: 1397 mm, 55" | **Depth** 650 mm, 25.6" | **Bottom/Gables/Tops** 22 mm lacquered MDF
Door/Back 16 mm lacquered MDF | **Plates/scratch protection door/loading ramp** all in stainless | **Rubber mat** Included **Adjustable feet**
Sackholder In stainless steel | **Doors** with aximate hinges.







 GERMAN
DESIGN
AWARD
WINNER
2019



WASTE



BOTTLES
CANS



WASTE



BOTTLES
CANS

Cloud recycling

Design | Ebba Hellberg and Sigrid Ljungström

Cloud is a mobile recycling unit designed to fit into a modern work environment, where flexibility and aesthetics are two key factors. With inlets from both sides, Cloud can be placed against a wall or in the middle of a room. Cloud is available in laminate and lacquered MDF. Doors and backs in powder-coated steel. Cloud is equipped with doors for easy emptying. Doors and backs are equipped with specially designed recycling symbols, and with the possibility to choose colour and labelling, Cloud can be adapted to different types of environments and needs.

White pull-out bag holders are included in the frame. Load capacity per wheel: 80 kg. Black wheels with rubber surface, height: 100 mm. Two of the wheels have a brake. Inlet from two directions, front (door) and rear (back). Fitted lip on the inside of doors lead waste into the bag. Back is fixed. Rubber mats included. Designed for 85–125 L bags.

Sustainability & Material

- The frame in MDF meets the formaldehyde requirements E1 and TSCA Title VI / CARB2. MDF from traceable and controlled woods.
- The frame is painted with water-based lacquer.
- Doors in powder-coated sheet steel are manufactured in Sweden and consist of 20 % recycled material.
- The steel is 100 % recyclable.
- Powder coating is a good environmental choice as no solvents are required. Tested in accordance with SS-EN 16121:2013 and A1:2018.

Width Cloud 2: 787 mm, 31" | **Width Cloud 3:** 1172 mm, 46.1" | **Frame:** Lacquered MDF, thickness 16 mm, 0.63" in 11 standard colours. MFC thickness 16 mm, 0.63" in Pearl white (U15331) or Anthracite (U12011) | **Height:** 1090 mm, 42.9" | **Doors:** Powder coated steel, thickness 0.12" – 11 standard colours (RAL)
Depth: 500 mm, 19.7" | **Capacity/castor:** 80 kg, 176.3 lbs. Black castors with rubber surface. Two of the castors have breaks, and all are turnable.
Castor height: 100 mm, 3.9". | Three white pull-out sack holders are included, fits 85-125L, 22.5-33 gallon bags



Hold recycling

Design | Tengblom

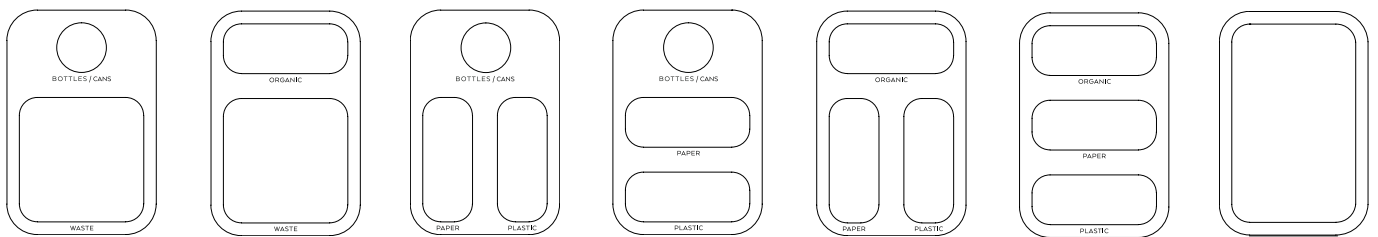
Together with Tengblom architects we have developed the r recycling bin Hold. A collaboration that started with Tengblom seeing a need for a different and functional recycling bin that could meet the needs of smaller spaces. Conference rooms, hotel rooms, smaller meeting rooms, etc. TreCe was contacted and the result was Hold.

A small and functional bin available in 11 RAL colours. 7 different lids with different profiles and text for easy sorting. Adapted bag holder and containers in recycled plastic. Suitable containers are included when ordering lids. Hold holds 20 L.

Sustainability & Material

- Frame in powder coated steel made in Sweden and consists of 20 % recycled materials.
- The steel is 100 % recyclable.
- The powder coating is a good environmental choice as no solvents are used.
- Container bin in 100 % recycled plastic.
- The container bins are dishwasher safe.

Hold Lid



Width 340 mm, 12.6" | **Height** 300 mm, 11.8" | **Depth** 230 mm, 9.7" | **Frame** 1 mm powder coated sheet metal | **Lid** 1.5 mm powder coated sheet metal

Lid profiles 7 hole profiles with clear text for each fraction | **Container bin** 100% recycled plastic, dishwasher safe







Hold Mini recycling

Design | Tengblom

Waste bin Hold Mini – a baby brother to Hold

TreCe has together with Tengbom architects developed the recycling unit Hold. As part of this collaboration, Hold Mini has seen the light of day.

Hold Mini is reduced to a third of its big brother Hold. With only one fraction for sorting, Hold aims to function as a pure waste bin in conference rooms, hotel rooms, smaller meeting rooms etc. A small and functional bin with one type of inlet and a small container.

Hold Mini also has a wall bracket, which means that it can be placed on a wall. The bins container in 100 % recycled plastic, are included when ordering lid.

Sustainability & Material

- Frame in powder coated steel made in Sweden and consists of 20 % recycled materials.
- The steel is 100 % recyclable.
- The powder coating is a good environmental choice as no solvents are used.
- Container bin in 100 % recycled plastic.
- The container bin is dishwasher safe.



Width 250 mm, 9,8" | **Height** 300 mm, 11.8" | **Depth** 135 mm, 5,3" | **Frame** 1 mm powder coated sheet metal | **Lid** 1.5 mm powder coated sheet metal
Container bin 100% recycled plastic, dishwasher safe



Soft media unit

Design | Studio Doms

Storage unit in white pigmented ash veneer or white lacquered MDF. Both models have the same high quality on all sides and comes with robust legs in white pigmented solid ash. Made of carefully selected materials with low environmental impact where all the wood is traceable.

Available in versions of two, three and four storage units. All units are prepared for media storage, with outlets for cables and ventilation.



Prepared for media storage, with outlets for cables.



Soft has a drawer in the drawer for a clean outside and a functional inside.



Distance between door and frame for ventilation.

Width 1246, 1851 and 2456 mm, 49", 72.9" and 96.7" | **Height:** 466 mm, 18.3" | **Depth:** 497 mm, 19.6" | **Fronts** in white pigmented ash veneer or white lacquered MDF (0500 N) **Inside**, both options of Soft have a white ash melamine structure (Egger W1000 ST22) | **Legs** in white pigmented solid ash.



CombiLine storage

Design | TreCe

CombiLine is a space-efficient storage series that make use of all square and cubic meters in the office. Available as standard in white, beech, birch and oak.



Or you can choose freely among all NCS colours. Products in white, beech, birch and oak are approved according to Möbelfakta, a sustainable choice for the environment, made with social responsibility and quality tested. Standard widths: 310 mm, 605 mm, 800 mm and 900 mm.







Space personal storage

Design | TreCe

Flexible modules designed for both personal and general storage in offices and public environments. Space is easy to integrate thanks to its cohesive and thoughtful design. Well-crafted details such as doors in a seamless design, shoe shelves, and benches that complement with fronts create a seamless and stylish atmosphere. This is also reflected in the fact that Space is a sustainable choice, as products in white are approved according to Möbelfakta, made from sustainable materials, manufactured with social responsibility, and quality tested at RISE.



The modules in the Space series are created to fit together, allowing you to let your imagination flow freely when building your unique solution. Choose from various heights of frames and fronts. Frames in standard white or painted in any NCS colour of your choice. Doors in painted MDF, any NCS colour of your choice, oak, and ash laminate with a seamless design. Open frames such as clothing storage, benches, shoe shelves, etc., are available in painted NCS colour of your choice as well as in oak and ash laminate.

Explore the entire Space series, which includes personal and communal storage, wardrobes, seating modules, cabinets, recycling units, and more.

Space has a plinth as standard. For a different look, the plinth can be replaced with lacquered leg frames for an additional charge. The leg frames are available in our 11 standard colours.

Locks and Closures

We offer various types of locks and closures for our doors, such as electronic RFID locks, code locks, cabinet locks, padlock fittings, and push open. For network-based locks, please contact TreCe for personalized advice.

Accessories

For Space storage cabinets, accessories such as movable shelves, clothes rails, mirrors, hooks, mats, the cork box Stuff, and Office products are available.

Customisation

Space can be customized in both material and dimensions if you wish to put your own mark on the furniture. Contact TreCe for advice and a quote.



Space public storage

Design | TreCe

Flexible modules designed for both personal and communal storage in offices and public spaces. Space is easy to integrate thanks to its consistent and thoughtful design. Well-crafted details such as fully covered doors, shoe shelves, and benches with front panels create a seamless and stylish ambience. This is also reflected in the sustainability of Space, as products in white are approved according to Möbelfakta, made from sustainable materials, manufactured with social responsibility, and quality tested at RISE.

The modules in the Space series are created to fit together, allowing your imagination to flow freely as you assemble your unique solution. Choose from various heights for frames and fronts. Frames in standard white or painted in any NCS colour of your choice. Doors in painted MDF, any NCS colour of your choice, oak and ash laminate with a fully covered design. Open frames such as clothing storage, benches, shoe shelves, etc., are available in painted NCS colour of your choice, as well as in oak and ash laminate.



Explore the entire Space series, which includes personal and communal storage, wardrobes, seating modules, cabinets, recycling units, and more.

Space comes with a standard plinth. For a different look, the plinth can be replaced with painted leg frames for an additional charge. Leg frames are available in our 11 standard colours.

Locks and Closures

We offer various types of locks and closures for our doors, such as electronic RFID locks, code locks, cabinet locks, padlock fittings, and push-to-open. For network-based locks, contact TreCe for individual advice.

Accessories

For Space storage cabinets, accessories such as movable shelves, mats, etc., are available.

Customisation

Space can be customized in both material and dimensions if you wish to put your own stamp on the furniture. Contact TreCe for advice and a quote.







Space cabinet & recycling unit

Design | TreCe

Flexible modular design designed for both personal and communal storage in offices and public spaces. Space is easy to integrate thanks to its cohesive and thoughtful design. Well-crafted details such as doors with seamless design, shoe shelves, and benches that enliven with fronts create a seamless and stylish feeling. This is also reflected in the fact that Space is a sustainable choice as it is approved according to Möbelfakta, consists of sustainable materials, is manufactured with social responsibility, and quality-tested at RISE.

The modules in the Space series are designed to fit together, so you can let your imagination run wild as you build your unique solution. Choose between frames in white laminate or lacquered in any NCS colour. Doors in lacquered MDF, any NCS colour, which has a comprehensive design. Fronts are also available in oak and ash laminate. There are five complete modules for waste sorting and eight complete cabinets for the office's common storage.



Explore the entire Space series, including personal and public storage, wardrobes, seating modules, cabinets, recycling units, and more.

Space comes with a standard plinth; for a different expression, the plinth can be replaced with lacquered leg frames for an additional cost. Leg frames are available in our 11 standard colours.

Locks and Closures

We offer various types of locks and closures for doors, such as electronic RFID locks, code locks, cabinet locks, padlock fittings, and push open. For network-based locks, contact TreCe for individual advice.

Accessories

Space counters come with accessories such as movable shelves, bag holders and mats.

Customisation

Space can be customized in both material and dimensions if you wish to put your own mark on the furniture. Contact TreCe for advice and a quote.



Office family personal storage

Design | TreCe

Office is a product family designed to meet the needs of the modern office. Smart solutions that focus on function and with a low environmental impact. Office Backpack, an office bag and backpack for those who want a bag that works both around and outside the office. Organise, store and move your office supplies and laptop with Office Backpack.

Office Bag, a practical and functional office bag for the activity-based office. Several compartments for storing a laptop, binders and other things that you want available, with a practical shoulder strap. Office Sleeve, laptop case suitable for most laptop computers. Office Pouch, a practical small bag for cables, keys, USB-sticks etc.

Made from needled felt with 7 % wool, 93 % polyester, and with details in untreated leather.

Office Backpack



Office Bag



Office Pouch

Office Sleeve



Office bag: WxDxH. 360 x 170 x 310 mm, 14.2" x 12.2" x 6.7" | Needled polyester felt with 7% wool and with genuine leather details | **Inside:** A divider in the middle, pen holder (leather) and accessory pocket, Business card holder in front of the bag (leather) Practical shoulder strap.

Backpack: WxDxH. 310 x 135 x 400 mm, 12.2" x 5.3" x 15.7" | Top opening, Foldable flap, Handles, Magnetic closure with 2 positions, hidden in the lining, Business card holder in leather, Adjustable shoulder straps with details in leather, Push buttons on the side for adjusting the depth, Water resistant bottom, Integrated rain cover hidden in the bottom with zipper. | **Inside:** Holds 15L, Laptop compartment, Pen holder in leather for 3 pens. Pocket for accessories

Computer sleeve S: Fits 13.3" WxH: 250x360 mm, 9.8" x 14.2" | **Computer sleeve M:** Fits 13,3"-14,5" WxH: 280x400 mm, 11" x 15.7"

Computer sleeve L: Fits 14,5"-15,6" WxH: 310x440 mm, 12.2" x 17.3"

Office pouch: WxDxH: 175x160x50, 6.9" x 1.9" x 6.3" | Needled polyester felt with 7% wool and with details in genuine leather. Available in anthracite and light gray.



TRECE
MICHAIL HETICIOS
Karamanlidonou 15, Delfino
11527 Athens, Greece
Phone: +30 210 4122 100
Fax: +30 210 4122 101
Email: info@trece.gr
www.trece.gr

VISIT OUR SHOWROOMS

Norrköping / Head Office

Importgatan 39
P.O. Box 6063, SE-600 06 Norrköping
Sweden
Ph +46 11 21 14 80
info@trece.se / www.trece.se

Stockholm / R40 Center

Rosenlundsgatan 40, SE-118 53 Stockholm
Sweden
Ph +46 8 480 027 55
www.r40center.se

Göteborg / S8

Stampgatan 8, SE-411 03 Göteborg
Sweden
Ph +46 11 21 14 68
www.stampgatan8.se/

Malmö / Djäkne 5

Djäknegatan 5, SE-211 35 Malmö
Sweden
Ph +46 11 21 14 68

Oslo / Skøyen Designcenter

Drammensveien 130 C1, Skøyen NO-0277 Oslo
Norway
Ph +47 23 96 07 22
www.skoyendesigncenter.no/

Helsinki / Eurohela Oy

Meritullinkatu 21, FL-00170 Helsinki
Finland
www.eurohela.fi

Goswell / Nordic Design House

104-110 Goswell Road, London EC1V 7DH
United Kingdom
www.nordicdesignhouse.com



 **TRECE**