

CombiLine Cabinet

Design | TreCe



Space efficient cabinets that utilise all the office space. Create your own combination. Choose between different modules, open, with doors or with drawers. Stainless steel handles included as standard.

Available in two different standard heights 880 and 1057 mm. Available in standard white or lacquered in any NCS colour.

Dimensions: Width x Height x Depth (height incl. plinth). **Frame:** 19 mm. **Front:** 16 mm. **Plinth:** 157 mm.
NCS refers to product lacquered in one optional NCS colour.



Drawer holds 65 kg with 100% expansion.



Folder drawer 2xA4.

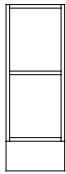


Drawer inserts.

Low drawers with 100% extraction have a maximum load capacity of 35 kg.

High drawers with 100% extraction have a maximum load capacity of 65 kg.

CombiLine Cabinet



DÖ30
312x 880x570



DS30
312x880x570



DL30/4L 100%
312x880x570



HDÖ30
312x1057x570



HDS30
312x1057x570



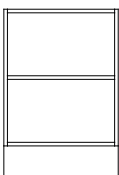
HDL30/4L 100%
312x1057x570

Width 312 mm, Height 880 mm, Depth 570 mm

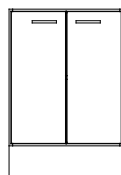
Name	White	NCS	Beech	Birch	Oak
DÖ30	821612	829612L	823612	825612	827612
DS30	821613	829613L	823613	825613	827613
DL30/4L 100%	821610	829610L	823610	825610	827610

Width 312 mm, Height 1057 mm, Depth 570 mm

Name	White	NCS	Beech	Birch	Oak
HDÖ30	821632	829632L	823632	825632	827632
HDS30	821633	829633L	823633	825633	827633
HDL30/4L 100%	821634	829634L	823634	825634	827634



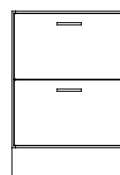
DÖ60
605x880x570



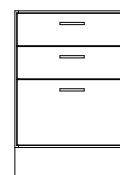
DS60
605x880x570



DL60/4L 100%
605x880x570



DL60/2L 100%
605x880x570



DL60/3L 100%
605x880x570

Width 605 mm, Height 880 mm, Depth 570 mm

Name	White	NCS	Beech	Birch	Oak
DÖ60	821712	829712L	823712	825712	827712
DS60	821713	829713L	823713	825713	827713
DL60/4L 100%	821710	829710L	823710	825710	827710

Width 605 mm, Height 880 mm, Depth 570 mm

Name	White	NCS	Beech	Birch	Oak
DL60/2L 100%	821814	829814L	823814	825814	827814
DL60/3L 100%	821815	829815L	823815	825815	827815

Dimensions: Width x Height x Depth (height incl. plinth). **Frame:** 19 mm. **Front:** 16 mm. **Plinth:** 157 mm.
NCS refers to product lacquered in one optional NCS colour.

CombiLine Cabinet



HDÖ60 605x1057x570
HDS60 605x1057x570
HDL60/4L 100% 605x1057x570
HDL60/2L 100% 605x1057x570

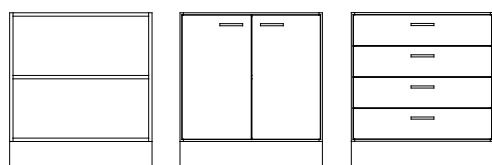
Width 605 mm, Height 1057 mm, Depth 570 mm

Name	White	NCS	Beech	Birch	Oak
HDS60	821733	829733L	823733	825733	827733
HDÖ60	821732	829732L	823732	825732	827732
HDL60/4L 100%	821735	829735L	823735	825735	827735
HDL60/2L 100%	821834	829834L	823834	825834	827834

Low drawers with 100% extraction have a maximum load capacity of 35 kg.

High drawers with 100% extraction have a maximum load capacity of 65 kg.

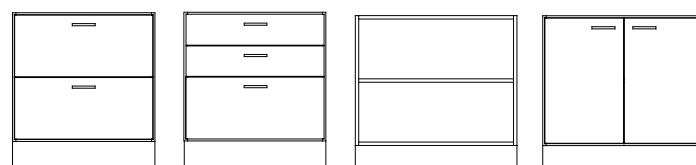
Stainless steel handles are included as standard. If you prefer black or white, please note this in your order.



DÖ80 800x880x570
DS80 800x880x570
DL80/4L 100% 800x880x570

Width 800 mm, Height 880 mm, Depth 570 mm

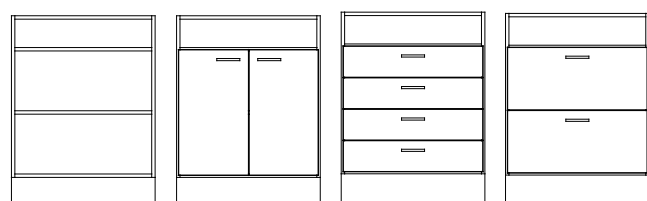
Name	White	NCS	Beech	Birch	Oak
DÖ80	821512	829512L	823512	825512	827512
DS80	821513	829513L	823513	825513	827513
DL80/4L 100%	821510	829510L	823710	825710	827710



DL80/2L 100% 800x880x570
DL80/3L 100% 800x880x570
DÖ90 898x880x570
DS90 898x880x570

Width 800 mm, Height 880 mm, Depth 570 mm

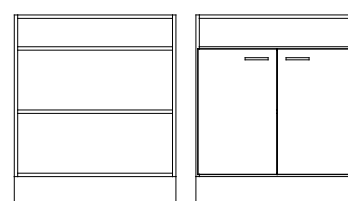
Name	White	NCS	Beech	Birch	Oak
DL80/2L 100%	821615	829615L	823615	825615	827615
DL80/3L 100%	821517	829517L	823517	825517	827517
HDÖ90	821831	829831L	823831	825831	827831
HDS90	821832	829832L	823832	825832	827832



HDÖ80 800x1057x570
HDS80 800x1057x570
HDL80/4L 100% 800x1057x570
HDL80/2L 100% 800x1057x570

Width 800 mm, Height 1057 mm, Depth 570 mm

Name	White	NCS	Beech	Birch	Oak
HDÖ80	821532	829532L	823532	825532	827532
HDS80	821533	829533L	823533	825533	827533
HDL80/4L 100%	821537	829537L	823537	825537	827537
HDL80/2L 100%	821534	829534L	823534	825534	827534



HDÖ90 898x1057x570
HDS90 898x1057x570

Width 898 mm, Height 1057 mm, Depth 570 mm

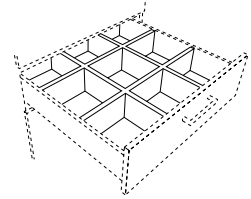
Name	White	NCS	Beech	Birch	Oak
DÖ90	821811	829811L	823811	825811	827811
DS90	821812	829812L	823812	825812	827812

Dimensions: Width x Height x Depth (height incl. plinth). **Frame:** 19 mm. **Front:** 16 mm. **Plinth:** 157 mm.
NCS refers to product lacquered in one optional NCS colour.

Accessories

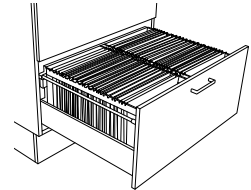
Insert for drawer, white

Name	Fits	Max load	Extension	Size/comp.	Art no.
Insert width 605, 100%, 9 compartments	605 mm	35 kg	100%	162x162	821012
Insert width 800, 100%, 9 compartments	800 mm	35 kg	100%	164x226	821014



Folder drawer, Depth 570 mm, 100 % extension, max 65 kg

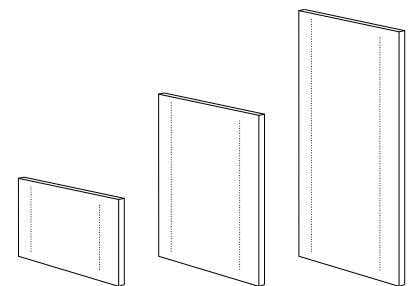
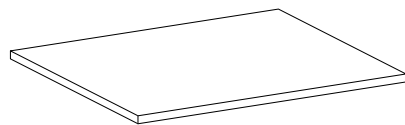
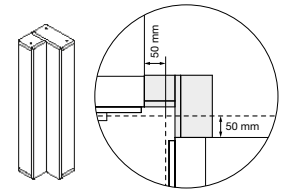
Name	White	NCS	Beech	Birch	Oak
Folder drawer ML60/570, 1xA4, 100%	831727	839727L	833727	835727	837727
Folder drawer ML80/570, 2xA4, 100%	831729	839729L	833729	835729	837729
Folder drawer Folio MLF60/570, 100%	831827	839827L	833827	835827	837827



Corner module, 100x880x100 mm

Name	White	NCS	Beech	Birch	Oak
Corner module	821010	829010L	823010	825010	827010

When the corner module is used – extend both worktops with 50 mm. Corner module is aligned with plinth.

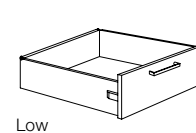


Shelves, Depth 570 mm (Width x Depth)

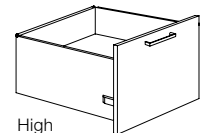
Name	White	NCS	Beech	Birch	Oak
30/570	821913	829913L	823913	825913	827913
60/570	821914	829914L	823914	825914	827914
80/570	821916	829916L	823916	825916	827916
90/570	821915	829915L	823915	825915	827915

Partition panel, fits width 605, 800 and 898 mm

Name	White	NCS	Beech	Birch	Oak
Partition panel 371	811913	819913L	813913	815913	817913
Partition panel 723	801912	809912L	803912	805912	807912
Partition panel 1075	801915	809915L	803915	805915	807915



Low



High

Cabinet locks (incl. 2 keys)

Name	Art no.
Cabinet locks, different lock numbers	830910
Addition, identical locks	830985

Drawer low, 100% expansion, Depth 570 mm (Max 35 kg/drawer)

Name	White	NCS	Beech	Birch	Oak
Low 30/570	831720	839720L	833720	835720	837720
Low 60/570	831721	839721L	833721	835721	837721
Low 80/570	831722	839722L	833722	835722	837722

Master key

Name	Lock type	Art no.
Master key	Cabinet locks	840913

Drawer high, 100% expansion, Depth 570 mm (Max 65 kg/drawer)

Name	White	NCS	Beech	Birch	Oak
High 60/570	831714	839714L	833714	835714	837714
High 80/570	831719	839719L	833719	835719	837719



Grip handles Edge, addition



Handles, standard

Grip handles Edge

Name	Size	Material	Art no.
Grip handles Edge*	40 mm	Stainless steel look	850322
Grip handles Edge*	40 mm	Black, brushed	850320
Grip handles Edge*	40 mm	White, laquered	850321

Handles, standard

Name	Size	Stainless steel look	Black	White
Handles*	c/c 128 mm	850304	850302	850303

* Stainless steel handles as standard, if you would like black or white please specify when ordering. If you would like other handles please contact TreCe.

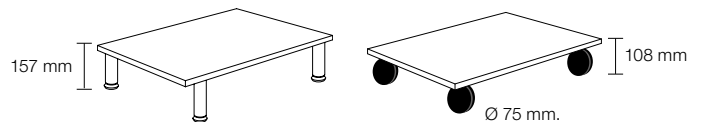
Leg set, Height 157 mm, Depth 370 mm (Incl. base plate)

Name	White	NCS	Beech	Birch	Oak
30/370	841936	879936L	843936	845936	877936
60/370	841937	879937L	843937	845937	877937
80/370	841940	879940L	843940	845940	877940

Knobs, standard

Name	Size	Stainless steel look	Black	White
Knob*	ø 19 mm	850313	850312	850314

* Stainless knobs as standard, if you would like black or white please specify when ordering. If you would like other handles please contact TreCe.



Stainless adjustable legs. If you would like other legs/wheels contact TreCe.

Load capacity per wheel: 100 kg
Material: black, rubber surface.
2 wheels have brakes.

Leg set, Height 157 mm, Depth 570 mm (Incl. base plate)

Name	White	NCS	Beech	Birch	Oak
30/570	841931	879931L	843931	845931	877931
60/570	841932	879932L	843932	845932	877932
80/570	841939	879939L	843939	845939	877939
90/570	841933	879933L	843933	845933	877933



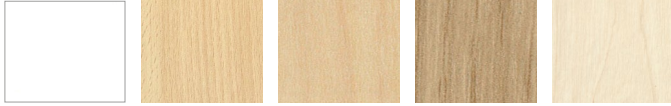
Wheel set, Height 108 mm, Depth 570 mm (Incl. base plate)

Name	White	NCS	Beech	Birch	Oak
30/570	841921	879921L	843921	845921	877921
60/570	841922	879922L	843922	845922	877922
80/570	841926	879926L	843926	845926	877926
90/570	841923	879923L	843923	845923	877923



If you would like other wheels, contact TreCe.

Worktops High pressure laminate, Formica Collection Colours and Woods, Pfleiderer Wood decors



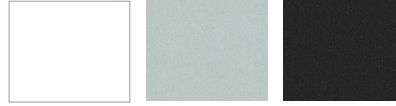
White (F1040) Beech (F2726) Birch (F7555) Oak (R20095) Ash (F1004)



Light grey (F7927) Grey (F7912) Anthracite (F2297) Black (F2253) Olive (F5343)

Name	Colour	Art no.
Laminate - 600 mm depth	White F1040	821001
Laminate - 600 mm depth	Beech F2726	822001
Laminate - 600 mm depth	Birch F7555	824101
Laminate - 600 mm depth	Oak R20095	826001
Laminate - 600 mm depth	Ash F1004	828071
Laminate - 600 mm depth	Light grey F7927	828011
Laminate - 600 mm depth	Grey F7912	828001
Laminate - 600 mm depth	Anthracite F2297	828031
Laminate - 600 mm depth	Black F2253	828021
Laminate - 600 mm depth	Olive F5343	828081

Worktops MFC laminate



White (6459BS) Light grey (U12188) Anthracite (U12011)

Name	Colour	Art no.
Worktop - 600 mm depth	White 6459BS	829001
Worktop - 600 mm depth	Light grey U12188	829101
Worktop - 600 mm depth	Anthracite U12011	829201

Specifications CombiLine

CombiLine

MFC laminated and lacquered surfaces within CombiLine have a chip core, with the exception of some shelves. Back, frame, doors and edge strips have the same colour/wood as other parts as standard, unless otherwise stated.

Frame

Thickness 19 mm, 0.8 mm straight ABS-lipping.

- MFC laminate white, beech, birch and oak.
- Lacquered available in any NCS-colour.

Back

Thickness 12 mm, laminate inside and outside.

Plinth

Every module has its own front and back plinth with 4 adjustable feet (does not apply to recycling units with loading ramps).

Plinth 157 mm. Can be replaced with;

- Bottom plate with adjustable stainless steel legs, height 157 mm.
- Bottom plate with lockable wheels, height 104 mm.

Doors

Thickness 16 mm, 2 mm straight ABS-lipping.

- White lacquered UV-treated MFC laminate (NCS S 0500-N), or MFC laminate in beech/birch/oak.
- Lacquered in any NCS colour.
- Self closing concealed hinges with integrated soft closing (does not apply to products with aximat hinges with 180° opening).
- Single doors are right-hung as standard.

Drawer fronts

Drawer front, low: 173 mm

Drawer front, high: 349 mm

Thickness 16 mm, 2 mm straight ABS-lipping.

- White lacquered UV treated MFC laminate (NCS 0500-N) and MFC laminate in beech/birch/ oak.
- Lacquered available in any NCS-colour.

Drawers

Drawers with depth 570 mm have soft closing.

- Extension 100%, max 35 kg (excl. recycling units).
- Extension 100%, max 65 kg.

Shelves

All shelves are adjustable and mounted with milled-in shelf support. Drill division c/c 32 mm.

- 312 – 605 mm have a chip core.
- 800 – 898 mm have a pine lamellar core.

Recycling unit

MDL60/MD60/MDH60/MD65/MD70

The bottom plate is equipped with an access ramp in stainless steel.

- Doors with aximat hinges for 180 degree opening for easy access to recycling containers.

Mail shelves

Adjustable with pull-out function and mounting strip, subdivision c/c 96 mm.

- Mail shelves in acrylic have integrated name slots.
- Mail shelves in powder coated steel white or black are available as an addition.

Steel doors mail sorting

White powder coated steel. Shelves inside in the same material as frame, 19 mm.

- Including lock and 2 keys with individual lock number.
- Inlet 22 mm. Open door gives a free space of 90 mm.

Wall modules

White lacquered mounting strip in steel is included for all wall modules.

Lock types

Cabinets locks, padlock fittings, code locks and RFID-locks (EM & Mifare). For network-based locks contact TreCe for individual advice.

Fitting pieces /Cover panels

Available as accessories in the same colour/material as frame. Width, height and depth adapted to your requirements.

Handles

Stainless steel bow handles as standard, if you would like black or white handles, please not on order.

- Standard handles c/c 128 mm.
- Grip handles 40 mm.

Work tops

High pressure laminate: 23 mm standard work-tops with high pressure laminate and 2 mm matching airtec-lipping.

- Formica Collection Colours
- Formica Collection Woods
- Pfleiderer Wood decors

MFC laminate: 22 mm standard worktops

have an outer paper layer coated with an impregnated paper and a finish of Aluminium particles for extra protection against wear. 2 mm matching airtec-lipping.

Airtec-lipping:

Airtec-lipping, also known as laser edging, provides an almost invisible joint between the worktop and edging strip. Thus provides a higher protection against water and heat. This new technology is glue-free, which results in a lower environmental impact.

Inserts: Powder-coated steel insert, available in white or black.

- Round with diameter 110, 250 or 400 mm.
- Square 250x250 mm or 350x350 mm.
- Slim 340x40 mm.

Lid for insert: Powder-coated steel. Available for round inserts with diameters 250 and 400 mm.

Inserts: Stainless steel, integrated ring in worktop

- Round 250 mm in diameter.

Lid for insert: Compact laminate, folded in / integrated into ring, thickness 6 mm

- Round 250 mm in diameter with knob.
- Compact laminate, Formica F2297 (anthracite) alt. F1040 (white).

General info

Mounting

All modules are factory mounted. Worktops/ Cover panels/Top covers are mounted on site.

Warranty

We provide a 5 year factory warranty on CombiLine. Other products, contact TreCe.

Cabinet locks

Robust cabinet locks with master key system, individual numbers with 2 keys as standard. Identical locks available to addition.

Contact TreCe for customization of selected product.

QUICK INFO.

Content	Certification TreCe	Certification TreCe
Environmental, quality & social aspects	ISO 9001:2015	ISO 14001:2015
Country of production	Certification Product	Approved user environments
Sweden	Möbelfakta	Offices, public spaces & schools



SVHC/ECHA's candidate list

No chemicals included in ECHA's candidate list of SVHC may be contained in levels of >0.1% by weight in the components, parts or chemicals that are included or used in the manufacturing of the furniture/product. See <http://echa.europa.eu/en/candidate-list-table>

Wood

Routines must be in place to ensure that wood based materials are traceable and come from legal and acceptable sources, see table 1. Particleboards in white, beech, birch and oak meet the requirements.

Table 1: Requirements wood

Requirements	Complies
Has legal ownership and access rights	X
Follows nationally and locally applicable laws and regulations regarding use, environment, labour and welfare, health and safety, and other parties' rights.	X
Pays the relevant taxes and charges related to use.	X
Follows CITES regulations (only applicable to certain tree species, see the CITES website).	X
The wood complies with the requirements for formaldehyde emission requirements according to E1.	X

Metal

Fittings such as hinges, screws and handles for-fill the requirements in table 2.

Table 2: Requirements metal

Requirements	Complies
Metal that will have prolonged contact with skin (e.g. armrests) must not consist of alloys containing nickel, chromium III or chromium VI.	X

Adhesives

Adhesives used in manufacturing meet the requirements of table 3 which limit the use of environmentally and health hazardous volatile organic solvents (VOCs) and hazardous formaldehyde.

Table 3: Requirements adhesives

Requirements	Complies
Adhesives used in the manufacture of furniture or components for furniture may contain a maximum of 10% by weight VOC.	X
Adhesives used in the manufacture of furniture or components for furniture may contain a maximum of 0.2% by weight of free formaldehyde.	X

Sustainability

Plastic

Plastic parts such as edgings, fittings and post shelves meet the requirements in table 4. For example, the post shelf is marked according to ISO 11469 with a stamp. The stamp shows the type of plastic and thus makes it possible to recycle and reuse the material.

Table 4: Requirements plastic

Requirements	Complies
Plastic parts >50 grams are permanently marked according to ISO 11469	X
Free from PVC (polyvinyl chloride)	X
Softeners/phthalates classified as hazard classification H360 have not been actively added or that the measured level does not exceed 0.1% by weight/substance and component.	X
Short-chain chlorinated paraffins (SCCPs) must not be actively added or that the measured level must not exceed 0.01% by weight/substance and component.	X
The following flame retardants have not been actively added or that the measured level does not exceed 0.1% by weight/substance and component.	X
Polybrominated biphenyls (PBBs) CAS-nr: 59536-65-1	
Decabromodiphenyl ether (dekaBDE) CAS-nr: 1163-19-5	
Pentabromodiphenylether (pentaBDE) CAS-nr: 32534-81-9	
Oktabromdiphenylether (oktaBDE) CAS-nr: 32536-52-0	
Tris (2,3-dibrompropyl) phosphate (TBPP) CAS-nr: 126-72-7	
Tris (1-aziridinyl) phosphine oxide (TEPA) CAS-nr: 5455-55-1	
Hexabromocyclododecane (HBCDD) CAS-nr: 25637-99-4	
Tris (2 chloroethyl) phosphate (TCEP) CAS-nr: 115-96-8	
No pigments containing lead, cadmium, tin, chromium VI or mercury have not been actively added or that the measured level does not exceed 0.01% by weight per component.	X

Surface treatment – white

Doors and fronts are UV-lacquered in white and meet the requirements stated in Tables 5 and 6.

Safety data sheets according to REACH CLP-regulation no1272/2008 are sent on request.

Direct laminate products in beech, birch and oak are not surface treated.

Table 5: Requirements surface treatment

Requirements	Complies
The content of aromatic solvents / hydrocarbons in surface treatment products / preparations may not exceed 1.0% by weight.	X
Surface treatment with preparations containing VOC may have a maximum applied VOC component of 60 g / m ² for office / public / outdoor environment.	X

Table 6: Hazard class and hazard statement according to Regulation 1272/2008

Hazard category	Hazard statement according to regulation 1272/2008	Complies
Acute toxicity	H300, H301, H310, H311, H330, H331	X
Toxic to body organs	H370, H371, H372, H373	X
Carcinogenic	H350, H351	X
Mutagenic	H340, H341	X
Toxic for reproduction	H360, H361, H362	X
Allergenic	H334	X
Dangerous to the environment	H400, H410, H411, H412, H413 If the use of surface treatment products is required for technical reasons, products labelled as dangerous to the environment (H400, H410, H411, H412, H413) may be acceptable if the content of environmentally hazardous substance <14 g/per m ² of surface.	X
Hazardous to the ozone layer	H420	X

The production

CombiLine is manufactured and assembled in Sweden. Environmental aspects related to production are presented in table 7.

Table 7: The environmental aspects of production.

Environmental aspect	
Environmentally classified materials / chemicals	Particularly hazardous chemicals, phasing out substances or priority risk reduction substances are not used. Handling and storage of all chemicals and substances are regulated so emissions to air, ground or water do not occur.
Surface coating	During the surface coating the production works actively to minimise the environmental impact through special handling and environmentally adapted colors and solvents. For example excess paint is collected and reused.
Emissions air	Emissions below the set license conditions. An air filter cleaner is installed that recycles tempered air which saves energy and reduces emissions to the outdoor environment.
Emissions water	Emissions below the set license conditions. Substances that are discharged into wastewater are environmentally friendly and contain no chemicals that the treatment plants cannot handle. Adhesives and varnishes that according to the safety data sheet are considered to pose a risk when released into water are collected in sealed containers and classified and treated as dangerous waste.
Waste	Residual material from particleboard is baled and collected for combustion in order to extract energy. TreCe is connected to the Packaging and Newspaper Collection (FTI). Waste is sorted according to the regulations that are based on the FTI and current legislation. Waste and residual products such as glue and oil residues are handled and collected separately.
Energy	In order to minimise energy consumption, heating is regulated based on working hours and which workstations are staffed. Investment in a compressor for a sustainable use of electricity resulted in an energy reduction of about 110,000 kWh/year.
Production optimization	The production process is optimised to save on materials, resulting in a reduced amount of waste, and to minimise energy consumption.
Energy per product	The energy consumption in electricity per product is 8.8 kWh.

The product

Environmental aspects linked to the product in addition to the materials are presented in table 8.

Table 8: The products aspects

Aspect	
Packaging	Stretch film and corrugated board used to pack TreCe products are free of chlorine and bleach. The box is glued with wheat or cornstarch.
Reuse and restoration	One of our core values is Smart design. This means, among other things, that we look at design from a wider perspective. TreCe products are long lasting. Instead of replacing the whole piece of furniture, there is the option of replacing only a few parts. In this way, our products become sustainable in the long term — a benefit for both you as a user and for the environment.
Lifetime and warranty	TreCe provides a 5-year warranty on the entire range and spare parts are available for 10 years. The estimated usage life is from 5 years up to 30 years, depending on the area of use.
Recycling	Material recycling leads to a reduction in virgin material extraction and thus reduces carbon dioxide emissions. Hinges and fittings can be melted down and wood-based materials can be recycled for the production of new chipboard which is almost as high quality as virgin. The materials are submitted to recycling facilities, contact your municipality for more information. CombiLine is designed so that the different materials can be separated without special tools. When dismantling, no environmentally hazardous emissions occur.

Social responsibility

We have ensured that this product is manufactured under good conditions, ie. with regard to social and ethical issues such as working conditions, human rights, labour, environment and corruption. We have sent these requirements to our suppliers and subcontractors, who have each certified that they are followed. A summary is shown in Table 9 and applies to the entire manufacture process of a product and it's components. The starting point is the UN guidelines on the "Code of Conduct" and Möbelfakta's requirements for Social Responsibility are formulated on the basis of the UN's Global Compact. As well as conditions for social and ethical considerations regarding tax irregularities and illegal labour. The principles are based on below;

- UN Universal Declaration of Human Rights
- Rio Declaration on Environment and Development
- International Labour Organization (ILO) eight core conventions on human and labour rights
- UN Convention against Corruption
- Work environment requirements based on ILO conventions on health and safety

Table 9: Summary requirements for social responsibility

Requirements		Complies
Legislation	The furniture and its components must be manufactured in accordance with national legislation.	X
Human Rights	Producers, manufacturers and suppliers operations must comply with human rights.	X
Working conditions	Wages, child labour, conditions of employment, working hours, benefits, penalties, freedom of association, forced labour and discrimination.	X
Working environment	The company must constantly strive to improve the working environment and workplace safety for its employees.	X
Environment	Identify environmental impact, work actively with environmental issues and involve staff. Procedures for law compliance must be in place and followed up.	X
Anti-corruption	No form of extortion, corruption, bribery or favoritism to or from employees or organizations is tolerated.	X
Tax irregularities /fraud	In addition to the statutory obligations applicable to the employees concerned, shall also anti-labour and tax fraud are applied, such as illegal workers.	X
Undeclared/illegal labour	No undeclared/illegal labour shall be hired to preform product manufacturing.	X

Quality

This product has undergone extensive quality tests for safety and function, as well as surface resistance. The criteria and standards apply to the public environment, school environment and office environment and are shown in Tables 10 and 11. The tests were conducted by RISE, a Swedish government research institute that performs testing and certification.

Table 10: Approved user environments

Product	Approved user environments	Complies
CombiLine-products with Möbelfakta label	Public environment	X
	School environment	X
	Office environment	X

Table 11: Standards against which the product has been tested and approved

Standard	Scope	Complies
SS-EN 14073-2:2004	Office furniture — Storage furniture — Part 2: Safety requirements	X
SS-EN 16121:2013 + A1:2018	Non-domestic storage furniture — Requirements for safety, strength, durability and stability	X
SS-EN 12720:2009 + A1:2013	Surface resistance	X
SS 839117	Public environment / office	X