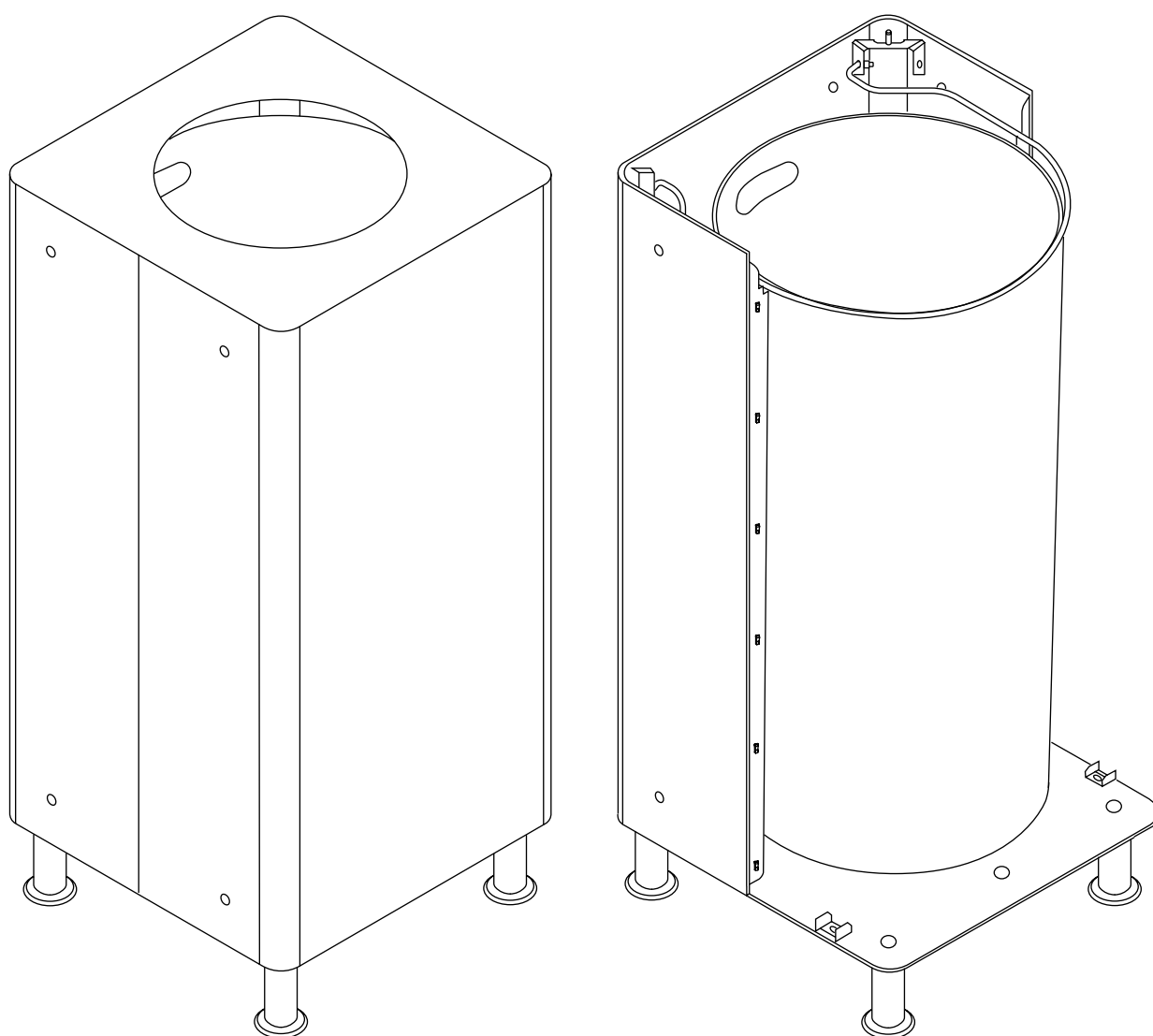
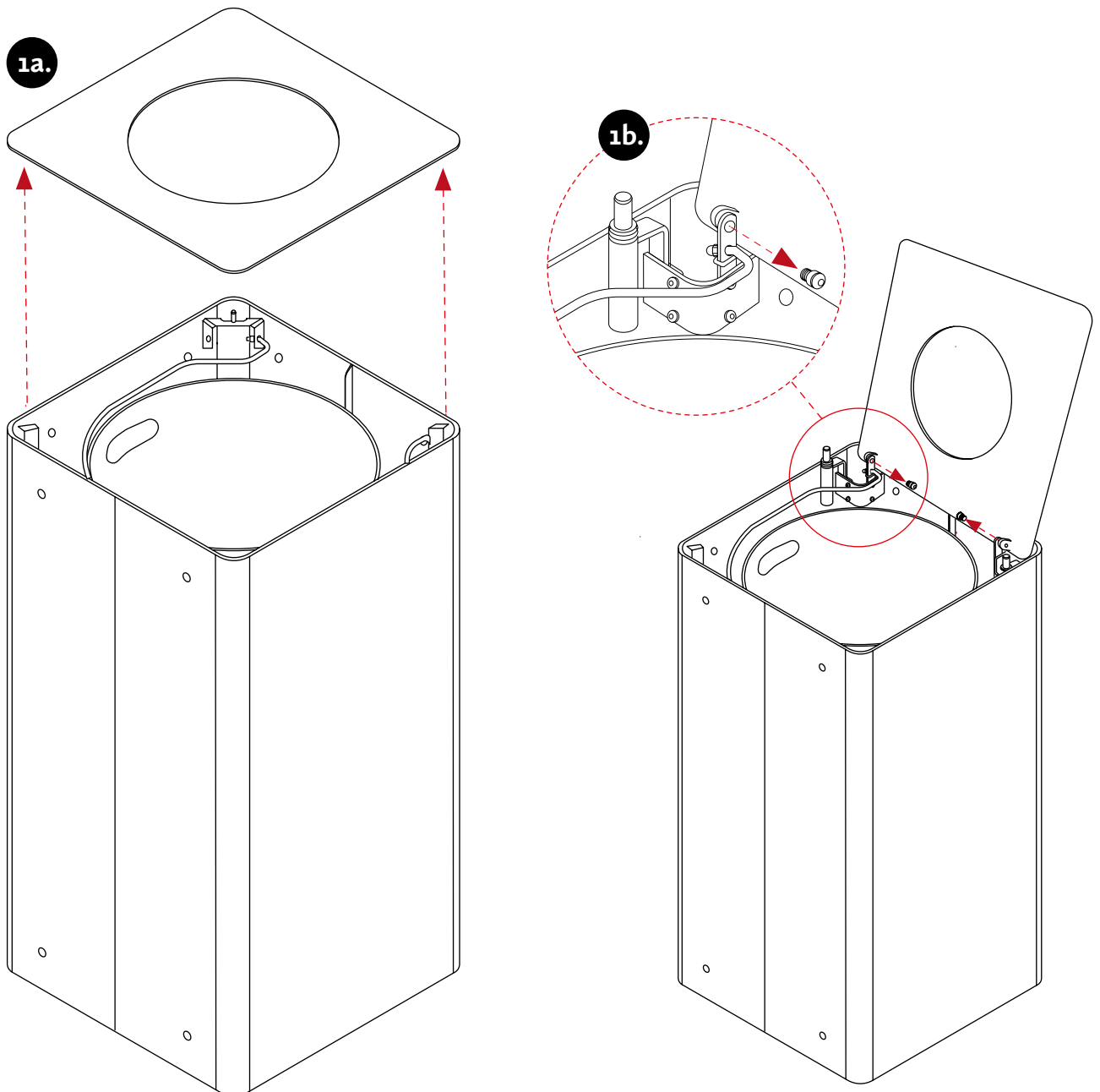


KLOSS

DISASSEMBLY INSTRUCTIONS



KLOSS M1*

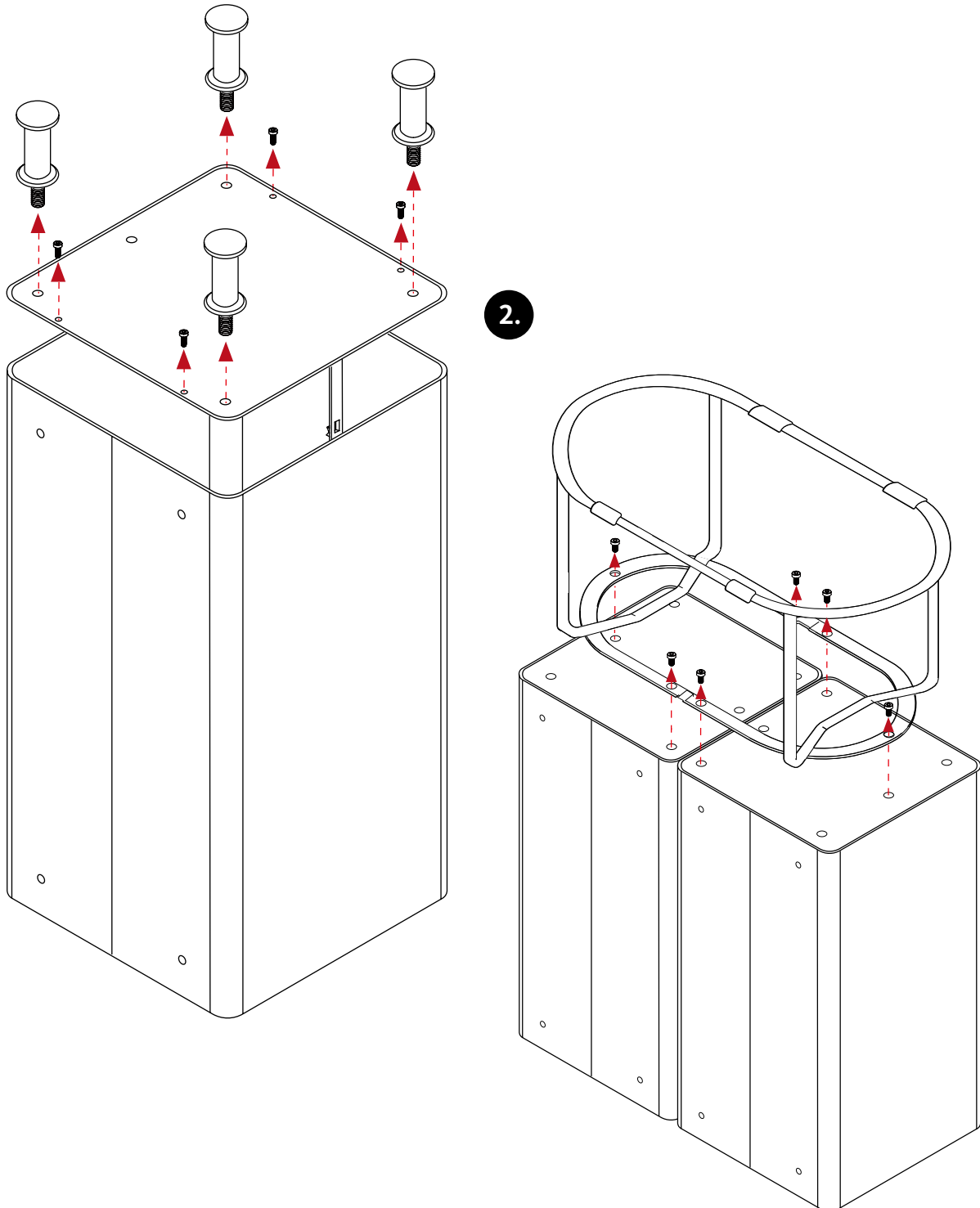


1a. First disassemble the frames if they are joined together, see the KLOSS mounting description. Lift off the top, and lift out the container.

1b. Unscrew the fixed top on the Small and Mini. Lift off the top, and lift out the container.

*** The same principle applies to M2 and M3**

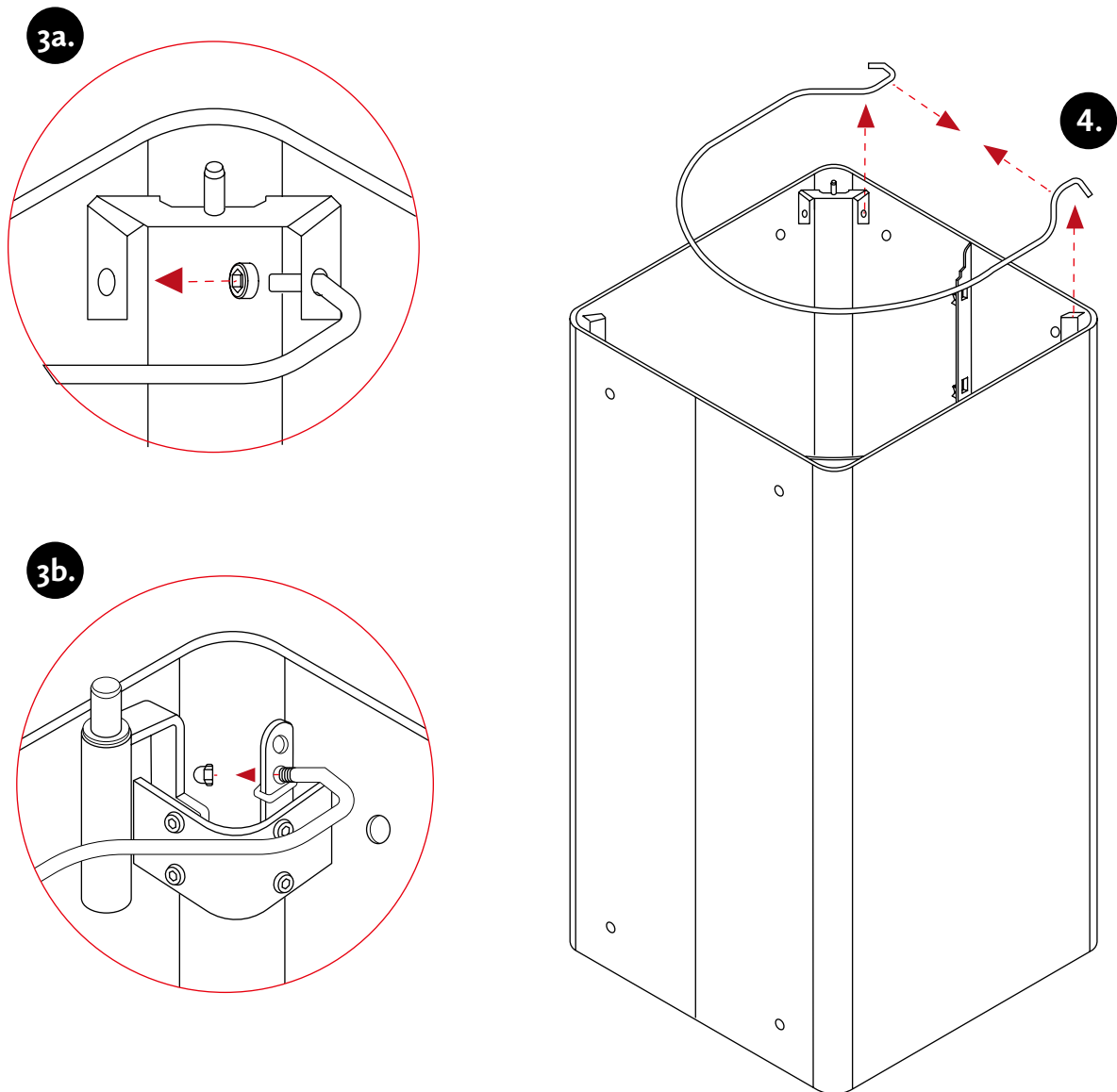
KLOSS M1*



2. Turn the frame upside down and unscrew any legs or wheels.
Unscrew the mounting screws that attach the bottom plate to the frame.

*** The same principle applies to M2 and M3**

KLOSS M1*



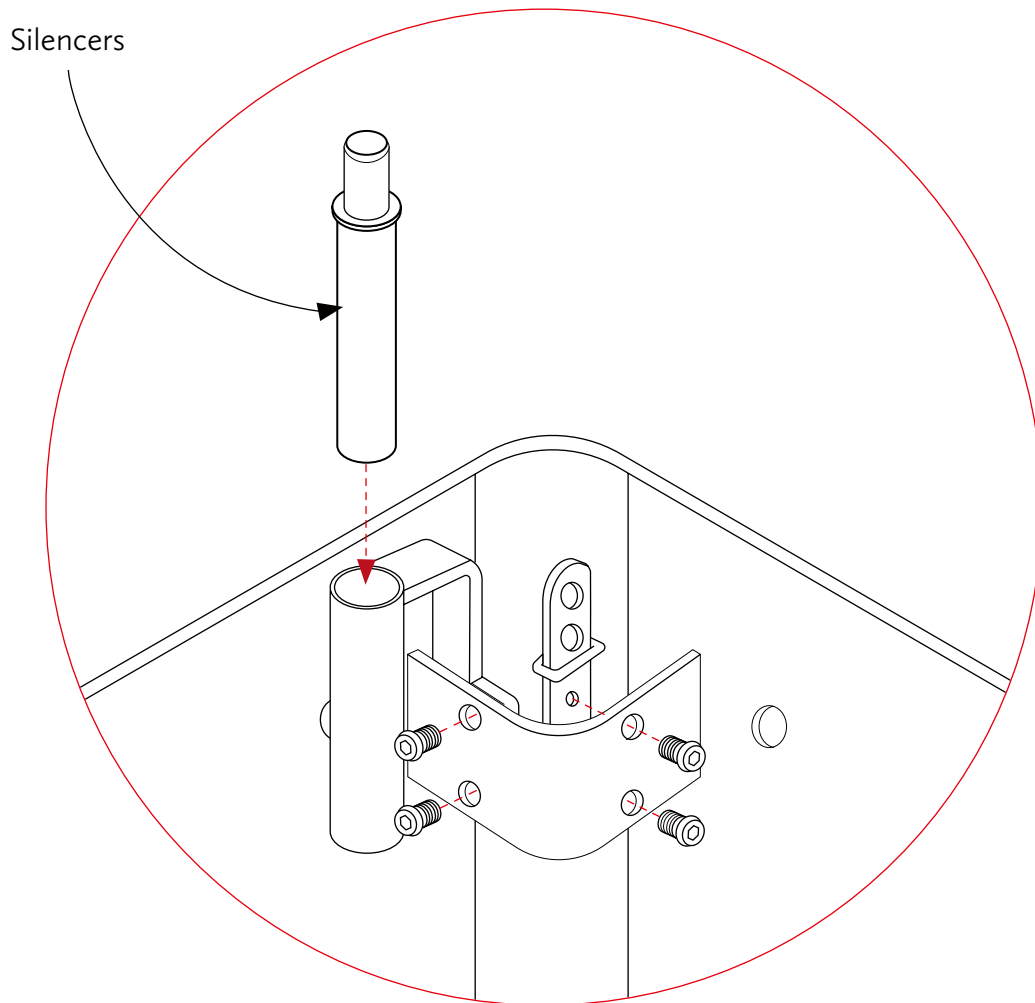
3a. Unscrew the nut on one side of the bag holder.

3b. On Mini and Small; unscrew the nut on both ends of the bag holder.
Also unscrew the damper arm.

4. Then press the bag holder together so that it can be released from the bracket.

*** The same principle applies to M2 and M3**

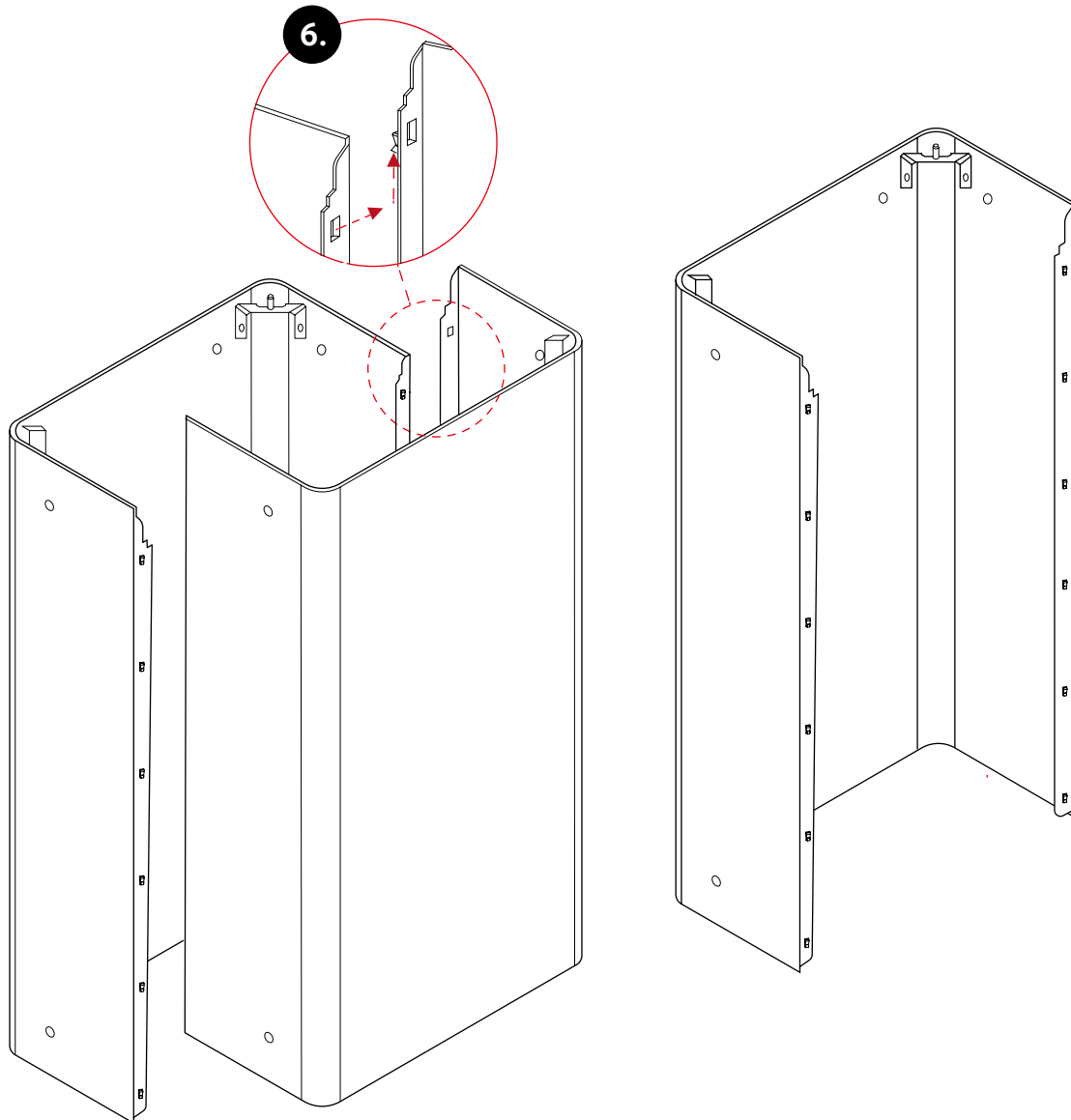
KLOSS SMALL & MINI *



5. Remove the silencer. Then unscrew the fastening arm for the bag holder and the damper. Repeat for more.

* The same principle applies to Small & Mini M2 and M3

KLOSS M1*



- 6.** To split the frame, unhook the hooks by moving one part of the frame upwards.
If it gets stuck, try unfolding the upper hook a little.
Repeat all the above steps in reverse for assembly.

*** The same principle applies to M2 and M3**

KLOSS

