

CombiLine

Cabinet

Design | TreCe



Combination of 4 cabinets with width 605 mm, white worktop (F1040) with black liping strip and black grip handles (40 mm).



Drawer holds 30 kg with 70% expansion.

Space efficient cabinets that utilize all the office space. Stainless steel handles included as standard.

Create your own combination. Choose between different modules, open, with doors or with drawers. Available in two different standard heights 880 and 1057 mm. Space efficient cabinets that utilize all of the offices quadratic and cubic meters. Available as standard version in white, or choose freely among all NCS colors or beech, birch and oak. Standard widths: 310 mm, 605 mm, 800 mm and 900 mm.

CombiLine Cabinet

Frame: 19 mm.

Front: 16 mm.

Plinth height: 157 mm.

NCS refers to product lacquered in one optional NCS color.



Drawer holds 30 kg with 100% expansion.

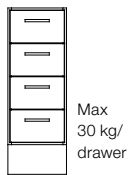


Folder drawer 2x A4.

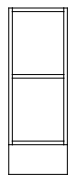


Drawer inserts.

CombiLine Cabinet



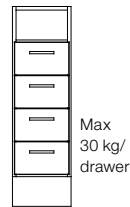
DL30/4L
310x880x570



DÖ30
310x 880x570



DS30
310x880x570



HDL30/4L
310x1057x570



HDÖ30
310x1057x570



HDS30
310x1057x570

Width 310 mm, Height 880 mm, Depth 570 mm

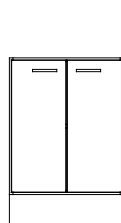
Name	White	NCS	Beech	Birch	Oak
DL30/4L	821611	829611L	823611	825611	827611
DÖ30	821612	829612L	823612	825612	827612
DS30	821613	829613L	823613	825613	827613

Width 310 mm, Height 1057 mm, Depth 570 mm

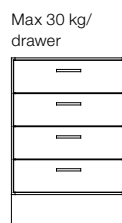
Name	White	NCS	Beech	Birch	Oak
HDL30/4L	821631	829631L	823631	825631	827631
HDÖ30	821632	829632L	823632	825632	827632
HDS30	821633	829633L	823633	825633	827633



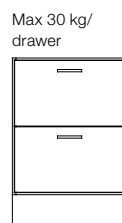
DÖ60
605x880x570



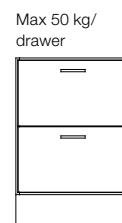
DS60
605x880x570



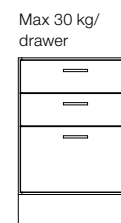
DL60/4L
605x880x570



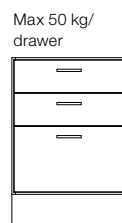
DL60/2L-30
605x880x570



DL60/2L-50
605x880x570



DL60/3L-30
605x880x570



DL60/3L-50
605x880x570

Width 605 mm, Height 880 mm, Depth 570 mm

Name	White	NCS	Beech	Birch	Oak
DÖ60	821712	829712L	823712	825712	827712
DS60	821713	829713L	823713	825713	827713
DL60/4L	821711	829711L	823711	825711	827711

Name	White	NCS	Beech	Birch	Oak
DL60/2L-30	821714	829714L	823714	825714	827714
DL60/2L-50	821814	829814L	823814	825814	827814
DL60/3L-30	821715	829715L	823715	825715	827715
DL60/3L-50	821815	829815L	823815	825815	827815

CombiLine Cabinet

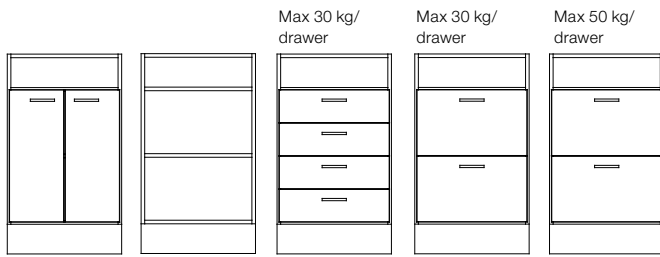
Frame: 19 mm.

Front: 16 mm.

Plinth height: 157 mm.

NCS refers to product lacquered in one optional NCS color.

CombiLine Cabinet



HDS60 605x1057x570
HDÖ60 605x1057x570
HDL60/4L 605x1057x570
HDL60/2L-30 605x1057x570
HDL60/2L-50 605x1057x570

Max 30 kg/
drawer

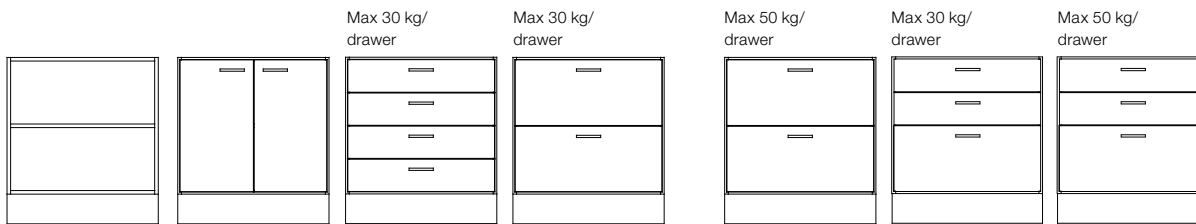
Max 30 kg/
drawer

Max 50 kg/
drawer

Stainless steel handles are standard. If you'd prefer black or white, please let us know when ordering. Legs, wheels and drawers can be found on page 102–103 in our catalog. Worktops on page 98.

Width 605 mm, Height 1057 mm, Depth 570 mm

Name	White	NCS	Beech	Birch	Oak
HDS60	821733	829733L	823733	825733	827733
HDÖ60	821732	829732L	823732	825732	827732
HDL60/4L	821731	829731L	823731	825731	827731
HDL60/2L-30	821734	829734L	823734	825734	827734
HDL60/2L-50	821834	829834L	823834	825834	827834



DÖ80 800x880x570
DS80 800x880x570
DL80/4L 800x880x570
DL80/2L-30 800x880x570
DL80/2L-50 800x880x570
DL80/3L-30 800x880x570
DL80/3L-50 605x880x570

Max 30 kg/
drawer

Max 30 kg/
drawer

Max 50 kg/
drawer

Max 30 kg/
drawer

Max 50 kg/
drawer

Width 800 mm, Height 1057 mm, Depth 570 mm

Name	White	NCS	Beech	Birch	Oak
DÖ80	821512	829512L	823512	825512	827512
DS80	821513	829513L	823513	825513	827513
DL80/4L	821514	829514L	823514	825514	827514
DL80/2L-30	821515	829515L	823515	825515	827515

Name	White	NCS	Beech	Birch	Oak
DL80/2L-50	821615	829615L	823615	825615	827615
DL80/3L-30	821516	829516L	823516	825516	827516
DL80/3L-50	821517	829517L	823517	85517	827517

CombiLine Cabinet

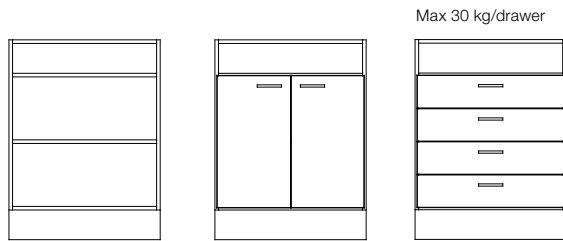
Frame: 19 mm.

Front: 16 mm.

Plinth height: 157 mm.

NCS refers to product lacquered in one optional NCS color.

CombiLine Cabinet

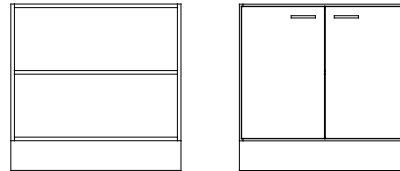


Max 30 kg/drawer

HDÖ80
800x1057x570

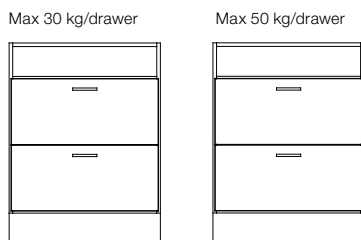
HDS80
800x1057x570

HDL80/4L
800x1057x570



DÖ90
900x880x570

DS90
900x880x570

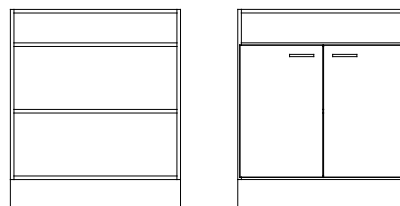


Max 30 kg/drawer

Max 50 kg/drawer

HDL80/2L-30
800x1057x570

HDL80/2L-50
800x1057x570



HDÖ90
900x1057x570

HDS90
900x1057x570

Width 800 mm, Height 1057 mm, Depth 570 mm

Name	White	NCS	Beech	Birch	Oak
HDÖ80	821532	829532L	823532	825532	827532
HDS80	821533	829533L	823533	825533	827533
HDL80/4L	821535	829535L	823535	825535	827535
HDL80/2L-30	821536	829536L	823536	825536	827536
HDL80/2L-50	821534	829534L	823534	825534	827534

Width 900 mm, Height 880 mm, Depth 570 mm

Name	White	NCS	Beech	Birch	Oak
DÖ90	821811	829811L	823811	825811	827811
DS90	821812	829812L	823812	825812	827812

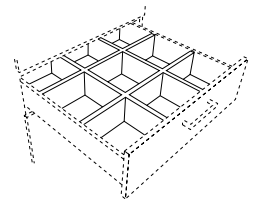
Width 900 mm, Height 1057 mm, Depth 570 mm

Name	White	NCS	Beech	Birch	Oak
HDÖ90	821831	829831L	823831	825831	827831
HDS90	821832	829832L	823832	825832	827832

Accessories

Insert for drawer, white

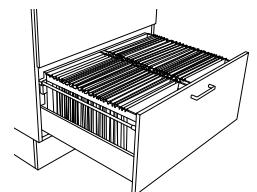
Name	Fits	Max load	Expans.	Size/box	Art nr
Insert 60/9 boxes	600 mm	30 kg	70 %	164x165	821011
Insert 80/9 boxes	800 mm	30 kg	70 %	164x230	821013
Insert 60/9 boxes	600 mm	35 kg	100 %	162x162	821012
Insert 80/9 boxes	800 mm	35 kg	100 %	164x226	821014



Folder drawer, depth 570 mm, 100% expansion, max 50 kg

Name	White	NCS	Beech	Birch	Oak
ML60/570 1x A4 600mm	831727	839727L	833727	835727	837727
ML80/570 2x A4 800mm	831729	839729L	833729	835729	837729
MLF60/570 folio folders mail 600mm	831827	839827L	833827	835827	837827

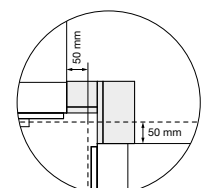
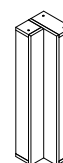
Accessories folio folders see page 102.



Corner module, 100x880x100 mm

Name	White	NCS	Beech	Birch	Oak
Corner module	821010	829010L	823010	825010	827010

When the corner module is used – extend both worktops with 50 mm. Corner module is aligned with plinth.



CombiLine

MFC laminated and lacquered surfaces within CombiLine have a chip core, with the exception of some shelves. Back, frame, doors and edge strips have the same color/wood as other parts as standard, unless otherwise stated.

Frame

Thickness 19 mm, 0.8 mm straight ABS-lipping.

- MFC laminate white, beech, birch and oak.
- Lacquered available in any NCS-color.

Back

Thickness 12 mm, laminate inside and outside.

Plinth

Every module has its own front and back plinth with 4 adjustable feet (does not apply to recycling units with loading ramps).

Plinth height 157 mm. Can be replaced with;

- Bottom plate with adjustable stainless steel legs, height 157 mm.
- Bottom plate with lockable wheels, height 104 mm.

Doors

Thickness 16 mm, 2 mm straight ABS-lipping.

- White lacquered UV-treated MFC laminate (NCS S 0500-N), or MFC laminate in beech/birch/oak.
- Lacquered in any NCS color.
- Self closing concealed hinges with integrated soft closing (does not apply to products with aximat hinges with 180° opening).
- Single doors are right-hung as standard.

Drawer fronts

Thickness 16 mm, 2 mm straight ABS-lipping.

- White lacquered UV treated MFC laminate (NCS 0500-N) and MFC laminate in beech/birch/ oak.
- Lacquered available in any NCS-color.

Drawers

Drawers with depth 570 mm have soft closing.

- Extension 70%, max 30 kg.
- Extension 100%, max 35 kg (excl. recycling units).
- Extension 100%, max 50 kg.

Shelves

All shelves are adjustable and mounted with milled-in shelf support.

Drill division c/c 32 mm.

- 310 – 605 mm have a chip core.
- 800 – 900 mm have a pine lamellar core.

Recycling unit

MDL60/MD60/MDH60/MD65/MD70

The bottom plate is equipped with an access ramp in stainless steel.

- Doors with aximat hinges for 180 degree opening for easy access to recycling containers.

Mail shelves

Adjustable with pull-out function and mounting strip, subdivision c/c 96 mm.

- Mail shelves in acrylic have integrated name slots.
- Mail shelves in powder coated steel white or black are available as an addition.

Steel doors mail sorting

White powder coated steel. Shelves inside in the same material as frame, 19 mm.

- Including lock and 2 keys with individual lock number.
- Inlet 22 mm. Open door gives a free space of 90 mm.

Wall modules

White lacquered mounting strip in steel is included for all wall modules.

Lock types

Cabinets locks, padlock fittings, code locks and RFID-locks (EM & Mifare).

Fitting pieces /Cover panels

Available as accessories in the same color/material as frame. Width, height and depth adapted to your requirements.

Handles

Stainless steel bow handles as standard, if you would like black or white handles, please not on order.

- Standard handles c/c 128 mm.
- Grip handles 40 mm.

General info

Mounting

All modules are factory mounted Worktops/Cover panels/Top covers are mounted on site.

Warranty

We provide a 5 year factory warranty on CombiLine. Other products, contact TreCe.

Cabinet locks

Robust cabinet locks with master key system, individual nr. with 2 keys as standard. Identical locks available to addition.

Contact TreCe for customization of selected product.

The production

CombiLine is manufactured and assembled in Sweden. Environmental aspects related to production are presented in Table 7.

Table 7: The environmental aspects of production.

Environmental aspect

Environmentally classified materials / chemicals	Particularly hazardous chemicals, phasing out substances or priority risk reduction substances are not used. Handling and storage of all chemicals and substances are regulated so emissions to air, ground or water do not occur.
Surface coating	During the surface coating the production works actively to minimize the environmental impact through special handling and environmentally adapted colors and solvents. For example excess paint is collected and reused.
Emissions air	Emissions below the set license conditions. An air filter cleaner is installed that recycles tempered air which saves energy and reduces emissions to the outdoor environment.
Emissions water	Emissions below the set license conditions. Substances that are discharged into wastewater are environmentally friendly and contain no chemicals that the treatment plants cannot handle. Adhesives and varnishes that according to the safety data sheet are considered to pose a risk when released into water are collected in sealed containers and classified and treated as dangerous waste.
Waste	Residual material from particleboard is baled and collected for combustion in order to extract energy. TreCe is connected to the Packaging and Newspaper Collection (FTI). Waste is sorted according to the regulations that are based on the FTI and current legislation. Waste and residual products such as glue and oil residues are handled and collected separately.
Energy	In order to minimize energy consumption, heating is regulated based on working hours and which workstations are staffed. Investment in a compressor for a sustainable use of electricity resulted in an energy reduction of about 110,000 kWh/year.
Production optimization	The production process is optimized to save on materials, resulting in a reduced amount of waste, and to minimize energy consumption.
Energy per product	The energy consumption in electricity per product is 8.8 kWh.

The product

Environmental aspects linked to the product in addition to the materials are presented in Table 8.

Table 8: The products aspects.

Aspect

Packaging	Stretch film and corrugated board used to pack TreCe products are free of chlorine and bleach. The box is glued with wheat or cornstarch.
Reuse and restoration	One of our core values is Smart design. This means, among other things, that we look at design from a wider perspective. TreCe products are long lasting. Instead of replacing the whole piece of furniture, there is the option of replacing only a few parts. In this way, our products become sustainable in the long term - a benefit for both you as a user and for the environment.
Lifetime and warranty	TreCe provides a 5-year warranty on the entire range and spare parts are available for 10 years. The estimated usage life is from 5 years up to 30 years, depending on the area of use.
Recycling	Material recycling leads to a reduction in virgin material extraction and thus reduces carbon dioxide emissions. Hinges and fittings can be melted down and wood-based materials can be recycled for the production of new chipboard which is almost as high quality as virgin. The materials are submitted to recycling facilities, contact your municipality for more information. CombiLine is designed so that the different materials can be separated without special tools. When dismantling, no environmentally hazardous emissions occur.

Social responsibility

We have ensured that this product is manufactured under good conditions, ie. with regard to social and ethical issues such as working conditions, human rights, labor, environment and corruption. We have sent these requirements to our suppliers and subcontractors, who have each certified that they are followed. A summary is shown in Table 9 and applies to the entire manufacture process of a product and it's components.

The minimum requirement for all suppliers is the UN guidelines on the "Code of Conduct" and Möbelfaktas' requirements for Social responsibility, which are formulated from the UN Global Compact with principles based on below;

- UN Universal Declaration of Human Rights.
- Rio Declaration on Environment and Development.
- International Labor Organization (ILO) eight core conventions on human and labor rights.
- UN Convention against Corruption.
- Work environment requirements based on ILO conventions on health and safety

Table 9: Requirements for social responsibility.

Requirements		Complies
Legislation	The furniture and its components must be manufactured in accordance with national legislation.	X
Human Rights	Producers, manufacturers and suppliers operations must comply with human rights.	X
Working conditions	Wages, child labor, conditions of employment, working hours, benefits, penalties, freedom of association, forced labor and discrimination.	X
Working environment	The company must constantly strive to improve the working environment and workplace safety for its employees.	X
Environment	Identify environmental impact, work actively with environmental issues and involve staff. Procedures for law compliance must be in place and followed up.	X
Anti-corruption	No form of extortion, corruption, bribery or favoritism to or from employees or organizations is tolerated.	X

Quality

This product has undergone extensive quality tests for safety and function, as well as surface resistance. The criteria and standards apply to the public environment, school environment and office environment and are shown in Tables 10 and 11. The tests were conducted by RISE, a Swedish government research institute that performs testing and certification.

Table 10: Approved user environments.

Product	Approved user environments.	Complies
CombiLine-products with Möbelfakta label	Public environment	X
	School environment	X
	Office Environment	X

Table 11: Standards against which the product has been tested and approved.

Standard	Scope	Complies
SS-EN 14073-2:2004	Office furniture - Storage furniture - Part 2: Safety requirements	X
SS-EN 16121:2013 + A1:2018	Non-domestic storage furniture - Requirements for safety, strength, durability and stability	X
SS-EN 12720:2009 + A1:2013 SS 839117	Surface resistance Public environment / office Requirements Category 1	X